



# Manual



## **1. System analysis**

## **2. Extended**

## **3. Automatic**

- [3.1 Live-Tuner](#)
- [3.2 Auto-Clean](#)
- [3.3 Profile Booster](#)

## **4. Clean / Optimize / Inform**

- [4.1 Clean](#)
- [4.2 Optimize](#)
- [4.3 Inform](#)

## **5. All modules**

- [5.1 Basic handling](#)
  - [5.1.1 More functions](#)

## **6. Maintain system**

- [6.1 One Click Optimizer](#)
- [6.2 Drive Cleaner](#)
  - [6.2.1 Managing exceptions](#)
- [6.3 Registry Optimizer](#)
  - [6.3.1 Managing exceptions](#)
- [6.4 Internet Cleaner](#)
- [6.5 Privacy Traces Cleaner](#)
- [6.6 Defrag](#)
- [6.7 Registry Defrag](#)

## **7. Improve performance**

- [7.1 Service Manager](#)
- [7.2 Boot Center](#)
- [7.3 Internet Tuner](#)
- [7.4 Process Manager](#)
- [7.5 Uninstall Manager 2](#)
- [7.6 SSD Wizard](#)

## **8. Customize Windows**

- [8.1 Tweaking](#)
- [8.2 Privacy Manager](#)
- [8.3 File Associator](#)
- [8.4 Context Menu Manager](#)

## [8.5 Browser Extension Manager](#)

## [8.6 Firewall Manager](#)

## **9. Analyze system**

- [9.1 System Information](#)
- [9.2 DiskSpace Explorer](#)
- [9.3 Benchmark Center](#)
- [9.4 HDD Inspector](#)
- [9.5 Crash Analyzer](#)
- [9.6 Font Manager](#)

## **10. File tools**

- [10.1 File Wiper](#)
- [10.2 File Manipulator](#)
- [10.3 Undeleter](#)
- [10.4 Link Checker](#)
- [10.5 Duplicate Finder](#)
- [10.6 ADS scanner](#)

## **11. Administrative tools**

- [11.1 Tuning Assistant](#)
- [11.2 System Restore Manager](#)
- [11.3 Icon Saver](#)
- [11.4 User-Rights Manager](#)
- [11.5 Energy Manager](#)
- [11.6 Task scheduler](#)
- [11.7 Statistics](#)

## **12. Backups**

## **13. Settings**

- [13.1 Basic functions](#)
- [13.2 One Click Optimizer](#)
- [13.3 Drive Cleaner](#)
- [13.4 Registry Optimizer](#)
- [13.5 Internet Cleaner](#)
- [13.6 Defrag](#)
- [13.7 File Associator](#)
- [13.8 DiskSpace Explorer](#)
- [13.9 Undeleter](#)
- [13.10 Duplicate Finder](#)

# 1. System analysis



1: This toolbar lists all modules grouped by category.

2: The status of the current system analysis along with details on current available RAM, CPU and GPU is shown here.

3: The results of the most recent system analysis are displayed here.

Maximize the program window for an even more detailed list.

Click a tile to review results in more detail. Click "Show deleted" after cleaning to reveal the deletion history for each tile.

4: If enabled, the system analysis will be run on each program launch.

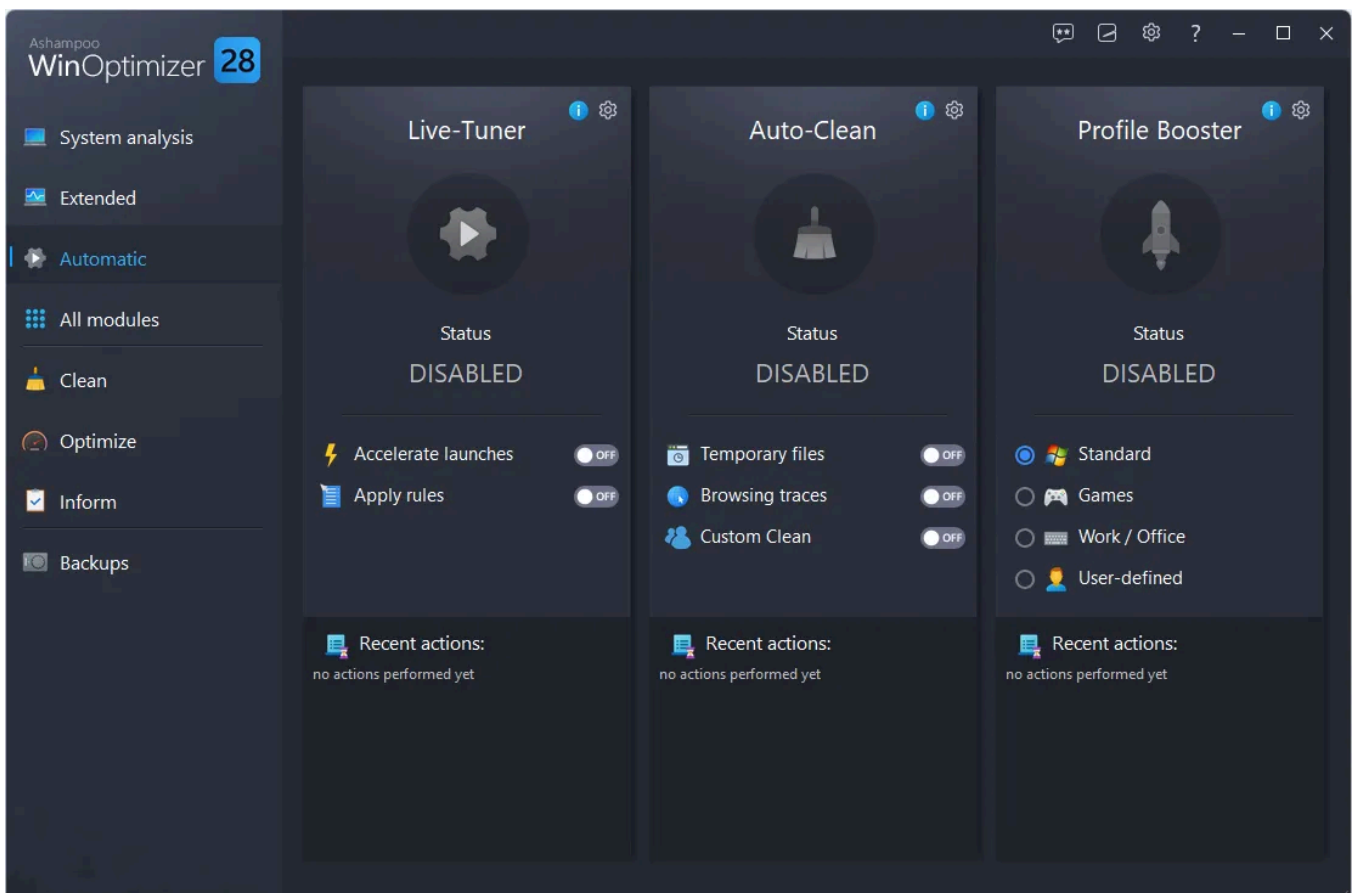
5: Runs the system analysis again.

6: Optimizes your PC according to the selected settings.

## 2. Extended

This module allows you to clean individual system areas that not affected by regular system analyses. This allows you to reclaim additional disk space, better protect your privacy, and fix some system issues (Windows Explorer, DirectX). Note that, depending on the affected area, applications/updates may initially perform slower after cleaning.

## 3. Automatic



You can enable/disable the various automatic features of WinOptimizer here and review

the 10 most recent actions. If needed, you can also export or delete the history of all actions.

Click the top-right cog wheel icons to access the settings for each function.

## 3.1 Live-Tuner

Live-Tuner adjusts process priorities to speed up application launches.

## 3.2 Auto-Clean

Many running applications store temporary data as various files that will continue to take up space once their applications are closed. Auto-Clean removes application-related temporary files as soon as the applications are closed to regain disk space.

Use "Custom Clean" to auto-delete individual files at regular intervals.

## 3.3 Profile Booster

Modern games are heavy on memory and CPU resources. Simultaneously running applications also require resources and may slow down your games. Game-Booster automatically terminates all processes/applications that are non-essential to the game to free up resources.

This feature optimizes your PC for various use cases by terminating irrelevant services/processes automatically.

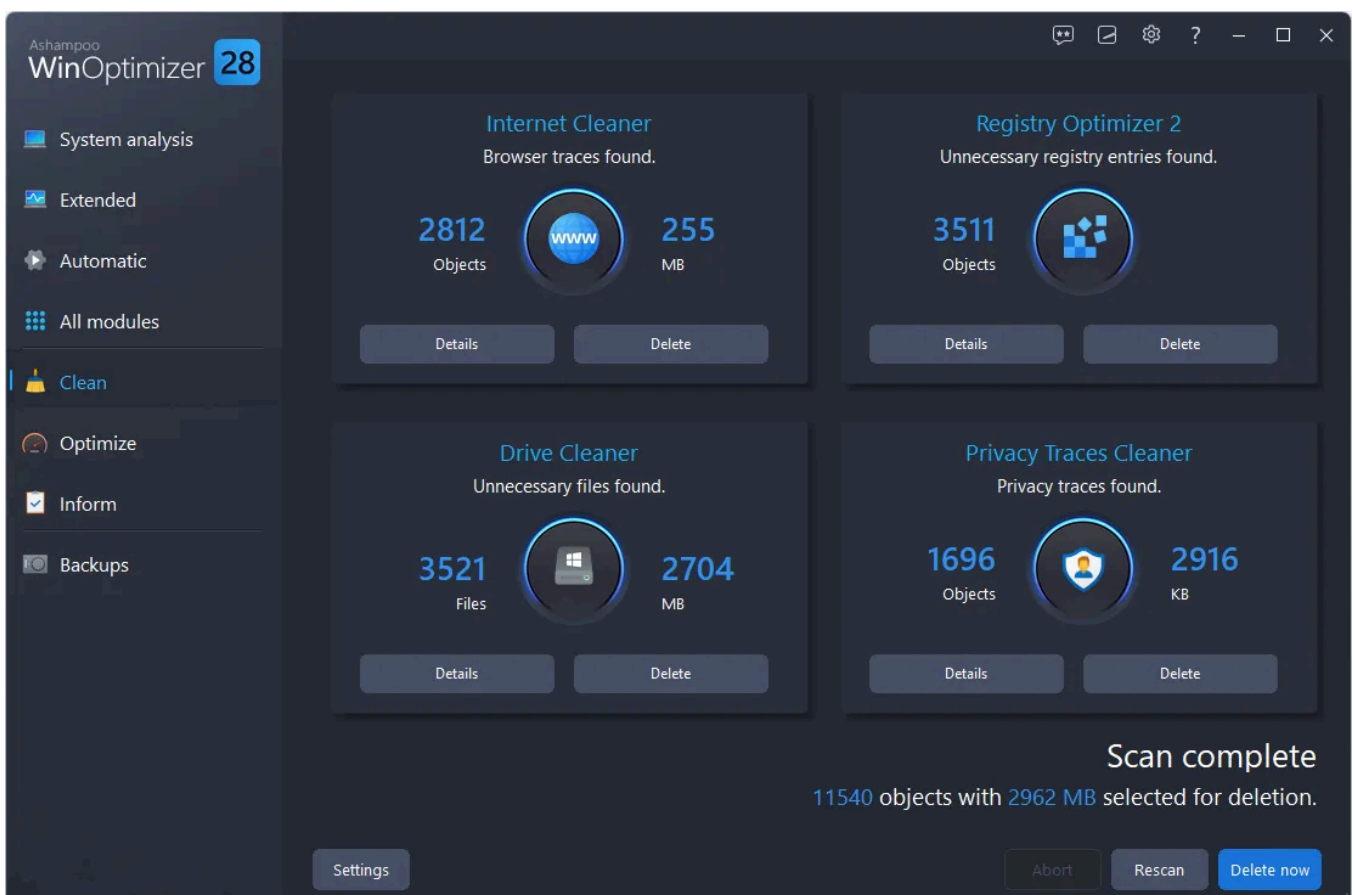
Terminated services will restart automatically when you switch profiles. Terminated processes will not!

# 4. Clean / Optimize / Inform

These dashboards bundle core features of related modules in an easily accessible interface. The affected modules will run as soon as you open a dashboard. Use the right-aligned circular buttons to perform a rescan for the affected module and the other buttons to make fine-adjustments or to access additional features.

Use the arrow button to run another analysis for the associated section and the toggle switch to enable/disable the section.

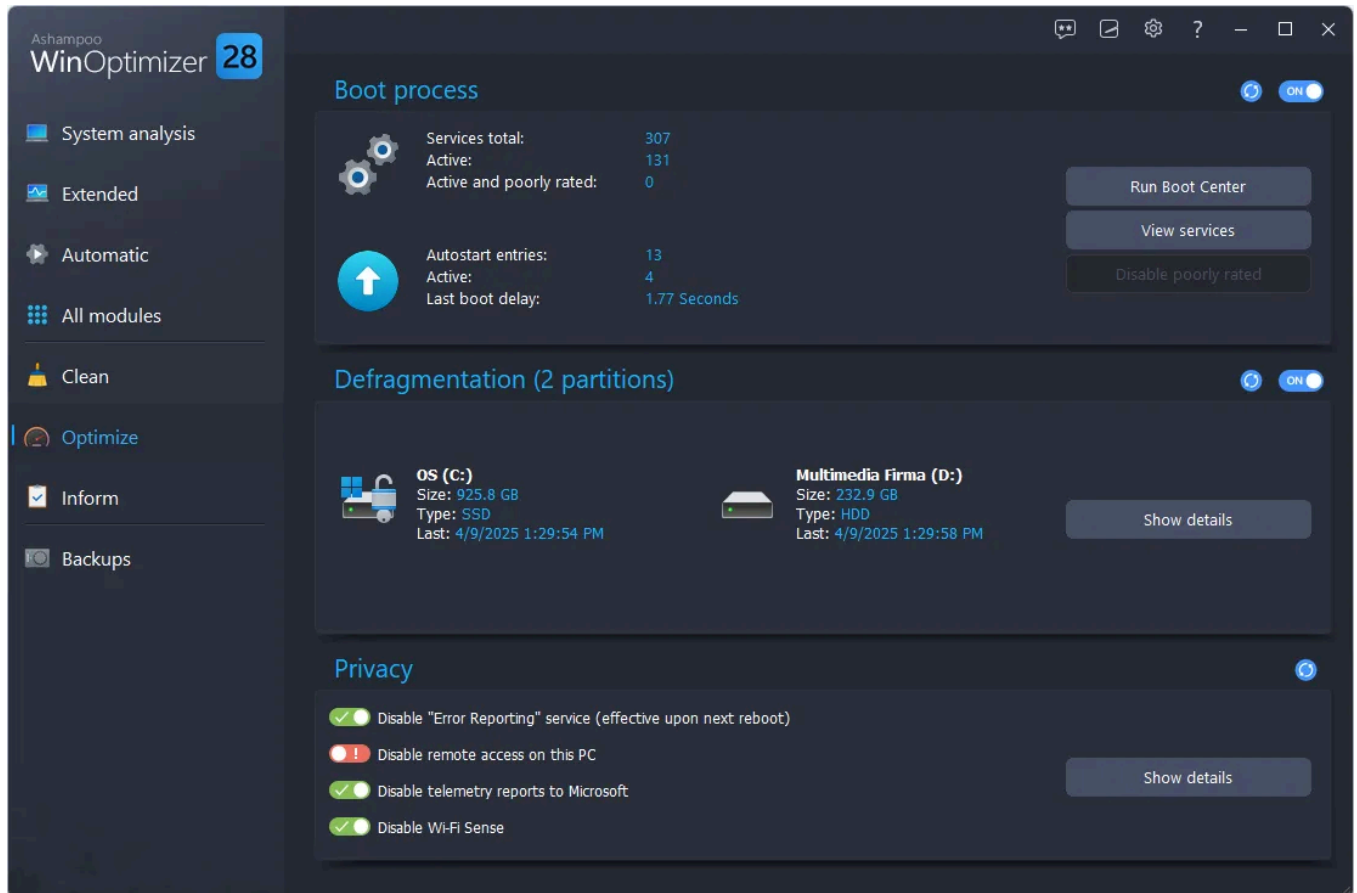
## 4.1 Clean



These modules help you clean the Registry, remove web browsing traces and to track

down no longer needed files.

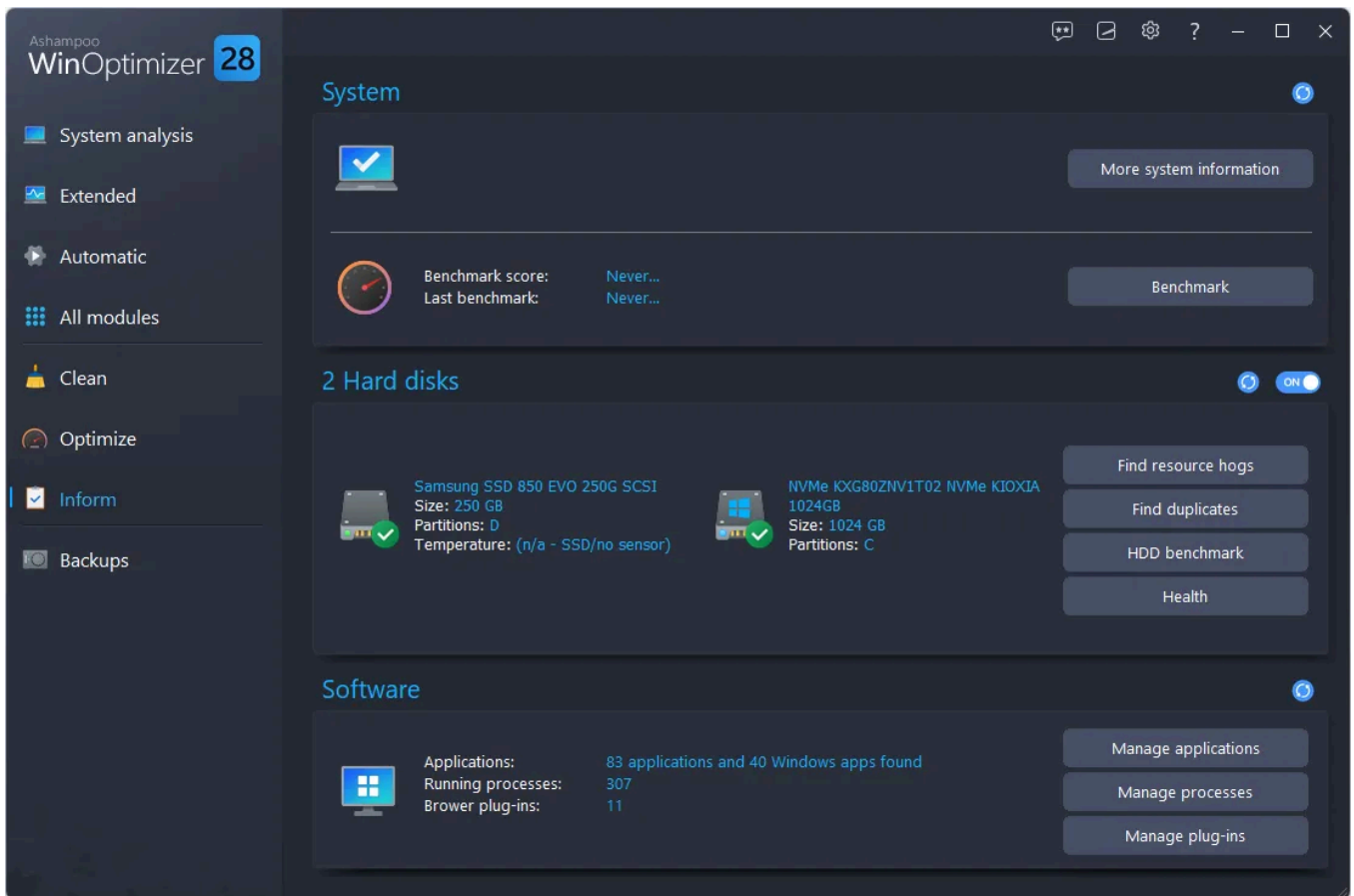
## 4.2 Optimize



Here, you can speed up boot times, defragment mechanical hard disks for faster access times and adjust essential privacy settings for added protection.

## 4.3 Inform



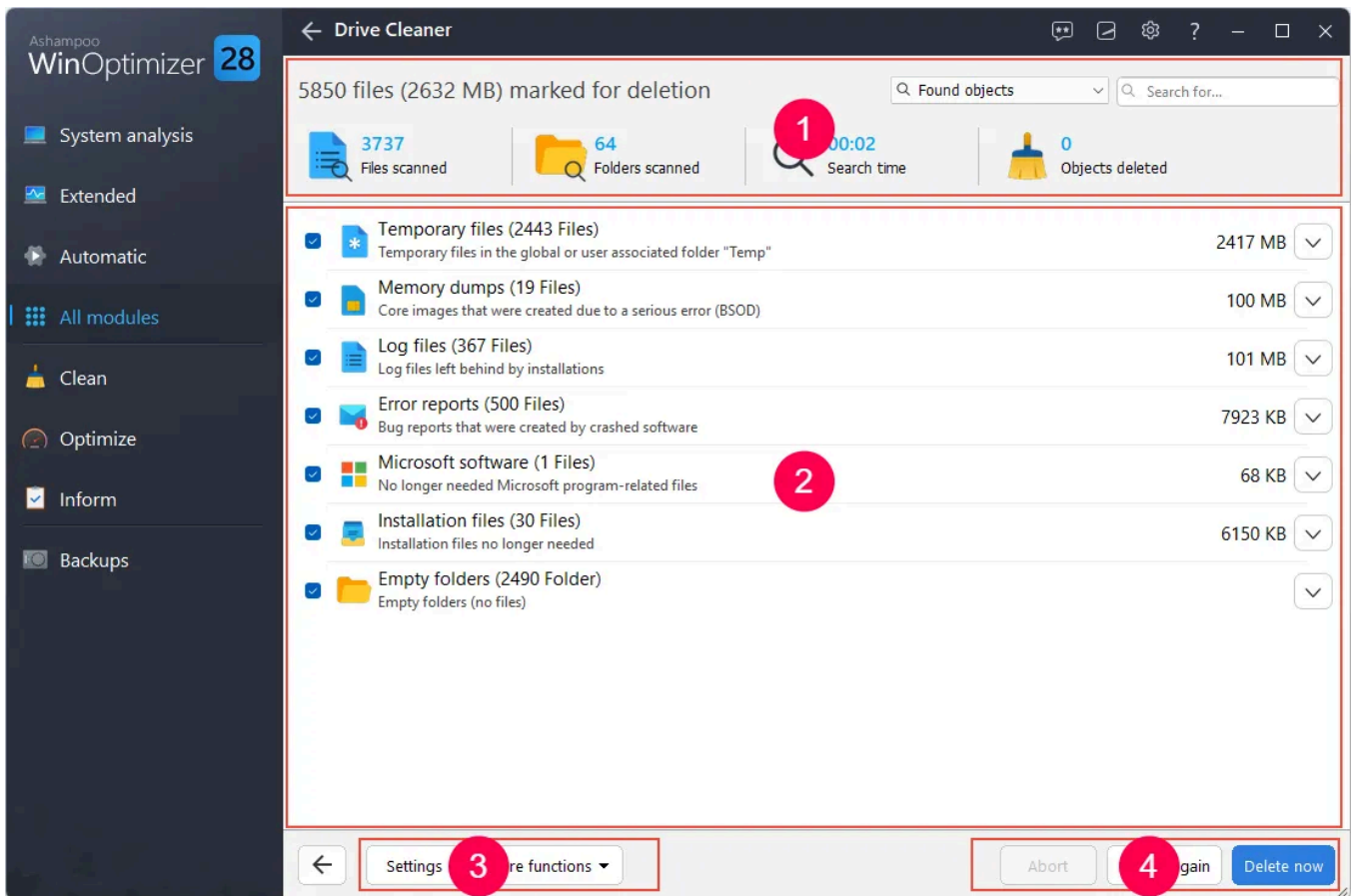


This dashboard provides essential details about your installed hardware and software.

## 5. All modules

WinOptimizer integrates with the system context menu and allows you to perform various actions, e.g. file encryption, by right-clicking files in Windows Explorer. You can also right-click the recycle bin and have its files permanently deleted.

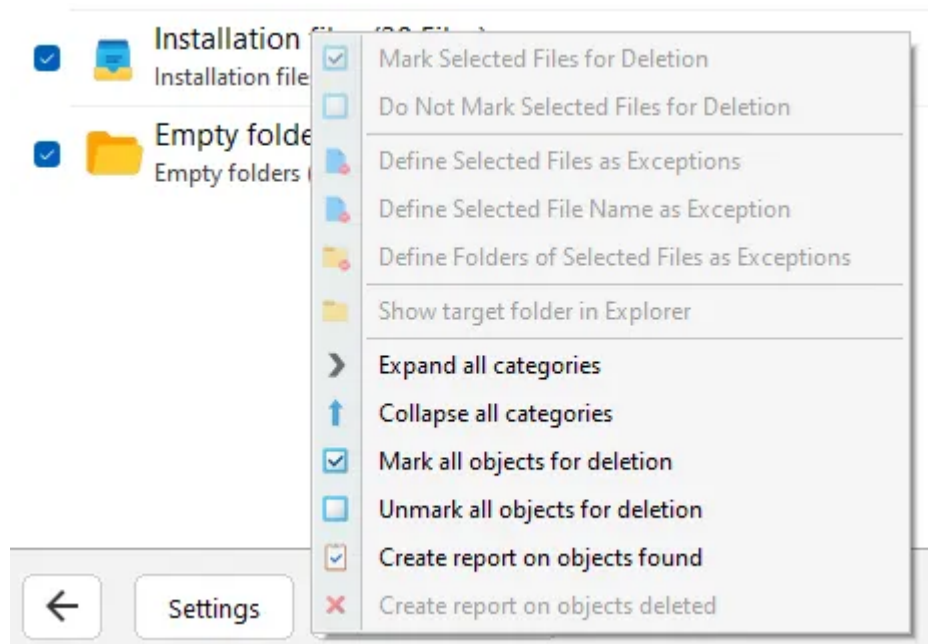
### 5.1 Basic handling



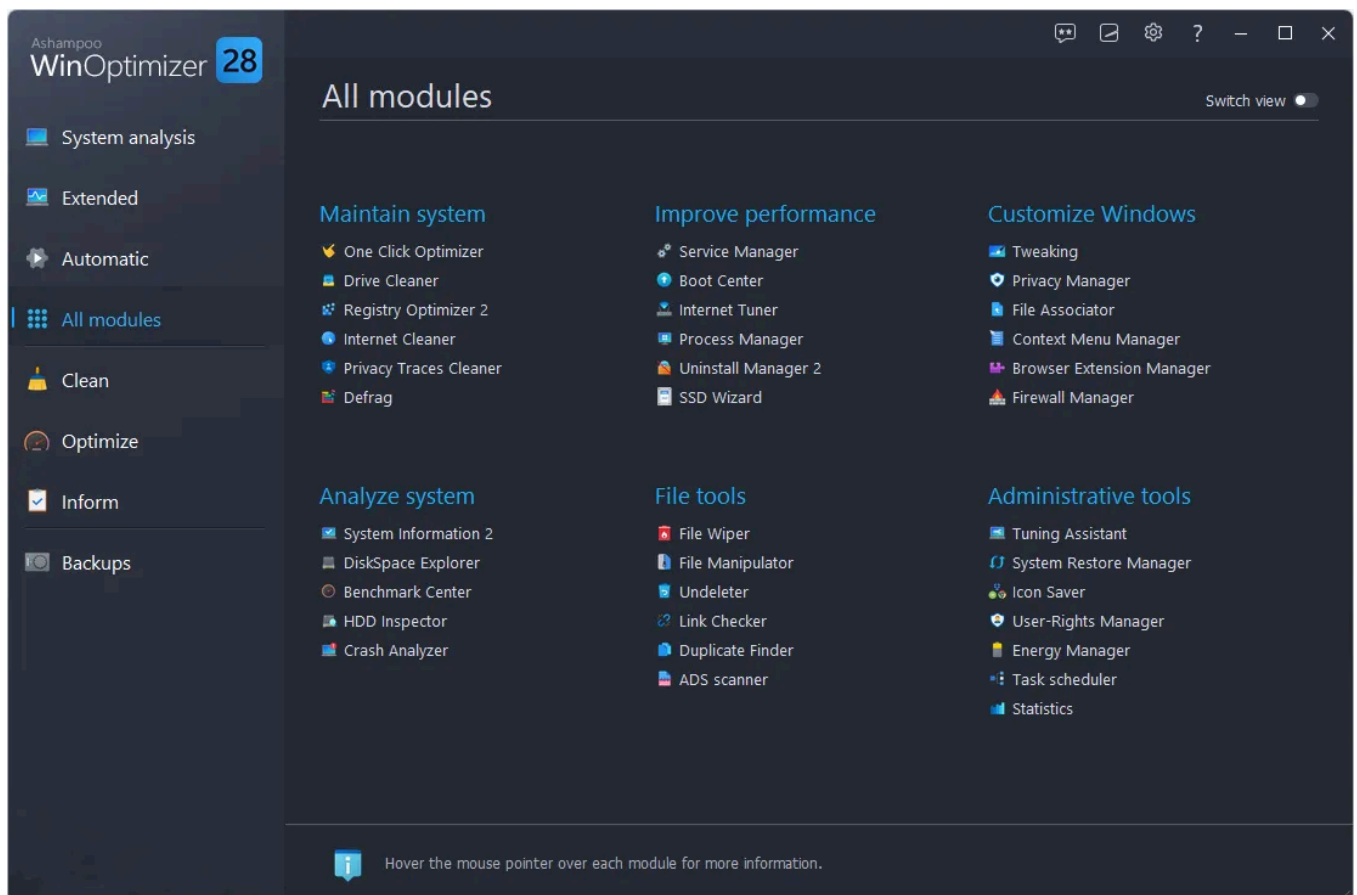
The tools generally follow the same pattern:

- 1: Summary of current settings and optional search field
- 2: Details; Categories are collapsible/expandable through arrow buttons
- 3: Module settings and more (convenience) functions
- 4: Action buttons

## 5.1.1 More functions



These are convenience functions, e.g. to make (de)selecting list entries easier.



Tools in WinOptimizer are grouped by into modules arranged by use cases.

1: Use this switch to toggle between a use-case and module names based view.

2: These modules will clean your steam of no longer needed files and more.

3: Performance enhancing features are located here.

4: Detailed information on installed hardware, software and the performance of your machine is available here.

5: With the help of these modules, you find and fix file-related errors.

6: These modules help you manage common PC settings, e.g. for user-rights management.

## 6. Maintain system

### 6.1 One Click Optimizer

This module runs Internet Cleaner, Drive Cleaner and Registry Optimizer in succession. Click the magnifying glass icons to open the affected modules and adjust the results. Click "Delete now" to remove all found objects.

### 6.2 Drive Cleaner

Drive Cleaner scans your system for no longer needed files and displays results grouped by categories. Use the check boxes to select/deselect individual results or use the top buttons to select all/no results from a category. Click "Create report" to save your results as a text file.

#### 6.2.1 Managing exceptions

You can whitelist individual entries through the right-click context menu to exclude them from deletion. Use the module settings to edit the whitelist.

1

Ashampoo WinOptimizer 28

- System analysis
- Extended
- Automatic
- All modules
- Clean
- Optimize
- Inform
- Backups

### Drive Cleaner

5852 files (2632 MB) marked for deletion

Found objects | Search for...

3738 Files scanned | 64 Folders scanned | 00:02 Search time | 0 Objects deleted

- ☒ Temporary files (2445 Files) 2417 MB  
Temporary files in the global or user associated folder "Temp"
- ☒ Memory dumps (19 Files) 100 MB  
Core images that were created due to a serious error (BSOD)
- ☒ Log files (367 Files) 101 MB  
Log files left behind by installations
- ☒ Error reports (500 Files) 7923 KB  
Bug reports that were created by crashed software
- ☒ Microsoft software (1 Files) 68 KB  
No longer needed Microsoft program-related files
- ☒ Installation files (30 Files) 6150 KB  
Installation files no longer needed
- ☒ Empty folders (2490 Folder)  
Empty folders (no files)

Settings | More functions | Abort | Search again | Delete now

2

Ashampoo WinOptimizer 28

- System analysis
- Extended
- Automatic
- All modules
- Clean
- Optimize
- Inform
- Backups

### Drive Cleaner

5852 files (2632 MB) marked for deletion

Found objects | Search for...

3738 Files scanned | 64 Folders scanned | 00:02 Search time | 0 Objects deleted

File/Folder	Type	Folder	Size
<input checked="" type="checkbox"/> Temporary files (2445 Files) 2417 MB			
Temporary files in the global or user associated folder "Temp"			
ASH5000940-20250409-0607.log	log	C:\Windows\TEMP\ASH5000940-20250409-0607.log	677 KB
ASH5000940-20250409-0651.log	log	C:\Windows\TEMP\ASH5000940-20250409-0651.log	526 KB
ASH5000940-20250409-0659.log	log	C:\Windows\TEMP\ASH5000940-20250409-0659.log	453 KB
ASH5000940-20250409-0801.log	log	C:\Windows\TEMP\ASH5000940-20250409-0801.log	453 KB
ASH5000940-20250409-0841.log	log	C:\Windows\TEMP\ASH5000940-20250409-0841.log	456 KB
ASH5000940-20250409-0902.log	log	C:\Windows\TEMP\ASH5000940-20250409-0902.log	450 KB
ASH5000940-20250409-0928.log	log	C:\Windows\TEMP\ASH5000940-20250409-0928.log	453 KB
ASH5000940-20250409-0943.log	log	C:\Windows\TEMP\ASH5000940-20250409-0943.log	450 KB
ASH5000940-20250409-1004.log	log	C:\Windows\TEMP\ASH5000940-20250409-1004.log	450 KB
ASH5000940-20250409-1012.log	log	C:\Windows\TEMP\ASH5000940-20250409-1012.log	450 KB
ASH5000940-20250409-1038.log	log	C:\Windows\TEMP\ASH5000940-20250409-1038.log	449 KB
ASH5000940-20250409-1106.log	log	C:\Windows\TEMP\ASH5000940-20250409-1106.log	450 KB
ASH5000940-20250409-1156.log	log	C:\Windows\TEMP\ASH5000940-20250409-1156.log	449 KB
ASH5000940-20250409-1329.log	log	C:\Windows\TEMP\ASH5000940-20250409-1329.log	450 KB
ASH5000940-20250409-1420.log	log	C:\Windows\TEMP\ASH5000940-20250409-1420.log	453 KB
ASH5000940-20250409-1433.log	log	C:\Windows\TEMP\ASH5000940-20250409-1433.log	450 KB
ASH5000940-20250410-0601.log	log	C:\Windows\TEMP\ASH5000940-20250410-0601.log	460 KB
ASH5000940-20250410-0607.log	log	C:\Windows\TEMP\ASH5000940-20250410-0607.log	189 KB
ASH5000940-20250410-0612.log	log	C:\Windows\TEMP\ASH5000940-20250410-0612.log	450 KB
ASH5000940-20250410-0641.log	log	C:\Windows\TEMP\ASH5000940-20250410-0641.log	457 KB

Settings | More functions | Abort | Search again | Delete now



3

Ashampoo WinOptimizer 28

- System analysis
- Extended
- Automatic
- All modules
- Clean
- Optimize
- Inform
- Backups

### Drive Cleaner

5852 files (2632 MB) marked for deletion

3738 Files scanned | 64 Folders scanned | 00:02 Search time | 0 Objects deleted

File/Folder	Type	Folder	Size
<b>Temporary files (2445 Files)</b> 2417 MB			
Temporary files in the global or user associated folder "Temp"			
ASH5000940-20250409-0607.log	log	C:\Windows\TEMP\ASH5000940-20250409-0607.log	677 KB
ASH5000940-20250409-0651.log	log	C:\Windows\TEMP\ASH5000940-20250409-0651.log	526 KB
ASH5000940-20250409-0659.log	log	C:\Windows\TEMP\ASH5000940-20250409-0659.log	453 KB
ASH5000940-20250409-0801.log	log	C:\Windows\TEMP\ASH5000940-20250409-0801.log	453 KB
ASH5000940-20250409-0841.log	log	C:\Windows\TEMP\ASH5000940-20250409-0841.log	456 KB
ASH5000940-20250409-0902.log	log	C:\Windows\TEMP\ASH5000940-20250409-0902.log	450 KB
ASH5000940-20250409-0928.log	log	C:\Windows\TEMP\ASH5000940-20250409-0928.log	453 KB
ASH5000940-20250409-0943.log	log	C:\Windows\TEMP\ASH5000940-20250409-0943.log	450 KB
ASH5000940-20250409-1004.log	log	C:\Windows\TEMP\ASH5000940-20250409-1004.log	450 KB
ASH5000940-20250409-1012.log	log	C:\Windows\TEMP\ASH5000940-20250409-1012.log	450 KB
ASH5000940-20250409-1038.log	log	C:\Windows\TEMP\ASH5000940-20250409-1038.log	449 KB
ASH5000940-20250409-1106.log	log	C:\Windows\TEMP\ASH5000940-20250409-1106.log	450 KB
ASH5000940-20250409-1156.log	log	C:\Windows\TEMP\ASH5000940-20250409-1156.log	449 KB
ASH5000940-20250409-1329.log	log	C:\Windows\TEMP\ASH5000940-20250409-1329.log	450 KB
ASH5000940-20250409-1420.log	log	C:\Windows\TEMP\ASH5000940-20250409-1420.log	453 KB
ASH5000940-20250409-1433.log	log	C:\Windows\TEMP\ASH5000940-20250409-1433.log	450 KB
ASH5000940-20250410-0601.log	log	C:\Windows\TEMP\ASH5000940-20250410-0601.log	460 KB
ASH5000940-20250410-0607.log	log	C:\Windows\TEMP\ASH5000940-20250410-0607.log	189 KB
ASH5000940-20250410-0612.log	log	C:\Windows\TEMP\ASH5000940-20250410-0612.log	450 KB
ASH5000940-20250410-0641.log	log	C:\Windows\TEMP\ASH5000940-20250410-0641.log	457 KB
ASH5000940-20250410-0730.log	log	C:\Windows\TEMP\ASH5000940-20250410-0730.log	440 KB

Settings More functions Abort Search again Delete now

**Ashampoo WinOptimizer 28**

System analysis  
Extended  
Automatic  
All modules  
Clean  
Optimize  
Inform  
Backups

### Drive Cleaner

5852 files (2632 MB) marked for deletion

3738 Files scanned | 64 Folders scanned | 00:02 Search time | 0 Objects deleted

Found objects | Search for...

File/Folder	Type	Folder	Size
<b>Temporary files (2445 Files)</b> 2417 MB			
Temporary files in the global or user associated folder "Temp"			
<input checked="" type="checkbox"/> ASH5000940-20250409-0607.log	log	C:\Windows\TEMP\ASH5000940-20250409-0607.log	677 KB
<input checked="" type="checkbox"/> ASH5000940-20250409-0651.log	log	C:\Windows\TEMP\ASH5000940-20250409-0651.log	526 KB
<input checked="" type="checkbox"/> ASH5000940-20250409-0659.log	log	C:\Windows\TEMP\ASH5000940-20250409-0659.log	453 KB
<input checked="" type="checkbox"/> ASH5000940-20250409-0801.log	log	C:\Windows\TEMP\ASH5000940-20250409-0801.log	453 KB
<input checked="" type="checkbox"/> ASH5000940-20250409-0841.log	log	C:\Windows\TEMP\ASH5000940-20250409-0841.log	456 KB
<input checked="" type="checkbox"/> ASH5000940-20250409-0902.log	log	C:\Windows\TEMP\ASH5000940-20250409-0902.log	450 KB
<input checked="" type="checkbox"/> ASH5000940-20250409-0928.log	log	C:\Windows\TEMP\ASH5000940-20250409-0928.log	453 KB
<input checked="" type="checkbox"/> ASH5000940-20250409-0943.log	log	C:\Windows\TEMP\ASH5000940-20250409-0943.log	450 KB
<input checked="" type="checkbox"/> ASH5000940-20250409-1004.log	log	C:\Windows\TEMP\ASH5000940-20250409-1004.log	450 KB
<input checked="" type="checkbox"/> ASH5000940-20250409-1012.log	log	C:\Windows\TEMP\ASH5000940-20250409-1012.log	450 KB
<input checked="" type="checkbox"/> ASH5000940-20250409-1038.log	log	C:\Windows\TEMP\ASH5000940-20250409-1038.log	449 KB
<input checked="" type="checkbox"/> ASH5000940-20250409-1106.log	log	C:\Windows\TEMP\ASH5000940-20250409-1106.log	450 KB
<input checked="" type="checkbox"/> ASH5000940-20250409-1156.log	log	C:\Windows\TEMP\ASH5000940-20250409-1156.log	449 KB
<input checked="" type="checkbox"/> ASH5000940-20250409-1329.log	log	C:\Windows\TEMP\ASH5000940-20250409-1329.log	450 KB
<input checked="" type="checkbox"/> ASH5000940-20250409-1420.log	log	C:\Windows\TEMP\ASH5000940-20250409-1420.log	453 KB
<input checked="" type="checkbox"/> ASH5000940-20250409-1433.log	log	C:\Windows\TEMP\ASH5000940-20250409-1433.log	450 KB
<input checked="" type="checkbox"/> ASH5000940-20250410-0601.log	log	C:\Windows\TEMP\ASH5000940-20250410-0601.log	460 KB
<input checked="" type="checkbox"/> ASH5000940-20250410-0607.log	log	C:\Windows\TEMP\ASH5000940-20250410-0607.log	189 KB
<input checked="" type="checkbox"/> ASH5000940-20250410-0612.log	log	C:\Windows\TEMP\ASH5000940-20250410-0612.log	450 KB
<input checked="" type="checkbox"/> ASH5000940-20250410-0641.log	log	C:\Windows\TEMP\ASH5000940-20250410-0641.log	457 KB
<input checked="" type="checkbox"/> ASH5000940-20250410-0730.log	log	C:\Windows\TEMP\ASH5000940-20250410-0730.log	449 KB

Mark Selected Files for Deletion  
Do Not Mark Selected Files for Deletion  
Define Selected Files as Exceptions  
Define File Name as Exception  
Define of Selected Files as Exceptions  
Show target folder in Explorer  
Expand all categories  
Collapse all categories  
Mark all objects for deletion  
Unmark all objects for deletion  
Create report on objects found  
Create report on objects deleted

Settings | More functions | Abort | Search again | Delete now

5

Ashampoo  
WinOptimizer 28

System analysis

Extended

Automatic

All modules

Clean

Optimize

Inform

Backups

← Drive Cleaner

5851 files (2631 MB) marked for deletion

Found objects

Search for...

3738  
Files scanned64  
Folders scanned00:02  
Search time0  
Objects deleted

File/Folder	Type	Folder	Size
Temporary files (2444/2445 Files) Temporary files in the global or user associated folder "Temp"			2416 MB
<input type="checkbox"/> ASH5000940-20250409-0607.log	log	C:\Windows\TEMP\ASH5000940-20250409-0607.log	677 KB
<input checked="" type="checkbox"/> ASH5000940-20250409-0651.log	log	C:\Windows\TEMP\ASH5000940-20250409-0651.log	526 KB
<input checked="" type="checkbox"/> ASH5000940-20250409-0659.log	log	C:\Windows\TEMP\ASH5000940-20250409-0659.log	453 KB
<input checked="" type="checkbox"/> ASH5000940-20250409-0801.log	log	C:\Windows\TEMP\ASH5000940-20250409-0801.log	453 KB
<input checked="" type="checkbox"/> ASH5000940-20250409-0841.log	log	C:\Windows\TEMP\ASH5000940-20250409-0841.log	456 KB
<input checked="" type="checkbox"/> ASH5000940-20250409-0902.log	log	C:\Windows\TEMP\ASH5000940-20250409-0902.log	450 KB
<input checked="" type="checkbox"/> ASH5000940-20250409-0928.log	log	C:\Windows\TEMP\ASH5000940-20250409-0928.log	453 KB
<input checked="" type="checkbox"/> ASH5000940-20250409-0943.log	log	C:\Windows\TEMP\ASH5000940-20250409-0943.log	450 KB
<input checked="" type="checkbox"/> ASH5000940-20250409-1004.log	log	C:\Windows\TEMP\ASH5000940-20250409-1004.log	450 KB
<input checked="" type="checkbox"/> ASH5000940-20250409-1012.log	log	C:\Windows\TEMP\ASH5000940-20250409-1012.log	450 KB
<input checked="" type="checkbox"/> ASH5000940-20250409-1038.log	log	C:\Windows\TEMP\ASH5000940-20250409-1038.log	449 KB
<input checked="" type="checkbox"/> ASH5000940-20250409-1106.log	log	C:\Windows\TEMP\ASH5000940-20250409-1106.log	450 KB
<input checked="" type="checkbox"/> ASH5000940-20250409-1156.log	log	C:\Windows\TEMP\ASH5000940-20250409-1156.log	449 KB
<input checked="" type="checkbox"/> ASH5000940-20250409-1329.log	log	C:\Windows\TEMP\ASH5000940-20250409-1329.log	450 KB
<input checked="" type="checkbox"/> ASH5000940-20250409-1420.log	log	C:\Windows\TEMP\ASH5000940-20250409-1420.log	453 KB
<input checked="" type="checkbox"/> ASH5000940-20250409-1433.log	log	C:\Windows\TEMP\ASH5000940-20250409-1433.log	450 KB
<input checked="" type="checkbox"/> ASH5000940-20250410-0601.log	log	C:\Windows\TEMP\ASH5000940-20250410-0601.log	460 KB
<input checked="" type="checkbox"/> ASH5000940-20250410-0607.log	log	C:\Windows\TEMP\ASH5000940-20250410-0607.log	189 KB
<input checked="" type="checkbox"/> ASH5000940-20250410-0612.log	log	C:\Windows\TEMP\ASH5000940-20250410-0612.log	450 KB
<input checked="" type="checkbox"/> ASH5000940-20250410-0641.log	log	C:\Windows\TEMP\ASH5000940-20250410-0641.log	457 KB
<input checked="" type="checkbox"/> ASH5000940-20250410-0730.log	log	C:\Windows\TEMP\ASH5000940-20250410-0730.log	449 KB



Settings

More functions ▾

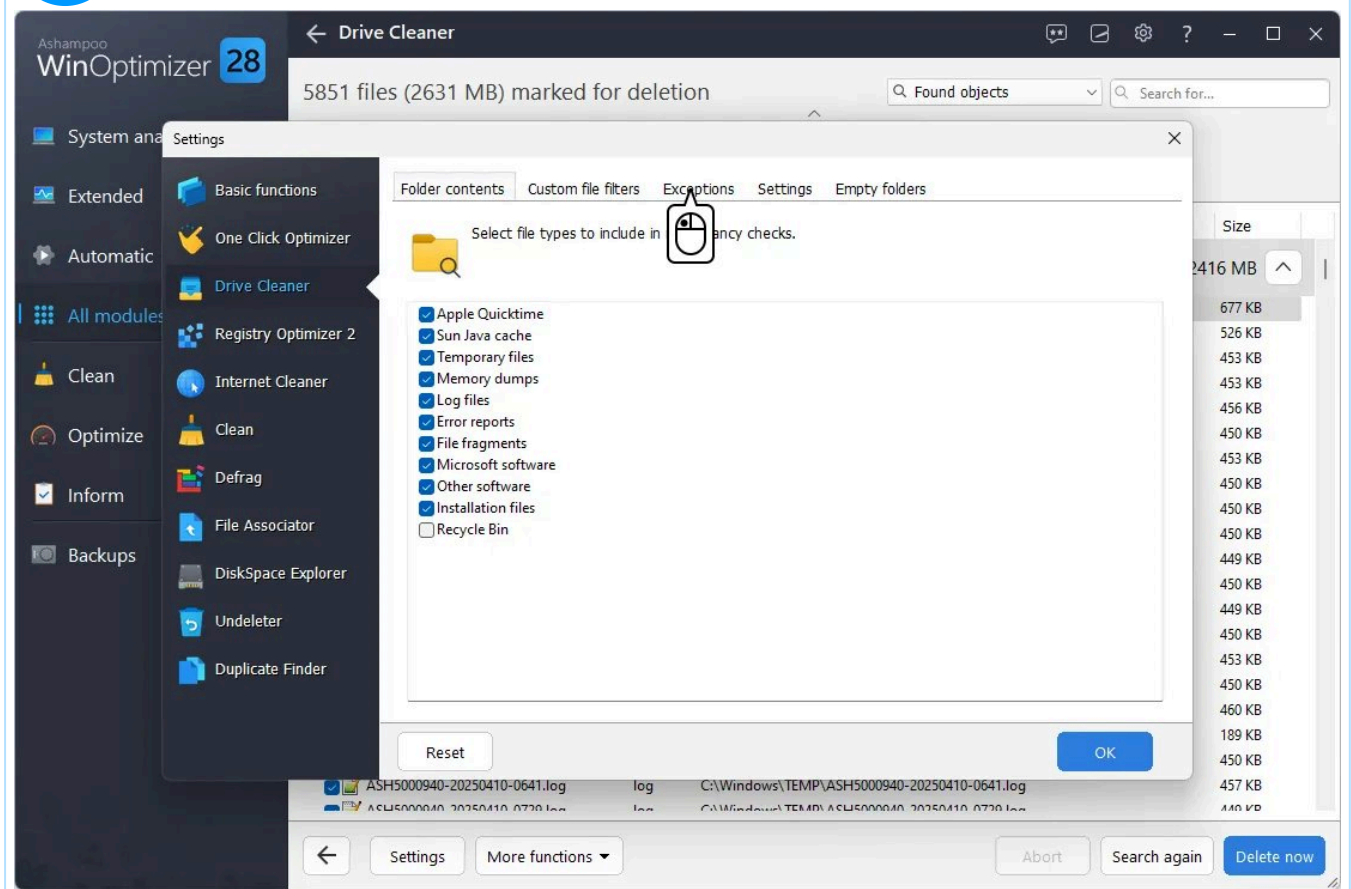
Abort

Search again

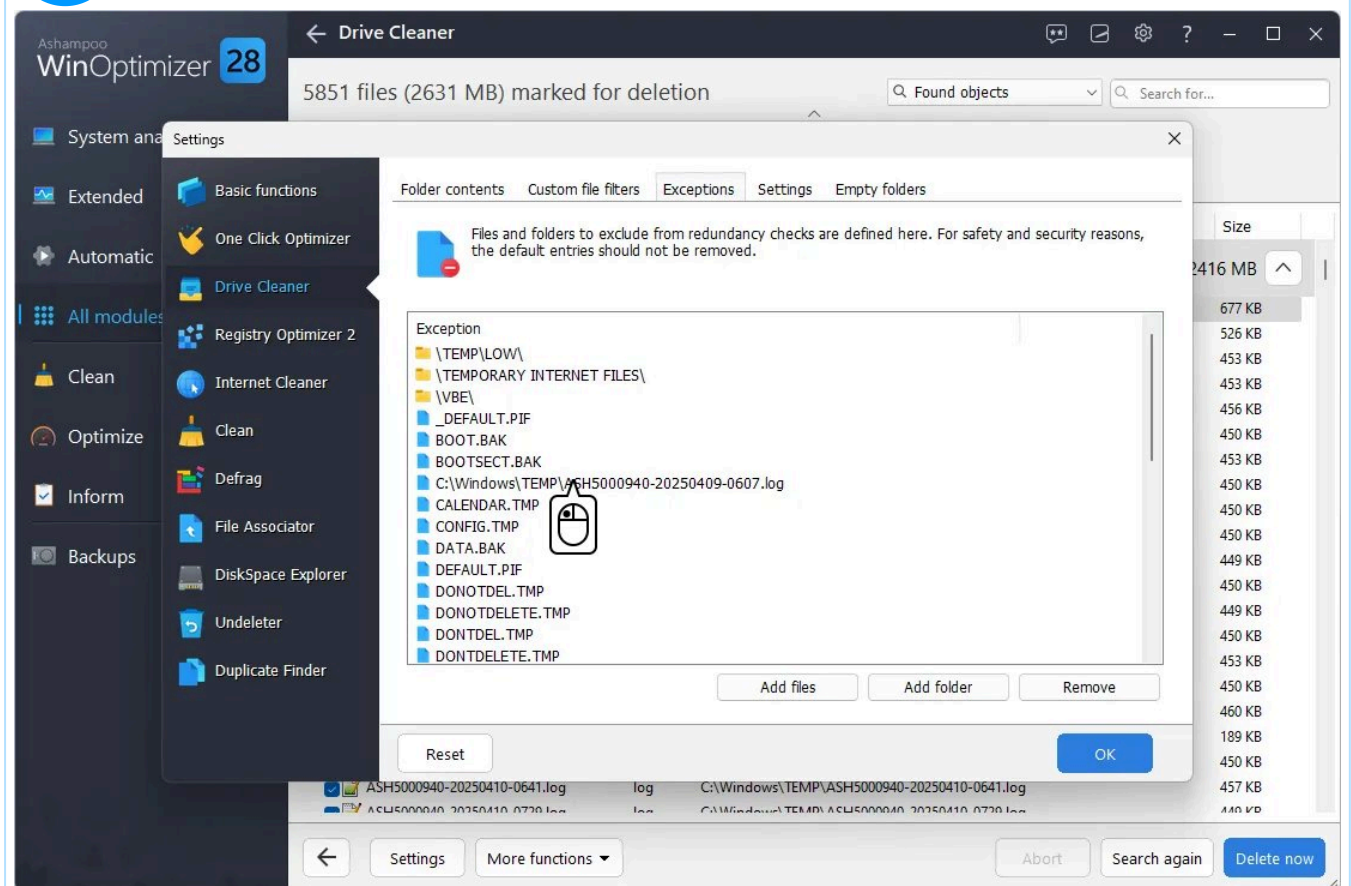
Delete now

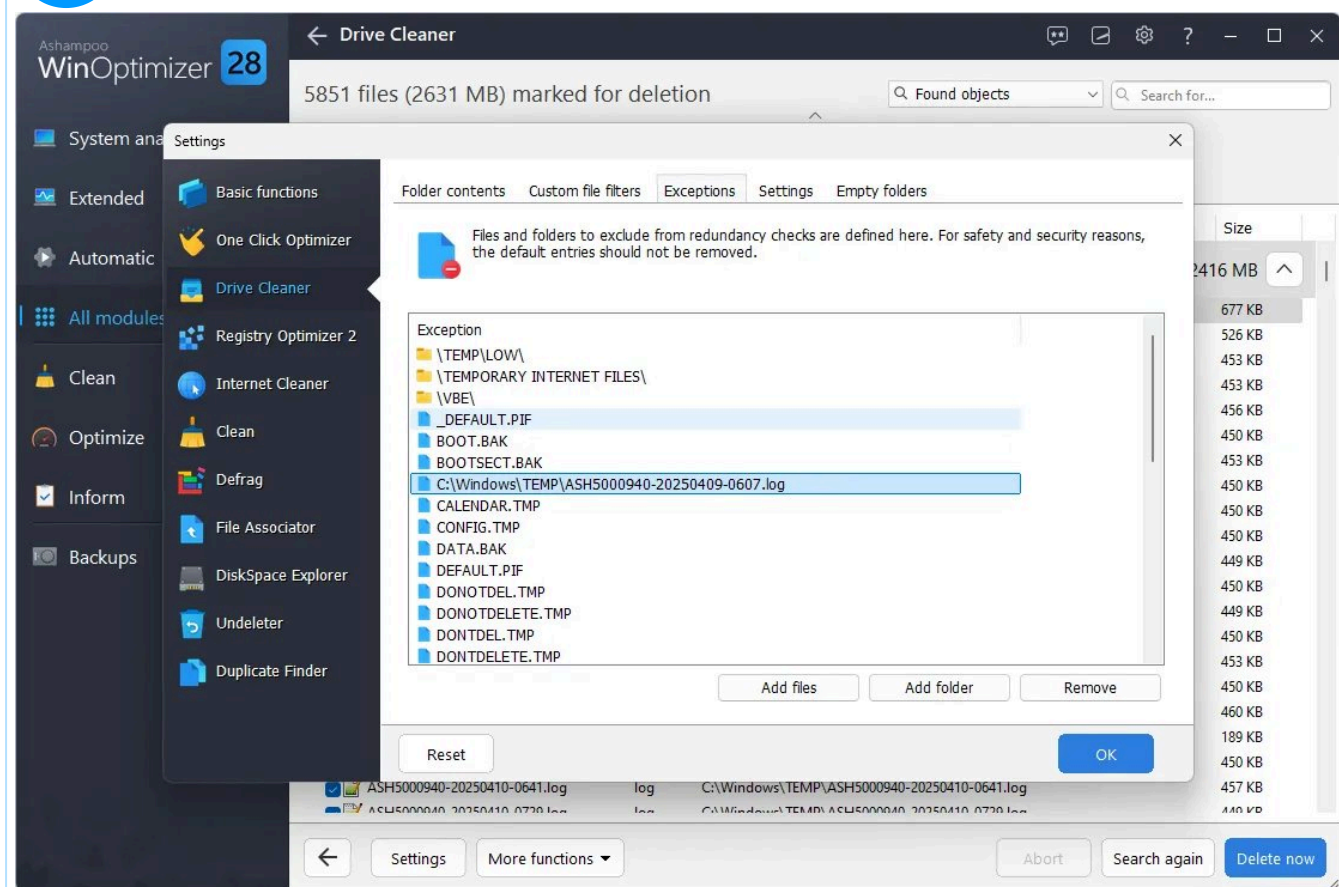


6



7





## 6.3 Registry Optimizer

Registry Optimizer scans your Windows Registry database for no longer needed entries and displays results grouped by categories. Use the check boxes to select/deselect individual results or use the top buttons to select all/no results from a category. Click "Write a report" to save your results as a text file. Right click a result to access the context menu. You may then specify the entry as an exception to exclude it from future searches. You can remove exceptions in the settings for this module.

### 6.3.1 Managing exceptions

You can whitelist individual entries through the right-click context menu to exclude them from deletion. Use the module settings to edit the whitelist.

1

Ashampoo WinOptimizer 28

Registry Optimizer 2

3512 marked for deletion

25412 Values scanned | 97697 Keys scanned | 00:03 Search time | 0 Objects deleted

- ☒ File formats  
File formats were entered wrongly or faulty 163 Objects
- ☒ COM, OLE, ActiveX  
System objects were entered incorrectly or incompletely 152 Objects
- ☒ "shared files"  
References to non-existing shared files 999 Objects
- ☒ Help files  
References to missing help files of applications 17 Objects
- ☒ Application paths  
Folders for applications or installations are wrong or faulty 301 Objects
- ☒ Software  
Information on the installations are wrong or faulty 1843 Objects
- ☒ History lists  
Unnecessary information on recently used files 27 Objects
- ☒ Windows Firewall  
No longer needed cache- and temporary files from miscellaneous Microsoft software 10 Objects

Settings More functions Abort Search again Delete now

2

Ashampoo WinOptimizer 28

Registry Optimizer 2

3512 marked for deletion

25412 Values scanned | 97697 Keys scanned | 00:03 Search time | 0 Objects deleted

- ☒ File formats  
File formats were entered wrongly or faulty 163 Objects
  - ☒ Empty "Open With" list for file name .abr
  - ☒ "Open With" list for file name .afdesign
  - ☒ Empty "Open With" list for file name .aftertemplate
  - ☒ Empty "Open With" list for file name .ai
  - ☒ Empty "Open With" list for file name .app
  - ☒ Empty "Open With" list for file name .aspx
  - ☒ Empty "Open With" list for file name .asp
  - ☒ Empty "Open With" list for file name .aspx
  - ☒ Empty "Open With" list for file name .avif
  - ☒ Empty "Open With" list for file name .bak

Settings More functions Abort Search again Delete now

3

Ashampoo  
**WinOptimizer 28**

System analysis

Extended

Automatic

All modules

Clean

Optimize

Inform

Backups

← Registry Optimizer 2

3512 marked for deletion

Found objects

Search for...

25412  
Values scanned

97697  
Keys scanned

00:03  
Search time

0  
Objects deleted

File formats

File formats were entered wrongly or faulty

163 Objects

Empty "Open With" list for file name .abr

Empty "Open With" list for file name .afdesign

Empty "Open With" list for file name .aftertemplate

Empty "Open With" list for file name .ai

Empty "Open With" list for file name .app

Empty "Open With" list for file name .ascx

Empty "Open With" list for file name .asp

Empty "Open With" list for file name .aspx

Empty "Open With" list for file name .avif

Empty "Open With" list for file name .bak

←

Settings

More functions

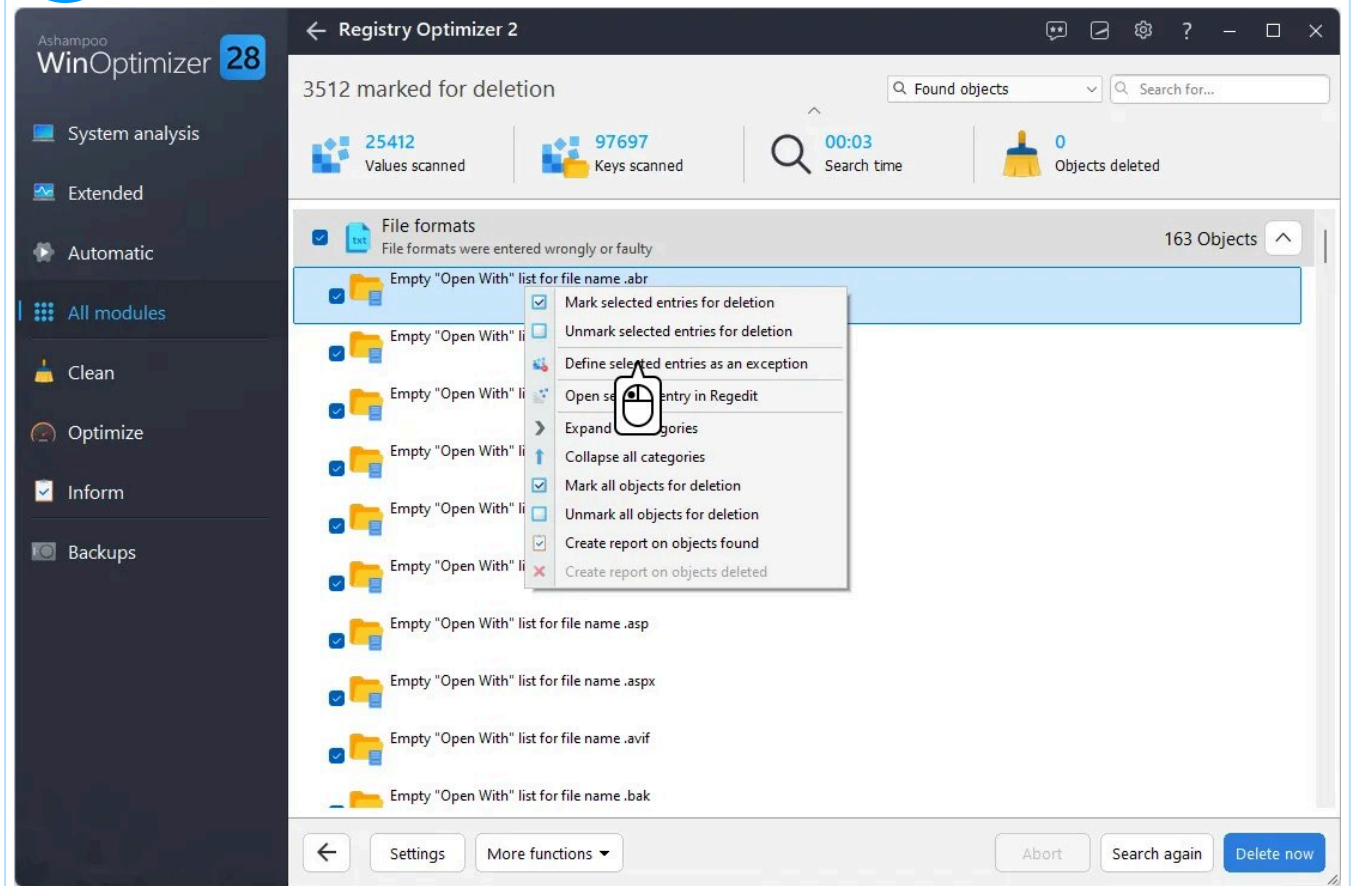
Abort

Search again

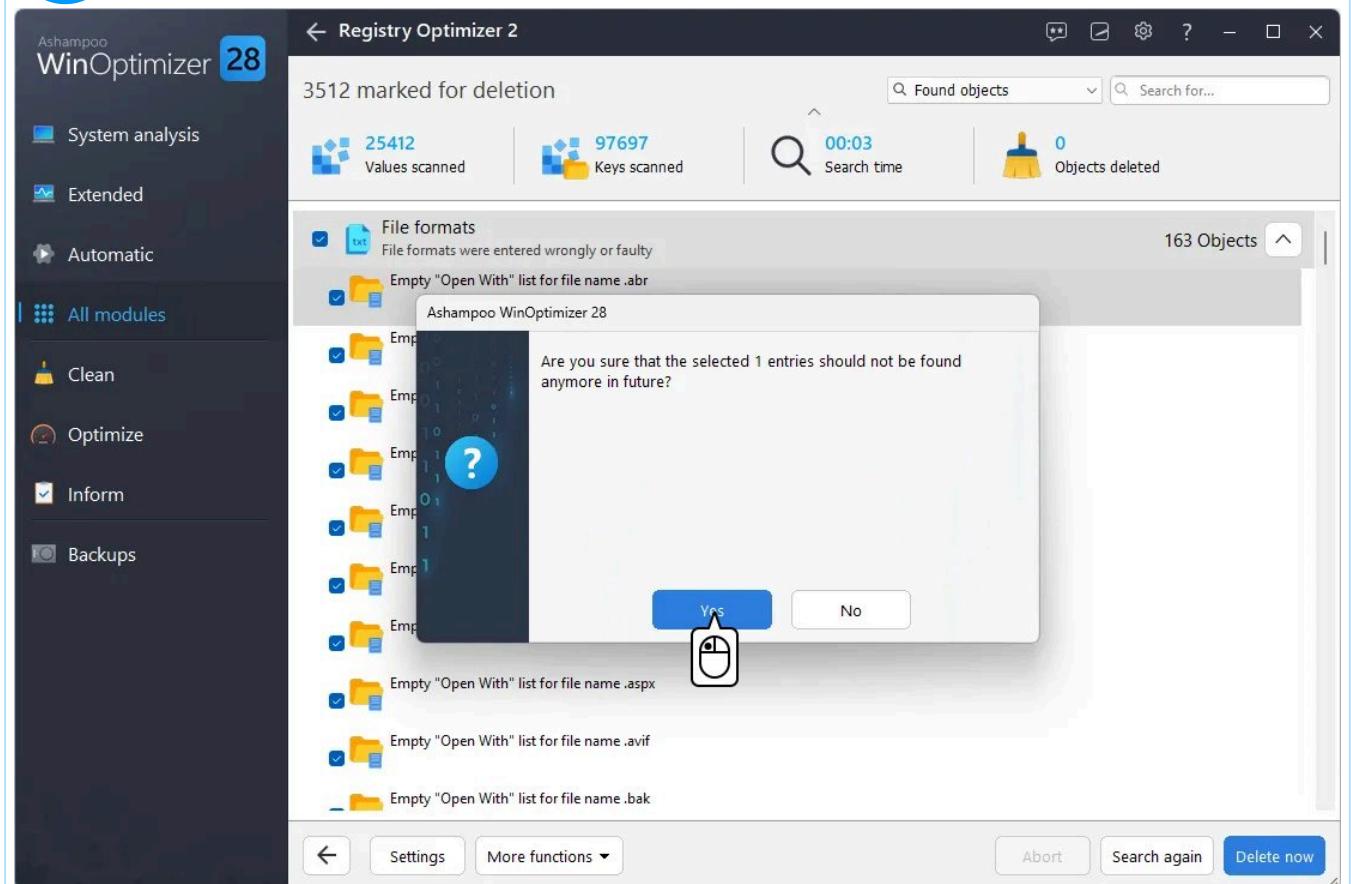
Delete now



4



5



Ashampoo WinOptimizer 28

System analysis  
Extended  
Automatic  
All modules  
Clean  
Optimize  
Inform  
Backups

Registry Optimizer 2


3511 marked for deletion

25412 Values scanned | 97697 Keys scanned | 00:03 Search time | 0 Objects deleted

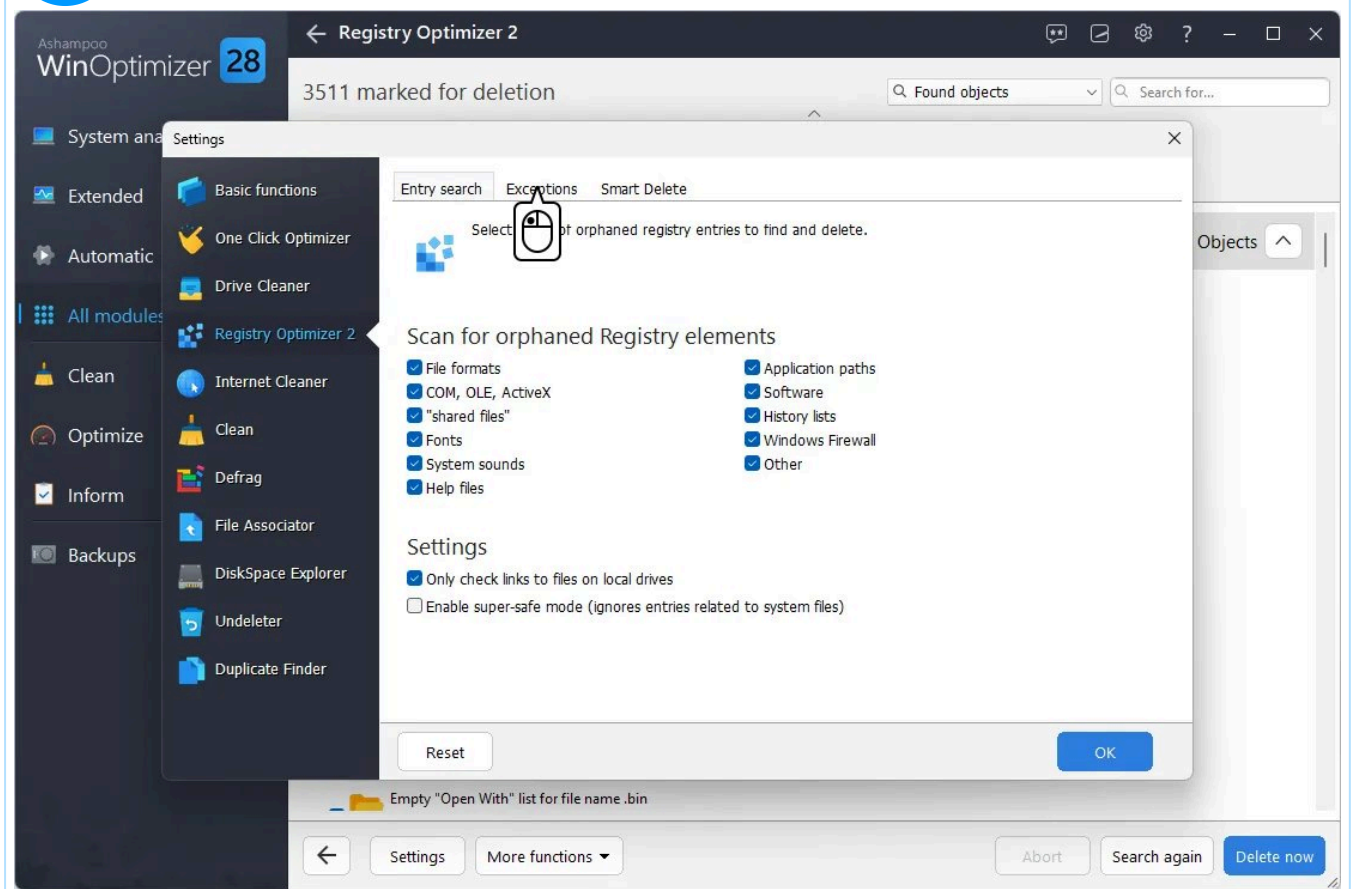
File formats  
File formats were entered wrongly or faulty 162 Objects

- Empty "Open With" list for file name .afdesign
- Empty "Open With" list for file name .aftertemplate
- Empty "Open With" list for file name .ai
- Empty "Open With" list for file name .app
- Empty "Open With" list for file name .aspx
- Empty "Open With" list for file name .asp
- Empty "Open With" list for file name .aspx
- Empty "Open With" list for file name .avif
- Empty "Open With" list for file name .bak
- Empty "Open With" list for file name .bin

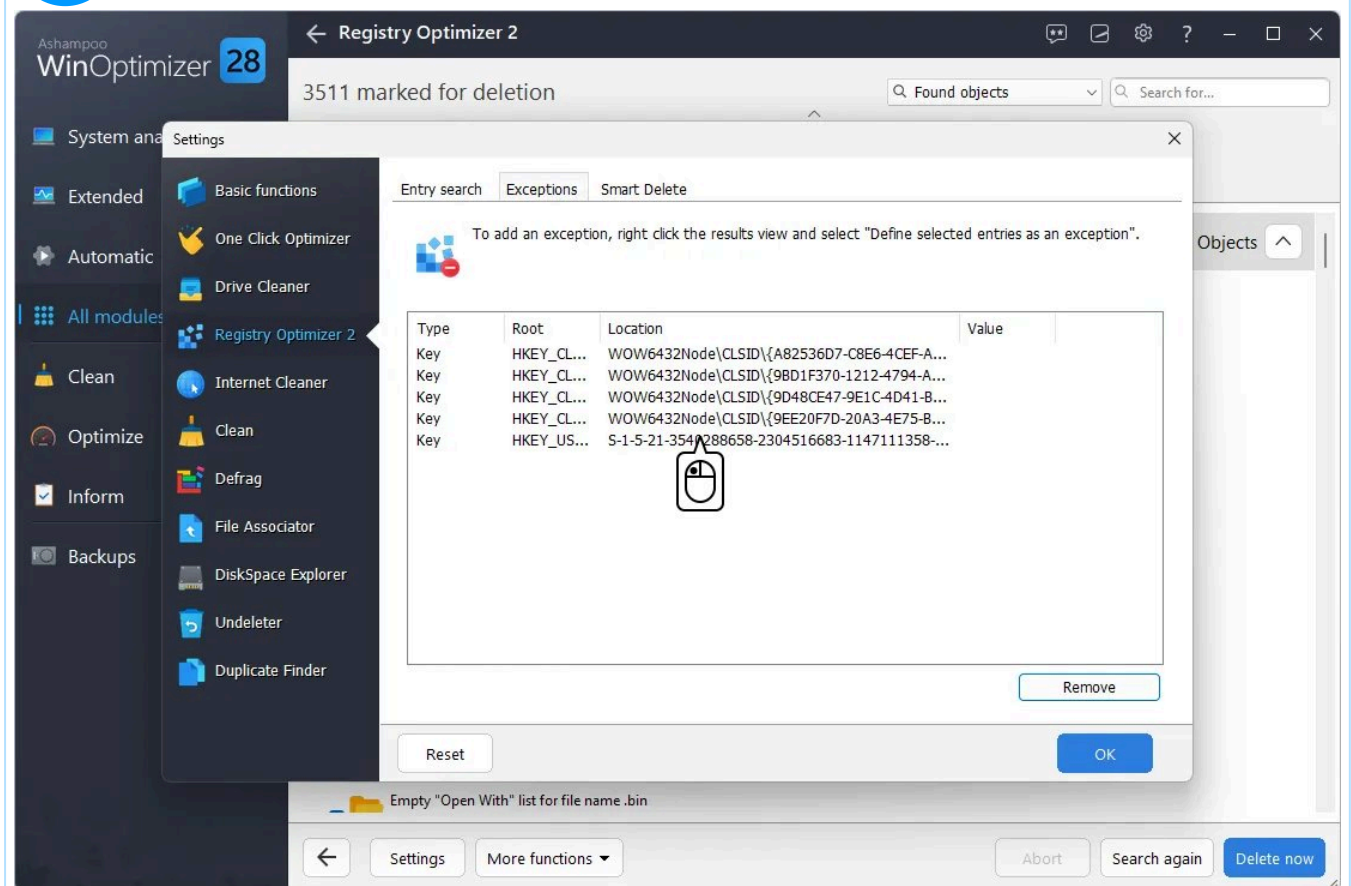
Settings More functions Abort Search again Delete now

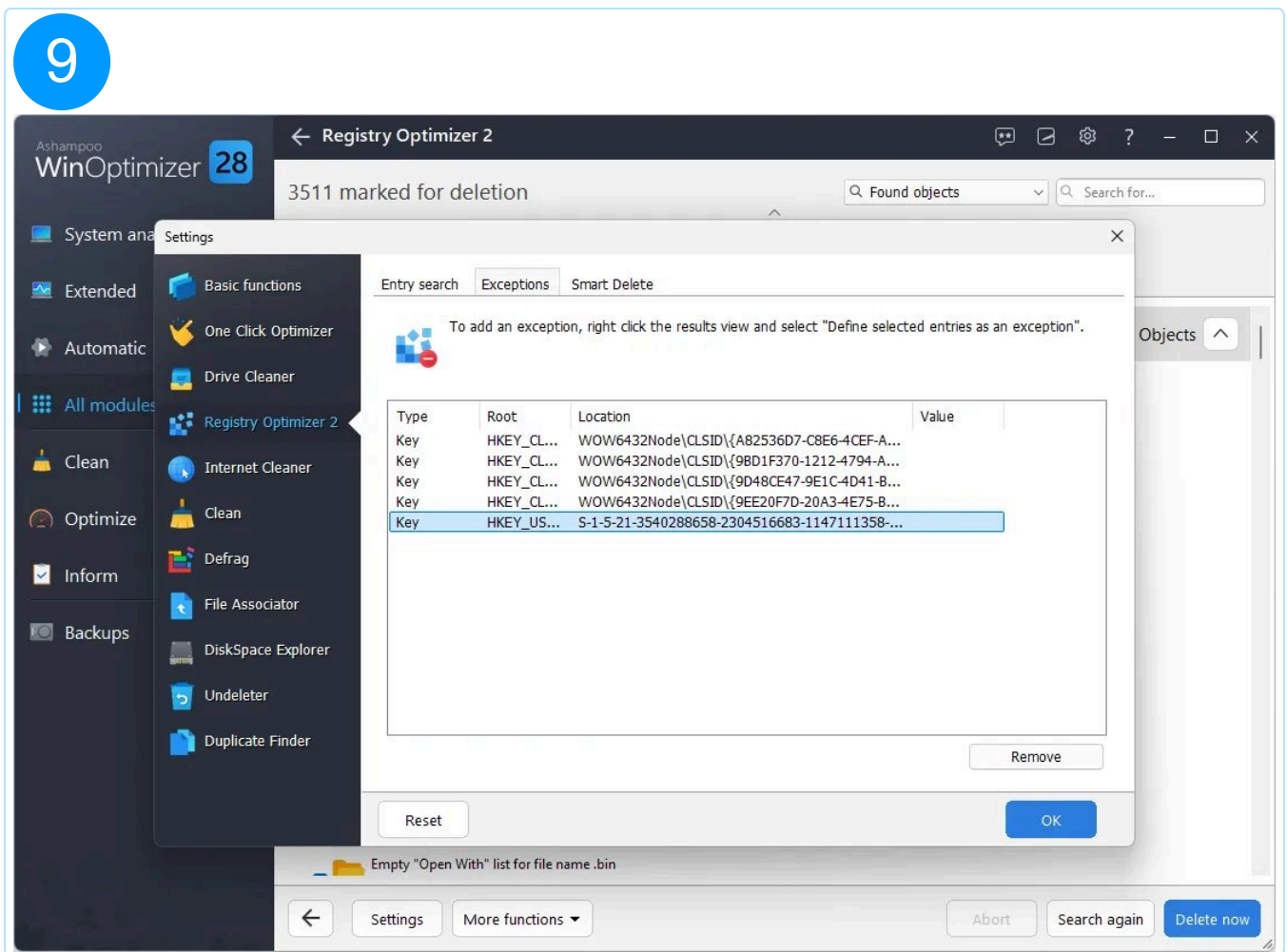


7



8





## 6.4 Internet Cleaner

Internet Cleaner scans your system for no longer needed Internet-related files and displays results grouped by categories.

### Secure cookies

Many websites use cookies to store important data, e.g. login credentials, and use them to automatically fill in the data on your next visit. Since Internet Cleaner deletes all cookies, you'll have to reenter the data manually for each affected site, unless you mark the affected cookies as "safe", thereby excluding them from deletion. Note that your settings always apply to all supported browsers.

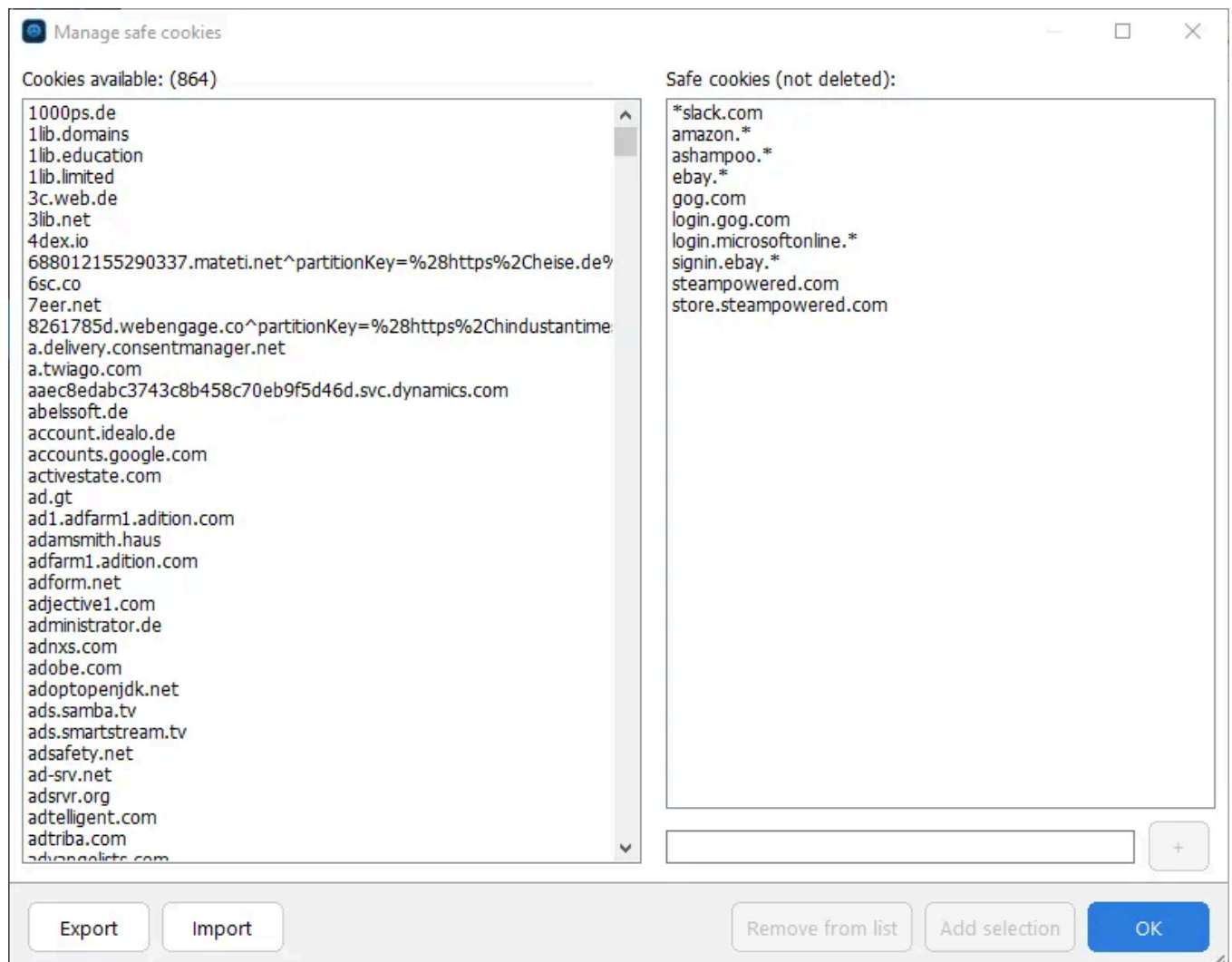
Marking cookies as "secure" via context menu



Right-click a cookie in the list of results to display the context menu and select "Mark selected cookies as Secure Cookies":

## Specifying safe cookies manually

You can use the "Manage safe cookies" button to manually add URLs of cookies of which will then be considered safe.



Existing cookies are listed on the left. Select one or more entries and click "Add selection" to whitelist the affected cookies. You can also add individual URLs, e.g. "ashampoo.\*", using the text field and the plus button. "\*" is a wildcard character and means that all URLs starting with "ashampoo." will be whitelisted.

"Export" and "Import" allows you to export your cookie settings to a text file and import them, e.g. on another PC.

## 6.5 Privacy Traces Cleaner

This module find and eliminates data that poses a potential threat to your privacy. Enable "Search for and clear jumplists" under "Settings" to also delete the list of recently opened files/websites that is displayed when you right-click an application in the task bar.

## 6.6 Defrag

Defrag rearranges file fragments to speed up file access times. It should only be used with mechanical drives. Modern SSDs provide nearly constant access times irrespective of file fragmentation.

### Options

Opens the module settings

### Other actions

#### Merge free disk space

Merges all fragments that make up free space into a single segment for faster access times.

#### Perform retrim

Notifies the controller of the affected SSD about files that have been deleted so that the controller can then physically delete/overwrite the affected disk portions.

#### Rescan drives

Updates the list of available drives. This is useful when you plugged in additional drives after the module was launched.

## 6.7 Registry Defrag

This module defragments the Windows Registry database to speed up your Windows performance. Click "Analyze" to scan all Registry areas and select the areas to be optimized. Then, click "Defragment".

# 7. Improve performance

## 7.1 Service Manager

Services are background programs required by Windows and other applications to work properly. This module lists all installed services and provides a rating on their usefulness. It also allows you to modify start types individually.

### Refresh

Updates the list.

### Download ratings

Use this button to retrieve current ratings in case you disabled auto-downloads.

### Details

Displays details such as service dependencies.

### Start

Starts a service.

## Stop

Stops a service.

## Start type

Allows you to modify the start type of a service.

### Deactivate

The service is permanently disabled. Use the ratings to ascertain whether a service is vital to the functioning of your system first.

### Manual

The service is inactive and started automatically as soon as it is needed.

### Automatic

The service will start with Windows.

### Automatic (delayed)

The service will start once Windows has loaded to avoid slow downs.

## Rate online

Allows you to rate a service. Your rating will be shared with the community to make it available to other WinOptimizer.

## 7.2 Boot Center

This modules not only gives you a detailed overview of processes/services that impact your PC's boot process, including load times, but also the ability to view/edit and enable/disable individual autorun and maintenance-related tasks.

## Overview

This page displays a summary for recorded boot times, autorun entries and tasks.

## Boot time

Boot times analyzed by section are presented here. You can select a log file through the top-right dropdown menu.

## Autorun

This module lists all applications that launch with Windows. Use the check boxes to enable/disable individual entries.

Red entries refer to missing files, e.g. after an incomplete program uninstallation. Select the entry and click "Edit" to review the file path. Run [Registry Optimizer](#) to remove invalid entries automatically.

## Reload

Updates the list of entries.

## Add/Edit

Allows you to add a program to the Windows startup sequence. Either a name and select the EXE file for the program or manually input a command line sequence.

## Delete

Deletes an entry from the Windows startup sequence.

## Enable/Disable

Allows you to enable/disable individual entries, e.g. to check the impact on your boot time prior to deletion.

## Tasks

Use the dropdown menu to filter the tasks by category.

## Reload

Updates the list of entries.

## Delete

Deletes the selected task.

## Enable/Disable

Allows you to enable/disable individual entries, e.g. to check the impact on your boot time prior to deletion.

## Shut down

This section allows you to review the shutdown behavior of your PC. Use the top-right dropdown menu, to select a log file.

# 7.3 Internet Tuner

This module helps you optimize your Internet connection.

## Adjust manually

Experts may adjust individual network parameters manually. Please only use this option if you know what you are doing. Wrong inputs can cause connection drops or other disturbances.

## Auto-optimize now

Select the type of your connection and the affected network adapter. If you are using a very slow connection or your machine is part of a heterogeneous network you should not disable "QoS", otherwise, you can disable this feature to increase network speeds. Click "Adjust automatically" to begin the process.

# 7.4 Process Manager

This module lists all currently running processes and allows you to adjust their priorities or terminate them.

## Details

Displays additional details such as process owner and associated program windows.

## Terminate process

Terminates the selected process. Note that system processes cannot be terminated.

## Modify priority

Allows you to adjust the priority of a process.

## Show

Filters running processes by categories.

## Show load in lower window area

Displays/Hides charts for the overall CPU load and memory consumption of currently running processes.

You can also right-click entries to access various functions.

# 7.5 Uninstall Manager 2

This module allows you to uninstall applications and remove entries for incompletely uninstalled programs.

## Refresh

Updates the list of installed applications.

## Delete entry

Deletes the entry from the list of installed Windows applications. The entry will also no longer show up in Windows' own uninstall dialog.

## Uninstall application



Uninstalls the application from your system.

## 7.6 SSD Wizard

Use these settings to optimize your Windows for SSD drives.

# 8. Customize Windows

## 8.1 Tweaking

Tweaking allows you to customize various system settings. Select the desired category from the entries on the left and use the tabs to navigate through each category. Click "Apply" to apply the changes from all categories and "Restore standard settings" to restore the original settings.

## 8.2 Privacy Manager

Privacy Manager can adjust all Windows settings that collect or share data about you with Microsoft. Select the desired category from the entries on the left and use the tabs to navigate through each category. Click "Apply" to apply the changes from all categories and "Restore standard settings" to restore the original settings. "Restore safe settings" will automatically adjust the settings to avoid the most common security risks.

## 8.3 File Associator

File Associator allows you to associate file types with viewer/editor programs. File types that are currently unassociated are marked red. Click an entry to select it or hold down

Shift to select multiple entries starting with the first selected entry or Ctrl to select multiple entries individually.

## Settings

Opens the module settings.

## Refresh

Updates the list of available file types.

## Undo changes

Restores the original program association for the selected file types-.

## Edit

You can select the icon to be used on the Desktop and Windows Explorer and the viewer/editor for the selected file type here.

## Delete

Deletes the selected file type from your system.

## Apply changes

Applies your modifications.

# 8.4 Context Menu Manager

This module allows you to enable/disable various menu items in Windows' right-click context menu. Use "Activate" and "Disable" to turn individual items on/off or use the check marks. Click "Apply" to apply your modifications and "Properties" for additional details on a selected item.

## 8.5 Browser Extension Manager

This module lists all browser extensions from all browsers in all available user profiles.

### More functions

#### Uninstall

Deletes the selected extension from the affected browser.

#### Search online

Performs a Google search for the selected extension.

#### Rate online

Allows you to rate the usefulness of the extension. Your rating will be submitted online so that other WinOptimizer users can profit from your experience.

#### Download database

Downloads the latest ratings database.

## Display file properties

Displays file properties for the selected extension, if available.

## Open folder

Opens the folder containing the extension in Windows Explorer, if available.

## Refresh

Reloads the list of installed extensions.

# 8.6 Firewall Manager

You can restrict/block incoming/outgoing traffic for individual programs features here.

## Add / Edit rule

Click "Add" to create a new rule. Double-click an existing rule to edit it or hit "Details" to edit the currently selected rule.

Depending on the selected protocol, you may specify individual ports, separated by commas.

# 9. Analyze system

## 9.1 System Information

This module provides various details on your PC hardware and installed applications. Click "Create Report" to display this data in your browser, e.g. to store it as an HTML file and share it with a technical support agent.

## 9.2 DiskSpace Explorer

DiskSpace Explorer analyzes and visualizes the file distribution across your drives, e.g. to track down huge files. Select a drive and click "Start" to begin analyzing. Either double-click a folder on the left to navigate to that folder or double-click a folder in the center view. This allows you to navigate through your folders.

### File allocation by percentages

#### Name

Displays the size of files / folders either relative to the capacity of the host drive or relative to their parent folder. You can change this setting under "Bar in Name column".

#### Size %

Displays the size of files/ folders relative to the capacity of the host drive.

In the above image, the folder "System32" occupies 9.789% of the total available space on drive "C".

#### (Folder) Size

Displays the size of files / folders relative to their parent folder.

In the above image, the folder "System32" occupies 24.280% of the space occupied by the folder "Windows" on drive "C".

## View settings

### Files

This view hides all diagrams.

### Structure

This view displays files and a chart.

### File formats

This view groups files by type, e.g. videos, and displays both a list and chart.

### Bar in "Name" column

#### No bars

Hides the visual representation of space usage.

#### Size relative to current drive

Displays the size of files/ folders relative to the capacity of the host drive.

#### Size relative to folder

Displays the size of files / folders relative to their parent folder.

### Show

Allows you to restrict the display to individual categories.

## Context menu

### Open File

Opens the selected file.

### Show in Explorer

Opens the folder the selected file resides in Windows Explorer.

### Open folder in explorer

Opens the selected folder in Windows Explorer.

### Delete

Deletes the selected file/folder.

## 9.3 Benchmark Center

This module can benchmark the total performance of your PC or individual drives and compare it to other results online. Select a category, click "Run benchmark" to begin benchmarking and "Compare online" to compare your results to other machines.

## 9.4 HDD Inspector

This module displays details on the health of your drives and other information. Use it to determine whether a drive is approaching failure to backup your files on time or get a replacement to prevent data loss.

## Re-scan hard drives

Updates the list of available hard disks.

## Write report

Writes all data to a text file and opens it in your default text editor.

## Status

Displays a summary of the status of the selected drive.

## S.M.A.R.T.

Displays the current S.M.A.R.T. values for the selected drive.

## Information

Shows additional details such as a list of features supported by your drive.

## Analyze allocation

Runs DiskSpace Explorer for the affected drive.



## 9.5 Crash Analyzer

Use this feature to review crash reports for your installed applications. By default, reports are grouped by program name. Use the filter button at the top to adjust the display settings. In group view mode, click the arrow buttons next to the entries to expand them. Double-click a report to open it.

## 9.6 Font Manager

This module lists all installed system fonts.

### Refresh

Updates the list of installed fonts.

### Control Panel

Opens the "Fonts" folder in Windows Explorer.

### View

Displays a detailed preview for the selected font.

### Delete

Deletes the selected font. Note that some applications depend on specific fonts to work properly or at all.

# 10. File tools

## 10.1 File Wiper

When Windows deletes a file, the affected disk space is marked as reusable. As long as it isn't used for new data, the original data is still there and can be recovered easily. FileWiper overwrites these areas with data such as zeros so the data can no longer be recovered. This is especially relevant to Windows' recycle bin as your "deleted" files can otherwise be easily restored.

To permanently delete files in Windows Explorer, right-click the selected files and select "Destroy with Ashampoo WinOptimizer". You can also right-click the recycle bin and select "Destroy content with Ashampoo WinOptimizer" to permanently delete the affected files. WinOptimizer doesn't have to be running for you to use these features.

### Settings

Opens the module settings

### Add

#### Folder

Adds a folder to the list that will be permanently erased.

#### File(s)

Adds one or more files to the list that will be permanently erased.

#### Trashcan contents

Adds the contents of the recycle bin to the list.

### Free disk space

Overwrites free disk space on the selected drive to render previously deleted files/folder unrecoverable.

### Clear list

Deletes all entries from the list.

### Remove from list

Deletes the currently selected entry from the list.

### Abort

Cancels the current operation.

### Wipe data

Overwrites the selected areas permanently.

## 10.2 File Manipulator

File Manipulator allows you to split up files into several parts, e.g. for easier sharing or archiving. It can also reassemble these parts or encrypt/decrypt files.

### Split

Select the file to split and optionally specify an output folder. If no output folder is specified, the parts will be created in the original file folder. Then, select the desired size of

your parts and click "Start" to begin the operation.

## Join

Make sure all required parts reside in the same folder and select one of them. You may optionally specify an output folder for the newly assembled file. If no output folder is specified, the file will be created in the original file folder. Click "Start" to begin the process.

## Encrypt

Select the file to be encrypted and enter the password to be used. If required, you may create a self-extracting archive that can be decrypted on any machine without the use of WinOptimizer. You may optionally select to have the original file deleted once it has been encrypted. Click "Start" to begin the process.

## Decrypt

Select the encrypted file. Then, put in the password you used during the encryption phase and click "Start" to begin the operation.

## Deep scan

Same as "Check now" but also scans unused areas. Depending on the size of your disk, this process may take some time.

## Check now

Scans the selected disk for errors. Only areas that are currently occupied by files will be scanned. The program can try to move files from corrupted to safe areas and will then mark the affected areas as unusable to avoid future data loss.

## Select drive

Select the disk to be scanned here.

## Display log file

Displays a summary of the scan.

## Stop

Cancels the current operation.

# 10.3 Undeleter

Undeleter attempts to recover accidentally deleted files. Simply select a drive and click "Search". Then, select the files to be recovered. Use the search text field to narrow down the list of results and click "Restore" to recover the selected files. Make sure to select a different drive than the source as destination to avoid data loss.

# 10.4 Link Checker

Link Checker validates file shortcuts and can delete invalid items. These shortcuts allow you to access the underlying files via double-clicking, like most of your Desktop icons. Shortcuts become invalid when the underlying file is moved or deleted. In the module, click the check boxes to select/deselect individual entries or use the toolbar.

## Refresh

Updates the list of shortcuts. Click the arrow to adjust additional search parameters.

## Select invalid

Select all invalid shortcuts.

## Select none

Clears the current selection.

## Properties

Displays details such as the target location for the shortcut.

## Delete selected

Deletes the selected shortcuts from your system.

# 10.5 Duplicate Finder

Duplicate Finder scans your drives for duplicate files and lists them side by side. This allows you to find and delete duplicates and regain disk space. Click "Search" to begin the operation. Use the text field to search for individual files and the check boxes to select/deselect individual items. Click "Delete" to delete the selected items from your system. Click "Create report" to create a text file that contains a list of duplicate entries.

Click "Settings" to select the drives to be scanned.

# 10.6 ADS scanner

Alternate data streams (ADS) attach secondary but hidden data streams / files to a file as it is usually shown in Windows Explorer. These streams usually contain additional data used by programs that process the "main" file. However, they can also be used to hide

malware. This module scans the initially selected drive for such streams and allows you to delete them, if needed. Right-click an entry and select "Find online" for additional information on the stream type.

# 11. Administrative tools

## 11.1 Tuning Assistant

Simply answer the questions to create a list of optimization settings tailored to your needs. Click "Optimize now" to apply the settings.

## 11.2 System Restore Manager

This module manages system restore points as created by Windows, e.g. before installing Windows updates. System restore points allow you to revert your machine to a previous state in the event of system errors.

### Refresh

Updates the list of restore points.

### Create new restore point

Creates a new system restore point that holds the current system state.

## Restore

Restores the selected restore point and reverts your system to the previous state.

## Delete

Deletes the restore point from your system.

# 11.3 Icon Saver

Icon Saver saves the position of your desktop icons and can restore their original layout, e.g. after it was altered by newly installed application.

## Refresh

Updates the list of backups.

## Create save point

Saves the current desktop icon layout.

## Delete

Deletes the selected backup.

## Restore

Restores the original icon layout from the selected backup.



## 11.4 User-Rights Manager

Use this module to adjust/restrict user rights, e.g. to keep guests from altering display options or uninstalling applications. It is particularly useful in multi-user environments.

First, select a user from the top left pull-down menu, then select a category from the left. Use the tabs to navigate through a category. Click "Apply restrictions" to apply all modifications to the selected user or "Remove restrictions" to restore the original settings.

## 11.5 Energy Manager

Here, you can adjust existing or create new power schemes. Each scheme offers separate settings for battery and grid operation.

### Other actions

#### **Refresh**

Reloads the list of available power schemes.

#### **Reset power scheme**

Resets the selected power scheme to its original settings.

#### **Restore Windows defaults**

Replaces all existing power schemes with Windows defaults plus the Ashampoo scheme.

#### **Delete power scheme**

Deletes the selected power scheme.

### Copy power scheme

Clones the selected power scheme

### Edit

Edits the selected power scheme

## Activate

Sets the selected power scheme active for

## Edit (power scheme)

This dialog allows you to modify the selected power scheme to your needs. Changes should be made by experienced users only.

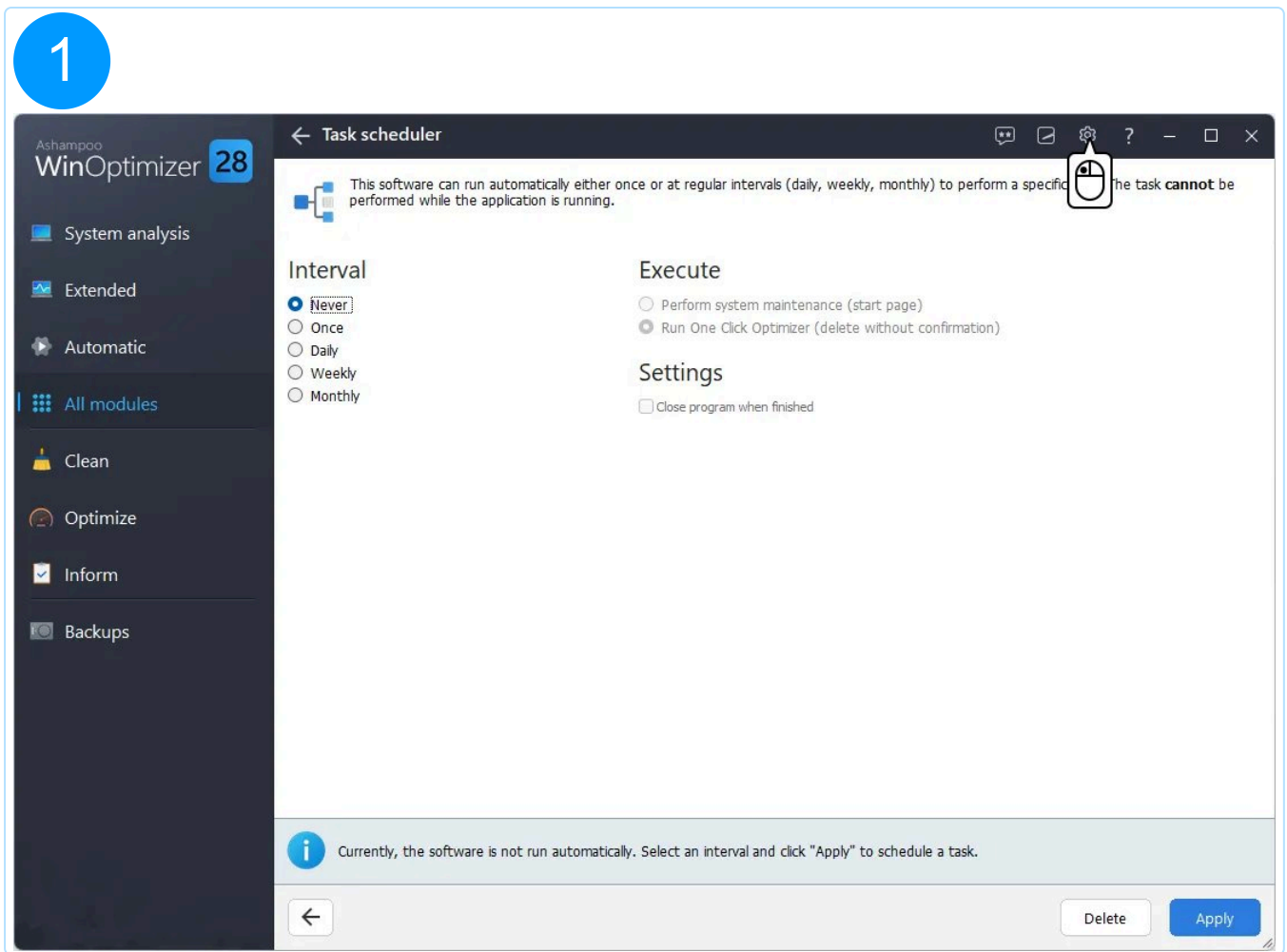
# 11.6 Task scheduler

This module allows you to specify a time when either the system analysis or One Click Optimizer should be run automatically. If needed, the program can shut itself down, once the process is complete.

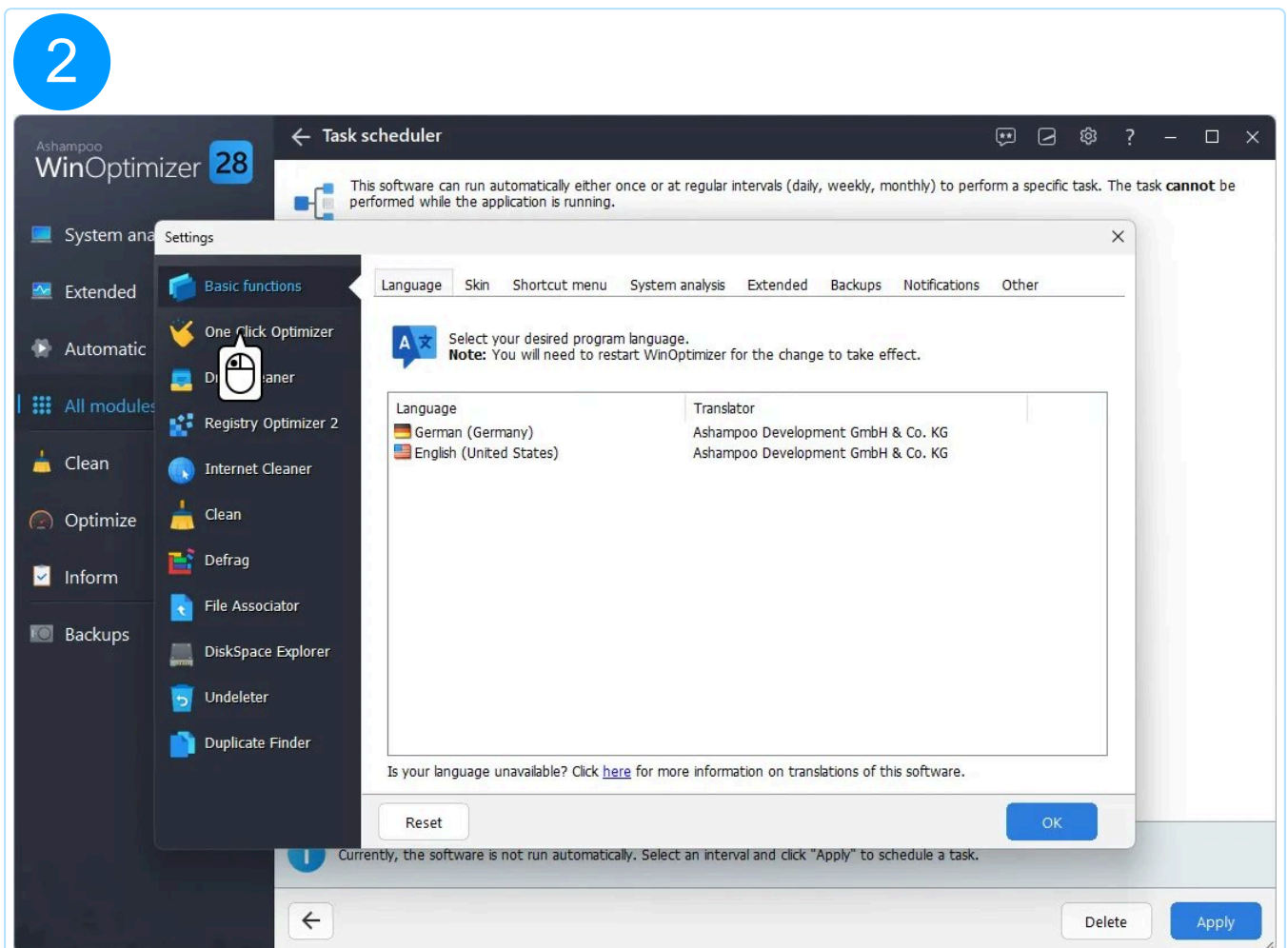
In conjunction with 1-Click Optimizer, this module allows you to specify an interval at which the recycle bin gets emptied.

In the following example, 1-Click Optimizer is scheduled to run daily at 2 pm and to clean the system drive including the recycle bin.

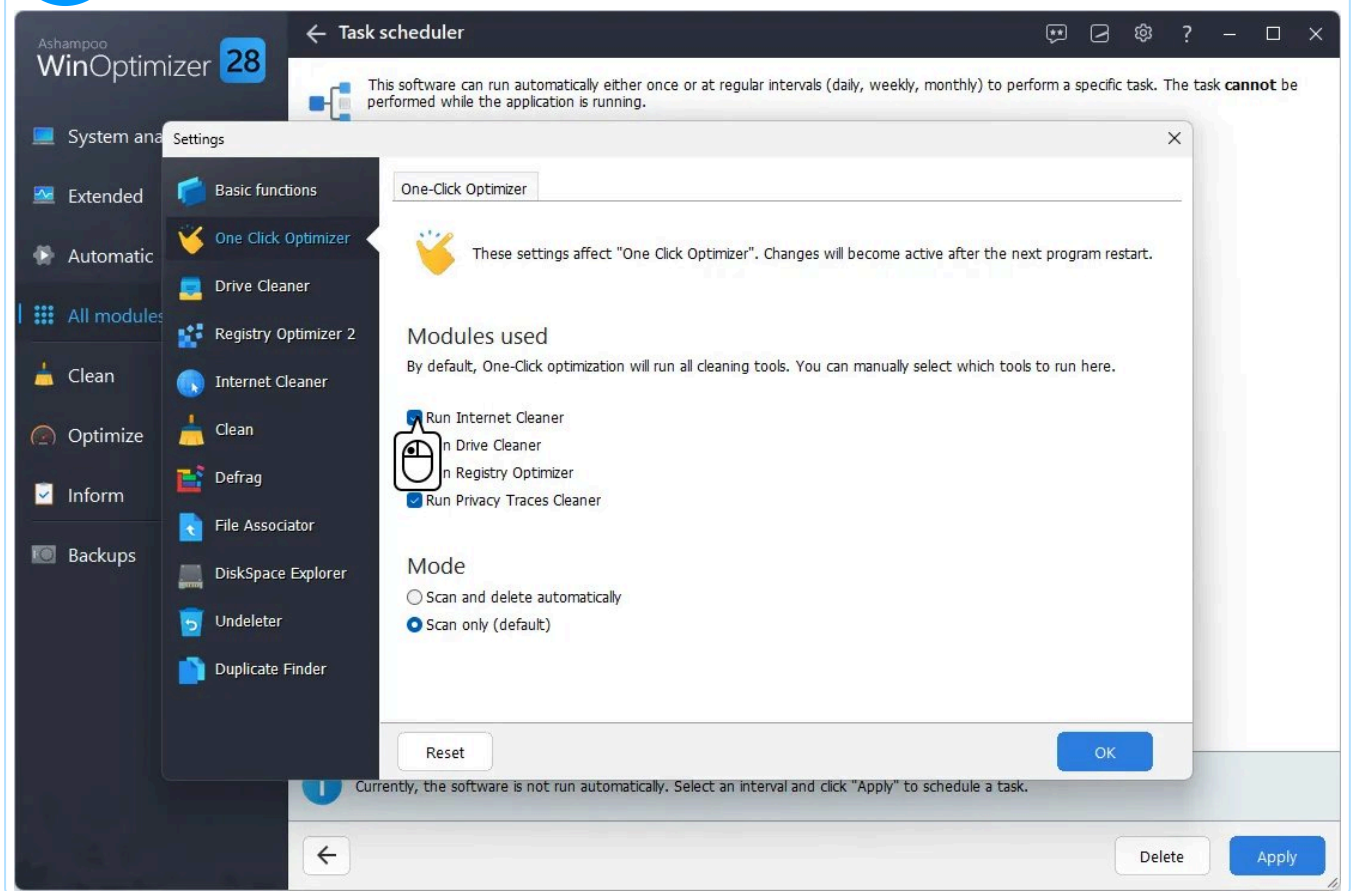
1



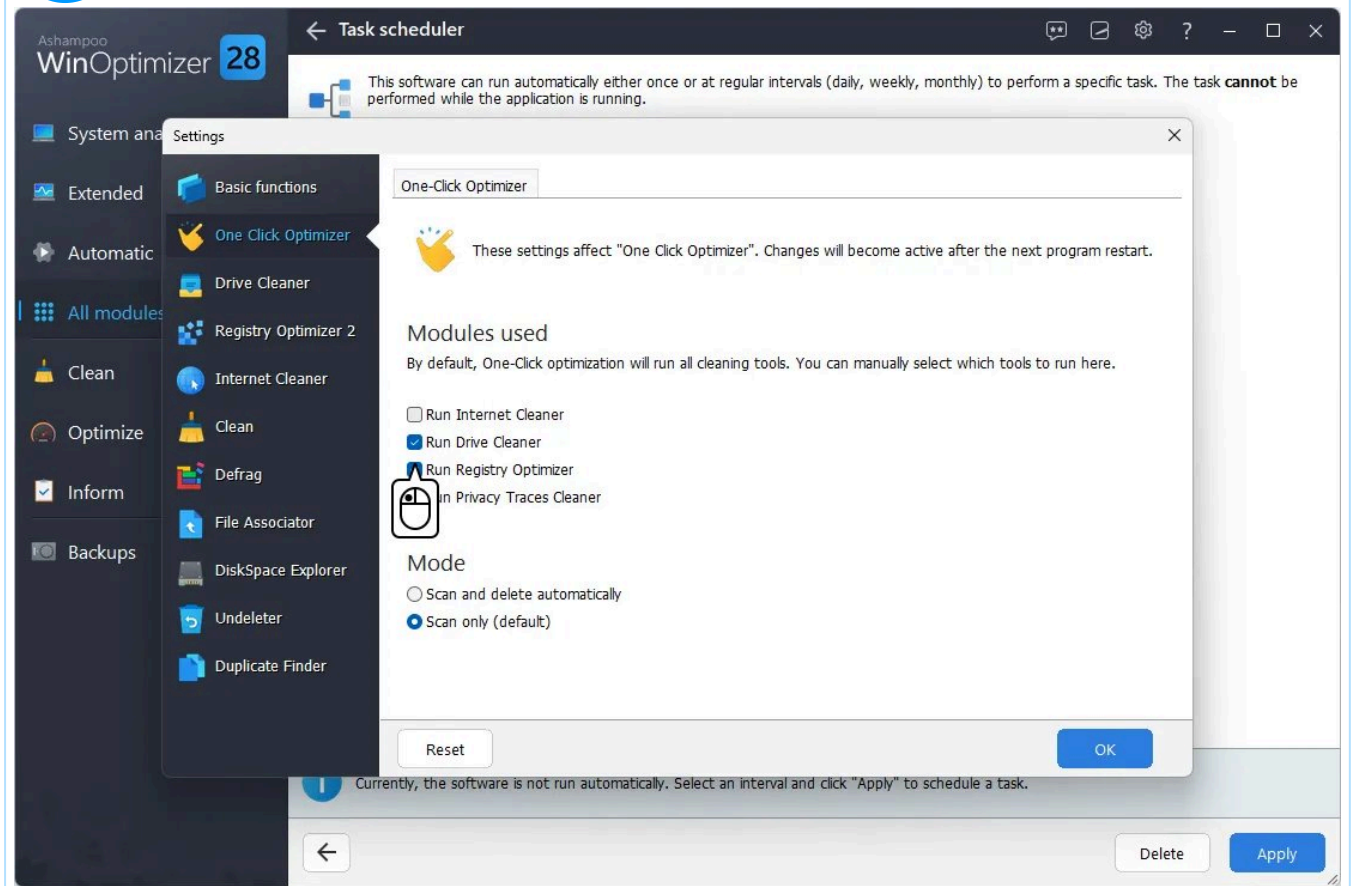
2



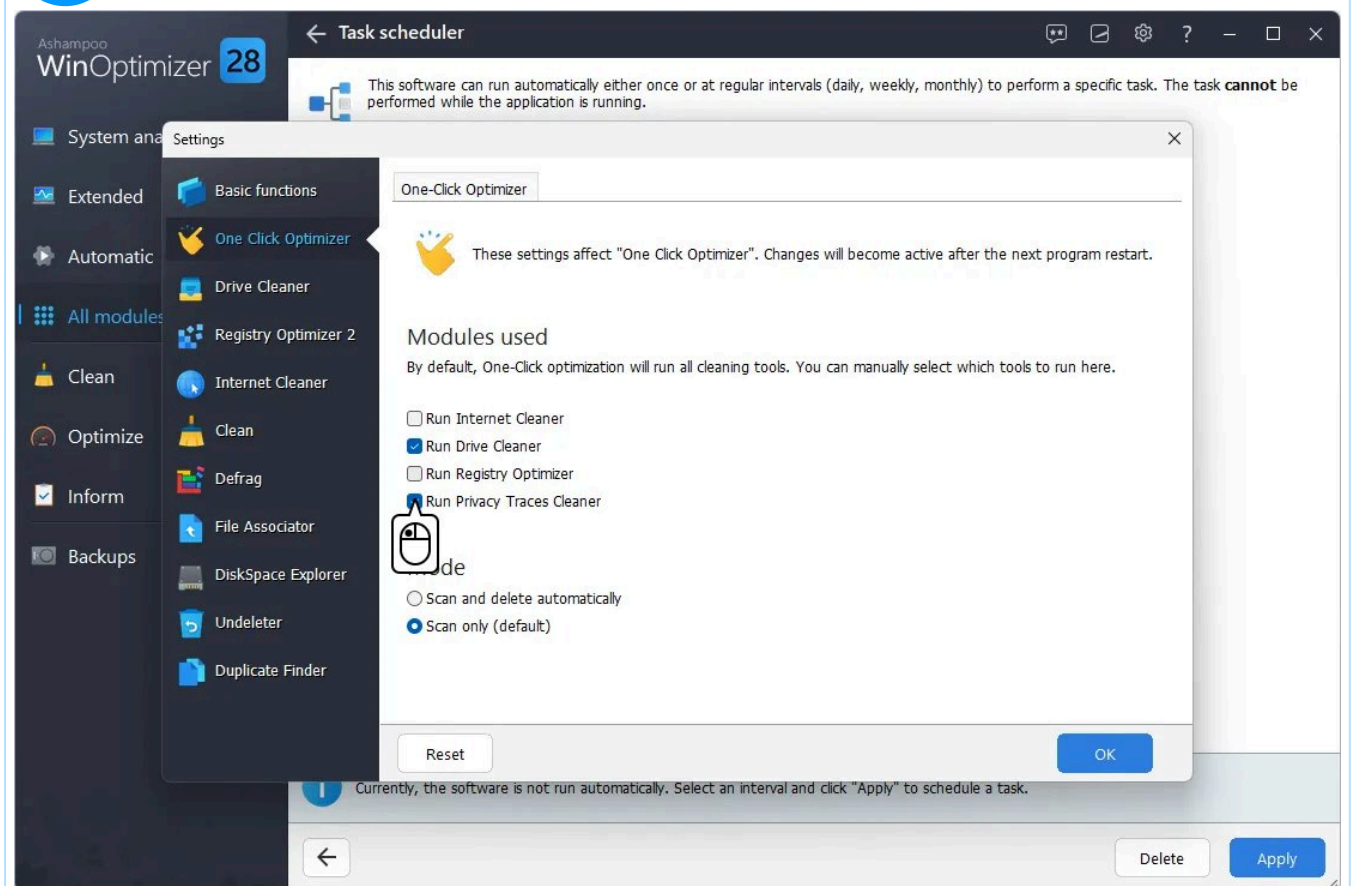
3

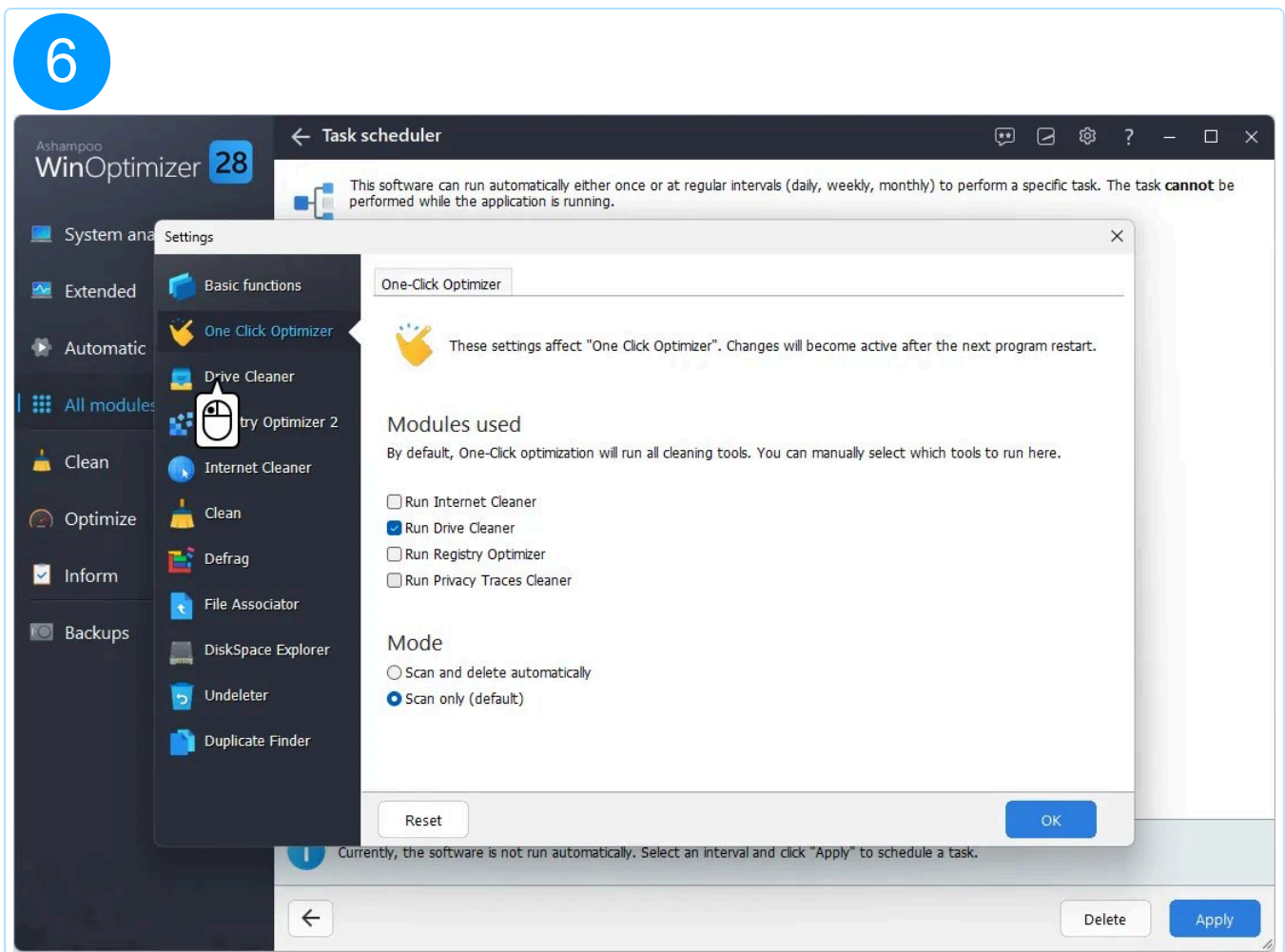


4



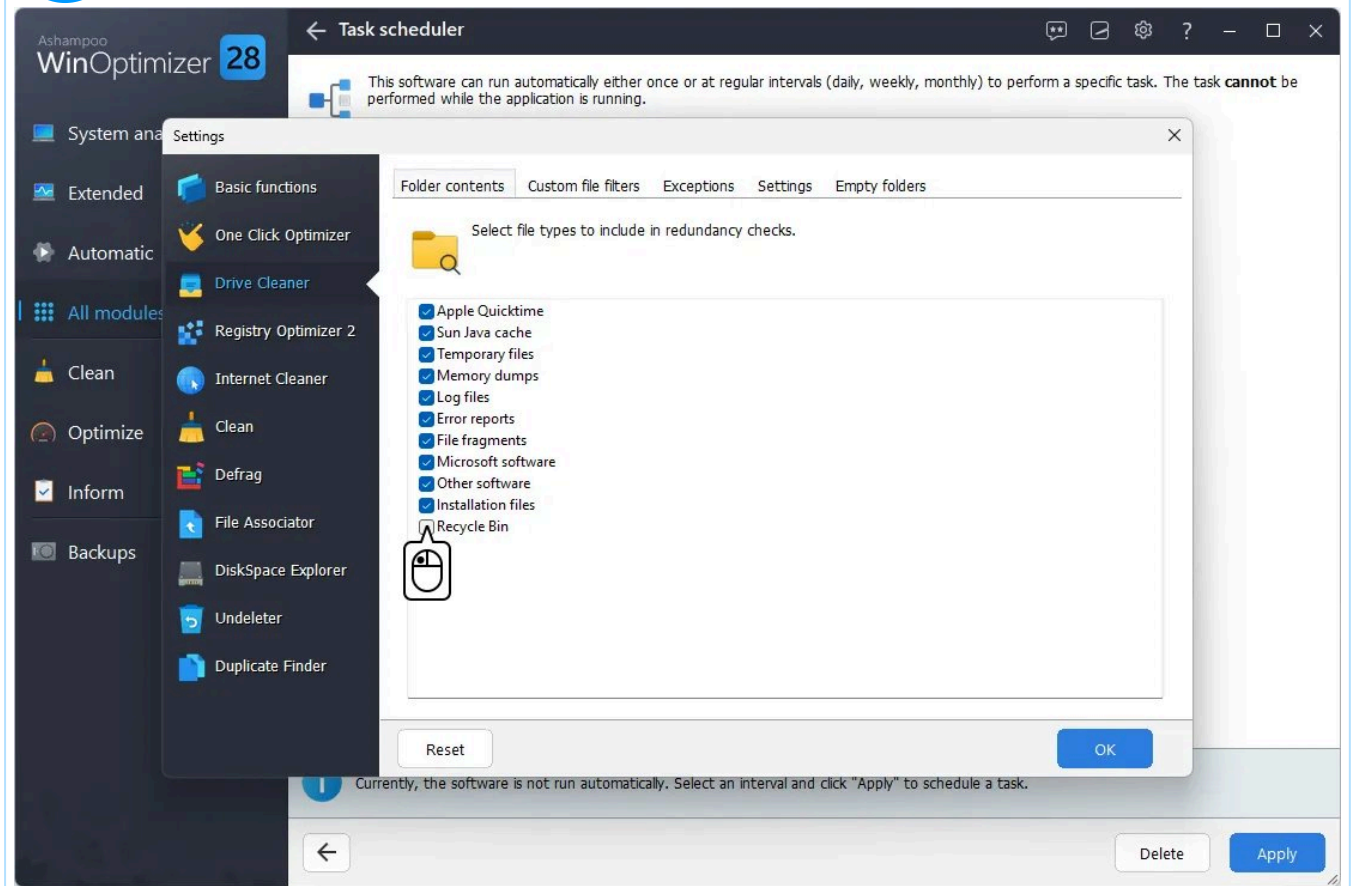
5



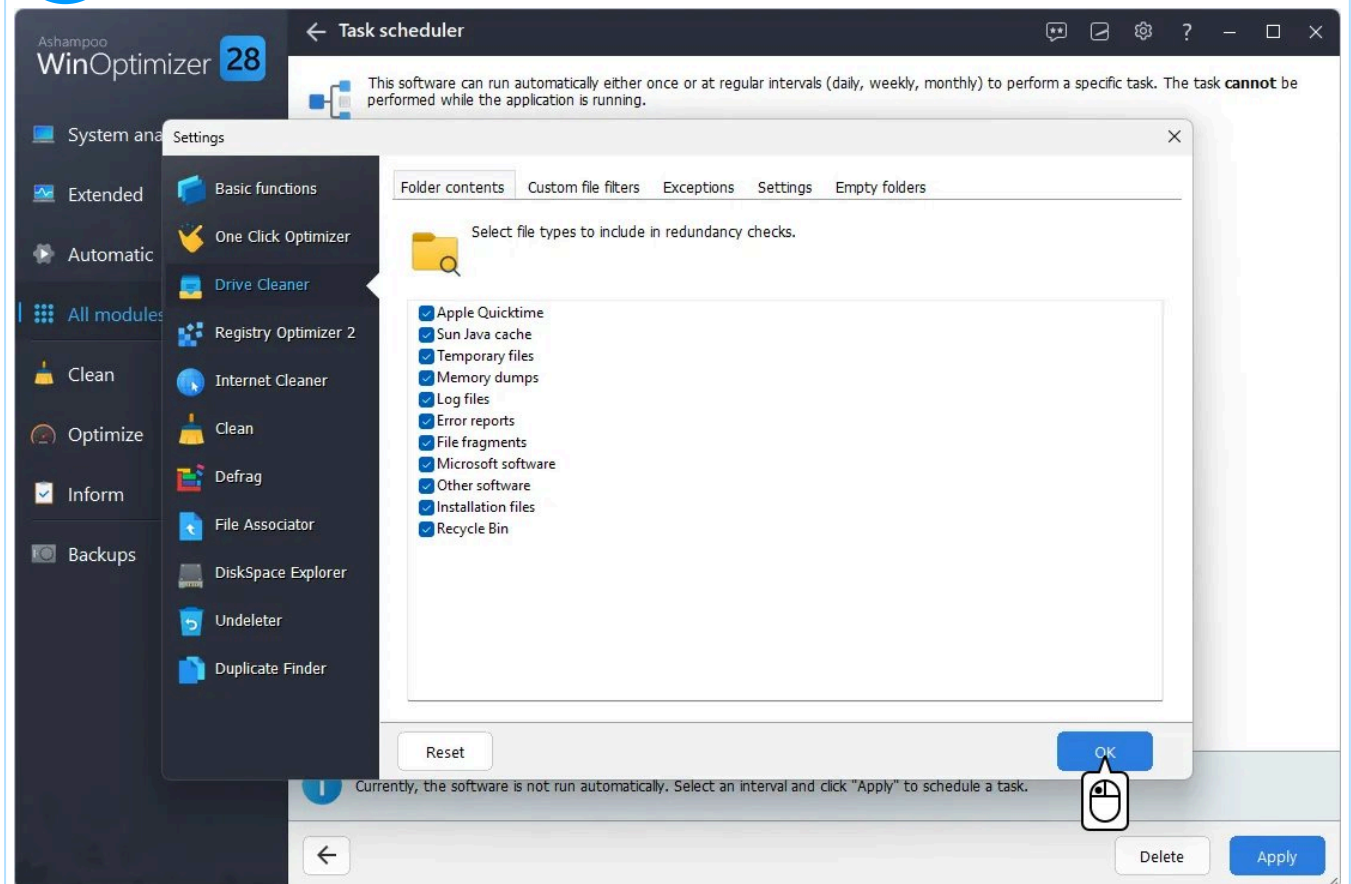




7



8



System analysis

Extended

Automatic

All modules

Clean

Optimize

Inform

Backups

## Task scheduler



This software can run automatically either once or at regular intervals (daily, weekly, monthly) to perform a specific task. The task **cannot** be performed while the application is running.

## Interval

- ☒ Never  
☐ Once  
☐ Daily  
☐ Weekly  
☐ Monthly

## Execute

- ☐ Perform system maintenance (start page)  
☒ Run One Click Optimizer (delete without confirmation)

## Settings

- ☐ Close program when finished



Currently, the software is not run automatically. Select an interval and click "Apply" to schedule a task.



Delete

Apply



System analysis

Extended

Automatic

All modules

Clean

Optimize

Inform

Backups

## Task scheduler



This software can run automatically either once or at regular intervals (daily, weekly, monthly) to perform a specific task. The task **cannot** be performed while the application is running.

## Interval

- ☐ Never  
☐ Once  
☒ Daily  
☐ Weekly  
☐ Monthly

## Execute

- ☐ Perform system maintenance (start page)  
☒ Run One Click Optimizer (delete without confirmation)

## Settings

- ☐ Close program when finished

## Daily

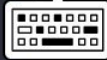
Specify the time during which the task should be executed each day.

Time:

4:00:00 PM

Distance in days (1 = every day)

1



Currently, the software is not run automatically. Select an interval and click "Apply" to schedule a task.



Delete

Apply

System analysis

Extended

Automatic

All modules

Clean

Optimize

Inform

Backups

## Task scheduler



This software can run automatically either once or at regular intervals (daily, weekly, monthly) to perform a specific task. The task **cannot** be performed while the application is running.

## Interval

- ☐ Never  
☐ Once  
☒ Daily  
☐ Weekly  
☐ Monthly

## Execute

- ☐ Perform system maintenance (start page)  
☒ Run One Click Optimizer (delete without confirmation)

## Settings

- ☐ Close program when finished

## Daily

Specify the time during which the task should be executed each day.

Time:

12:00:00 PM

Distance in days (1 = every day)

1



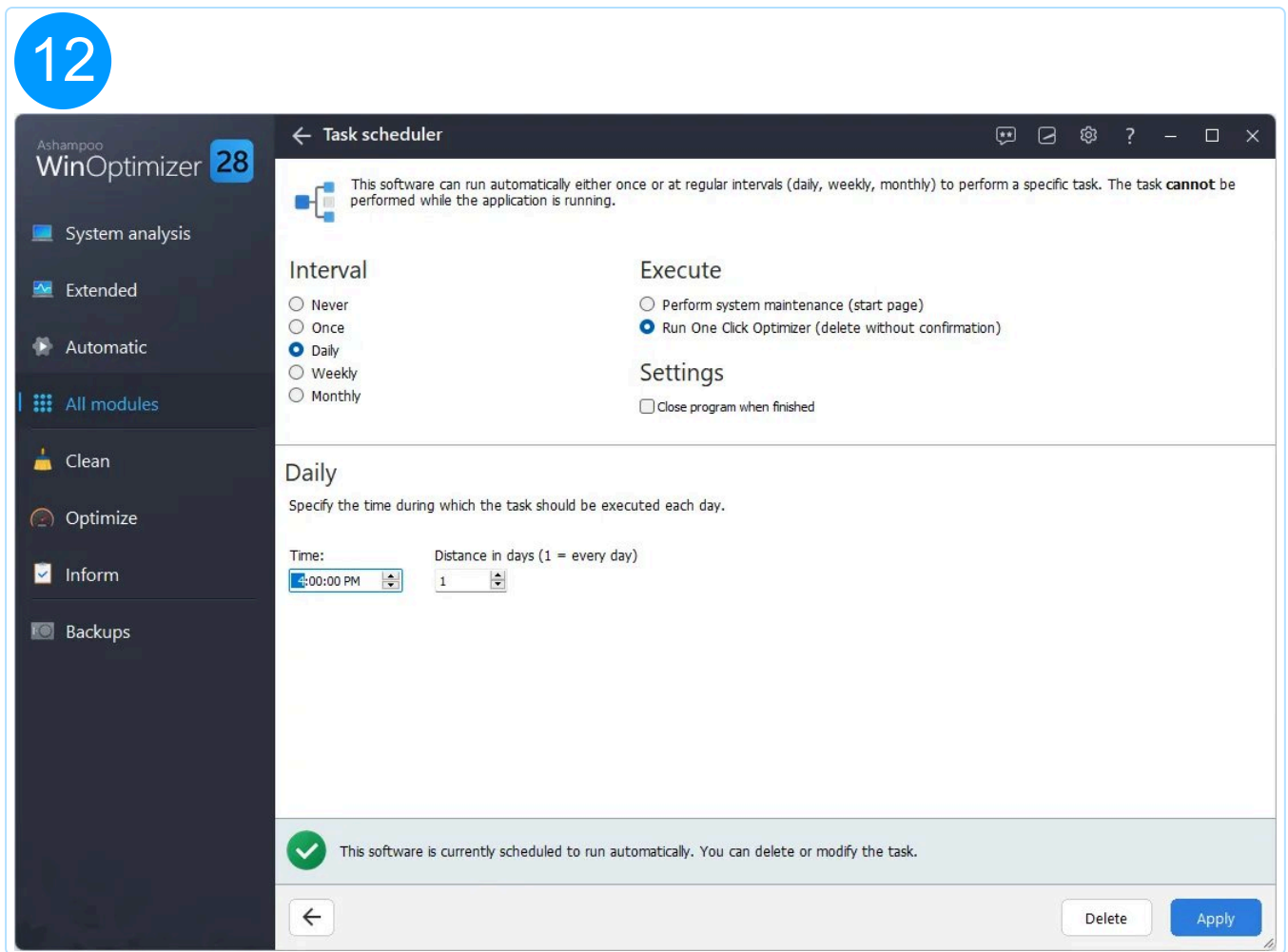
Currently, the software is not run automatically. Select an interval and click "Apply" to schedule a task.



Delete

Apply

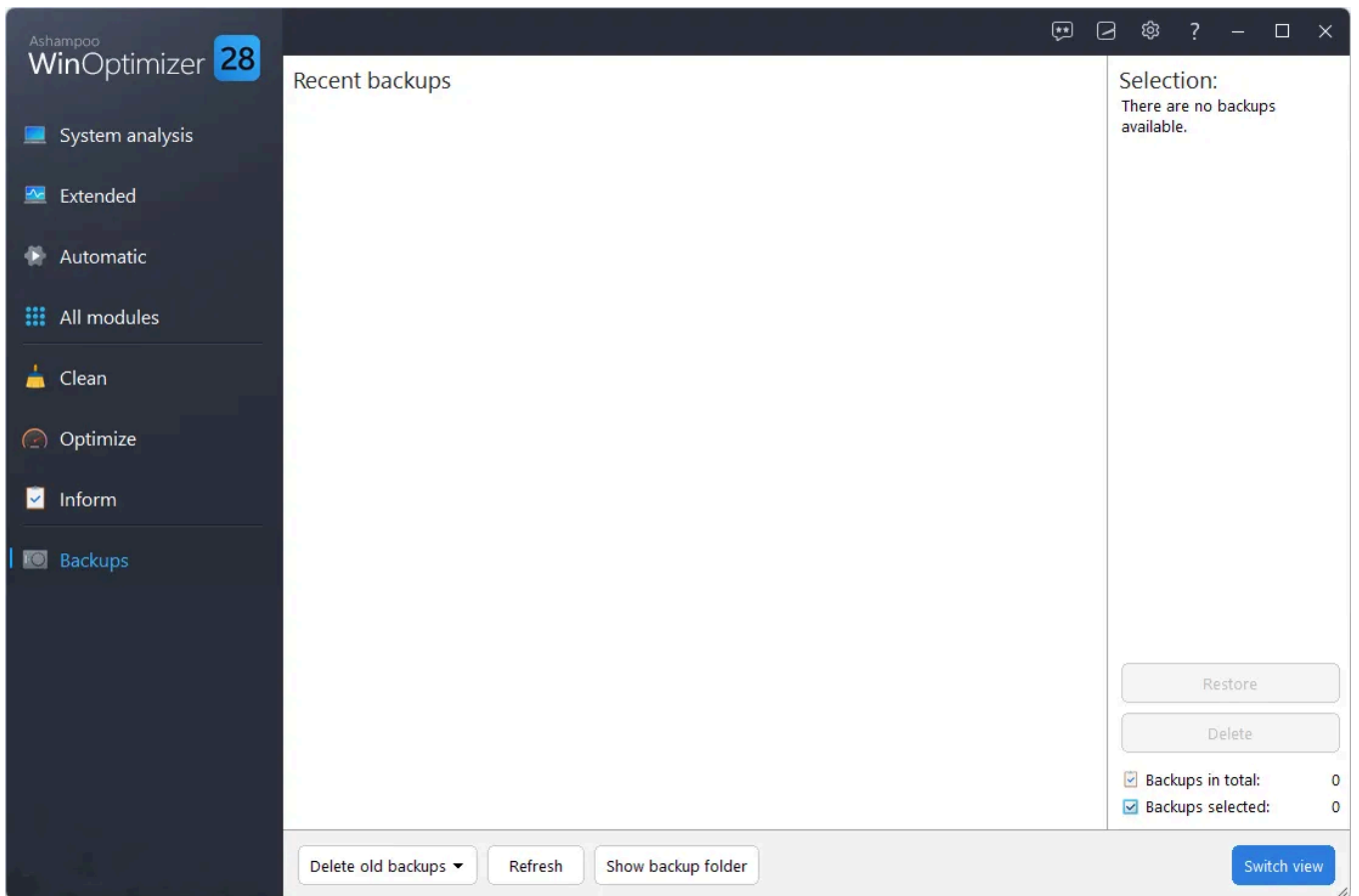




## 11.7 Statistics

This is a summary of all WinOptimizer activities. Click "Rest" to reset all values.

# 12. Backups



Use this module to undo changes made by WinOptimizer, e.g. through Registry Optimizer, should the changes have lead to undesired system behavior.

## Delete old backups

Deletes backups that are older than 7, 14 or 30 days. Click the arrow to select a time interval.

## Refresh

Updates the list of available backups.

## Show backup folder

Opens the backup folder in Windows Explorer.

## Restore

Restores the changes of the selected backup.

## Delete

Deletes the selected backup from your system.

## Switch view

Toggles between a quick overview and a detailed list of your backups.

# | 13. Settings

## 13.1 Basic functions

Use these settings to select a different program language or look.

## 13.2 One Click Optimizer

Select the modules that One Click Optimizer should run and specify whether found issues should be fixed automatically.

## 13.3 Drive Cleaner

Select what information Drive Cleaner should delete and which drives should be scanned. You may also select files/folders to be excluded from scans.

## 13.4 Registry Optimizer

Select which elements to include in scans and whether only local drives should be scanned, e.g. to keep shortcuts to network drives that are currently disconnected. You can also remove exceptions you created using the context menu in Registry Optimizer here.

## 13.5 Internet Cleaner

Select the file types to be deleted for each browser and adjust the list of secure cookies here.

## 13.6 Defrag

Specify the level of fragmentation that will cause Defrag 3 to recommend defragmentation and enable/disable the visual display of file fragmentation here. If needed, you can also activate boot time defragmentation to defragment files usually used by Windows once its launched before the boot process has commenced.

## 13.7 File Associator

These settings affect the formats that will be listed for each filter category. To include a file type, simply add its extension, e.g. ".bak", to the desired category. Use commas to separate multiple formats.

## 13.8 DiskSpace Explorer

Adjust the visual representation of file distribution here. "Number of chart sections" affects, how many parts a diagram, e.g. a pie chart, can consist of. You may furthermore adjust the lists of formats used for each category such as "Audio files" or "Documents" and even create your own custom category/group.

## 13.9 Undeleter

These settings influence the presentation of search results and the handling of folder structures during file restoration.

## 13.10 Duplicate Finder

Select drives that should (not) be scanned for duplicates here and exclude single formats, e.g. ".txt", if needed. You may also select different criteria used to identify duplicates.