



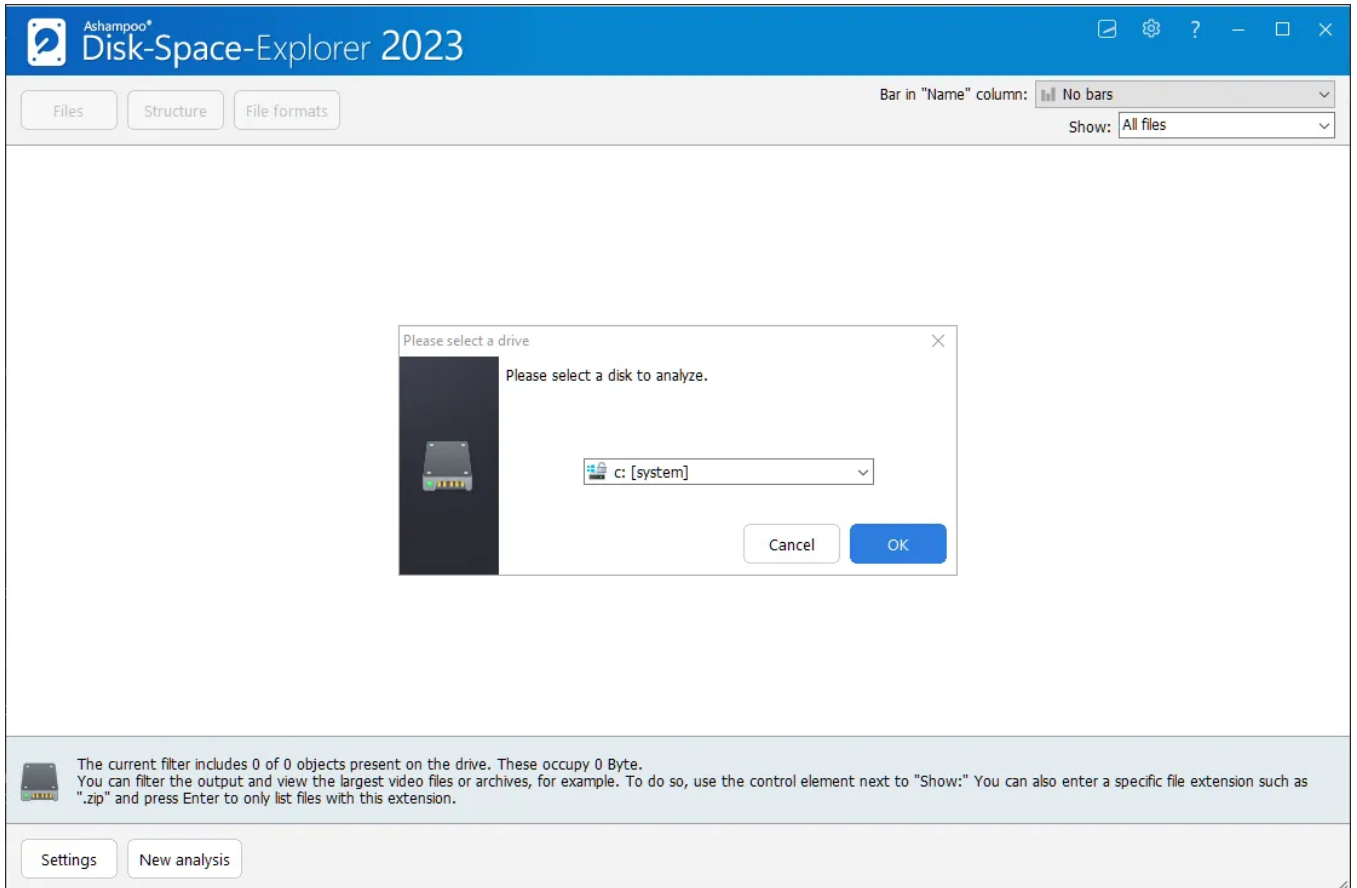
# Manual



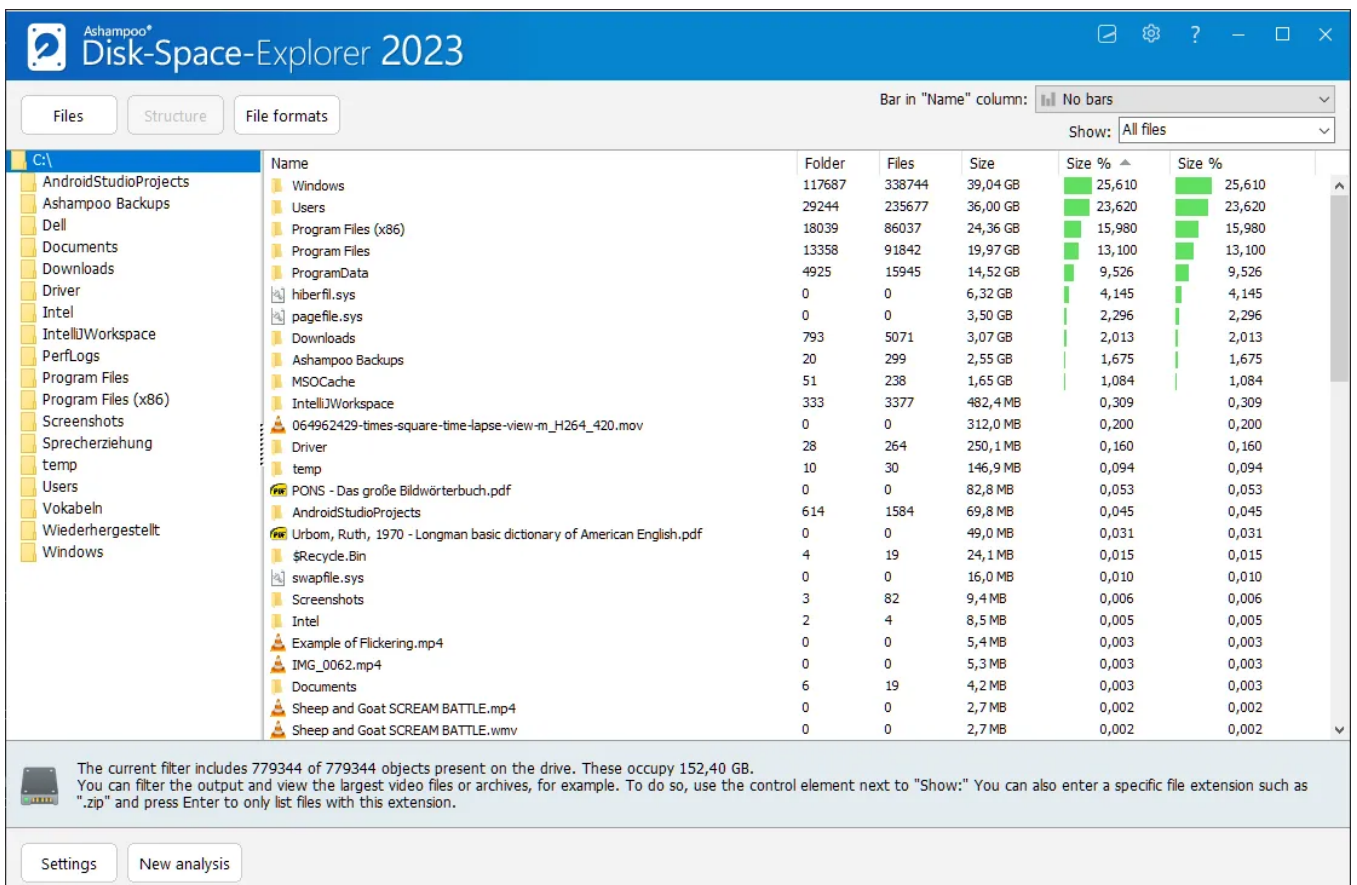
[1. View settings](#)

[2. Context menu](#)

[3. Settings](#)



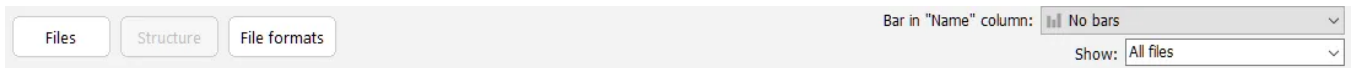
DiskSpace Explorer analyzes and visualizes the file distribution across your drives, e.g. to track down huge files. Select a drive and click "Ok" to begin analyzing.



Either double-click a folder on the left to navigate to that folder or double-click a folder in

the center view. This allows you to navigate through your folders.

# 1. View settings



## Files

This view hides all diagrams.

## Structure

This views displays files and diagrams.

## File formats

This view groups files by type, e.g. videos, and displays both a list and chart view.

## Bar in "Name" column

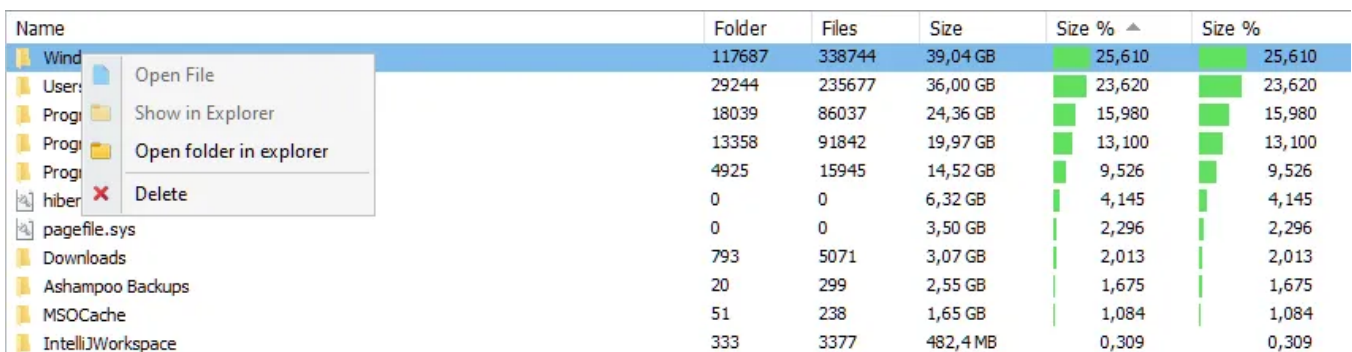
Toggles the visualization of the percentage size of the entries in the "name" column.

## Show

Allows you to restrict the display to individual categories.

# 2. Context menu

Right-click a file/folder in the center view to display the context menu.



The screenshot shows a table with columns: Name, Folder, Files, Size, Size % (with an upward arrow), and Size %. A context menu is open over the 'Wind' folder row. The menu items are: Open File, Show in Explorer, Open folder in explorer, and Delete. The 'Wind' row is highlighted in blue.

Name	Folder	Files	Size	Size % <sup>▲</sup>	Size %
Wind	117687	338744	39,04 GB	25,610	25,610
User:	29244	235677	36,00 GB	23,620	23,620
Prog:	18039	86037	24,36 GB	15,980	15,980
Prog:	13358	91842	19,97 GB	13,100	13,100
Prog:	4925	15945	14,52 GB	9,526	9,526
hiber	0	0	6,32 GB	4,145	4,145
pagefile.sys	0	0	3,50 GB	2,296	2,296
Downloads	793	5071	3,07 GB	2,013	2,013
Ashampoo Backups	20	299	2,55 GB	1,675	1,675
MSOCache	51	238	1,65 GB	1,084	1,084
IntelliJWorkspace	333	3377	482,4 MB	0,309	0,309

## Open File

Opens the selected file.

#### Show in Explorer

Opens the folder the selected file resides in Windows Explorer.

#### Open folder in explorer

Opens the selected folder in Windows Explorer.

#### Delete

Deletes the selected file/folder.

## 3. Settings

### Basic functions

Select the user interface language and configure service news here.

### DiskSpace Explorer

The program comes with six default categories: audio files, video files, image files, archive files, documents, and program files. Each of these categories includes a number of file formats specified by file extension e.g., MP3 for MP3-encoded songs, separated by semicolons. You can customize the categories by adding or removing file extensions. For example, you can add "ODT" to "documents" to include OpenOffice document files in that category in future scans.

You can also create one additional category/group with a custom label using the bottom two text fields. This new category will then be included in future searches:

#### Custom group of file formats

Use group

Label	Software Development
File formats	CS ; CPP ; SWIFT

