

# Manual



## **1. Overview**

- [1.1 1. Navigation](#)
- [1.2 2. Installation monitoring](#)
- [1.3 3. Quick feature access](#)
- [1.4 4. History](#)
- [1.5 Program module structure](#)
- [1.6 Ratings](#)

## **2. Applications**

- [2.1 Post-install logs](#)
- [2.2 Filter](#)
- [2.3 Log file](#)
- [2.4 More functions](#)
- [2.5 Uninstall](#)
- [2.6 Move](#)

## **3. Install**

## **4. Hibernation**

## **5. Windows-Apps**

- [5.1 More functions](#)

## **6. Impact**

## **7. Browser plug-ins**

- [7.1 More functions](#)

## **8. Snapshots**

- [8.1 More functions](#)
- [8.2 Wizard](#)

## **9. Tools**

- [9.1 Drive Cleaner](#)
- [9.2 Registry Optimizer](#)
- [9.3 Internet Cleaner](#)
- [9.4 Boot Center](#)
- [9.5 Service Manager](#)
- [9.6 Undeleter](#)
- [9.7 File Associator](#)
- [9.8 File Wiper](#)
- [9.9 Unlocker](#)
- [9.10 Privacy Traces Cleaner](#)
- [9.11 Crash Analyzer](#)
- [9.12 Backups](#)

## **10. Settings**

UnInstaller makes it incredibly easy to remove programs without leftovers. This is achieved through the integrated installation monitor that creates detailed installation logs.

# 1. Overview



## 1.1 1. Navigation

This section hosts shortcuts to the available program modules. Simply click an entry to jump to the corresponding module.

## 1.2 2. Installation monitoring

Use the switch to enable / disable installation monitoring. If enabled, a new icon will appear in your task tray and UnInstaller will detect and log new installations automatically. Right-click the icon to access the context menu and use "" to manually trigger new installations. Alternatively, you can also left-click the icon.

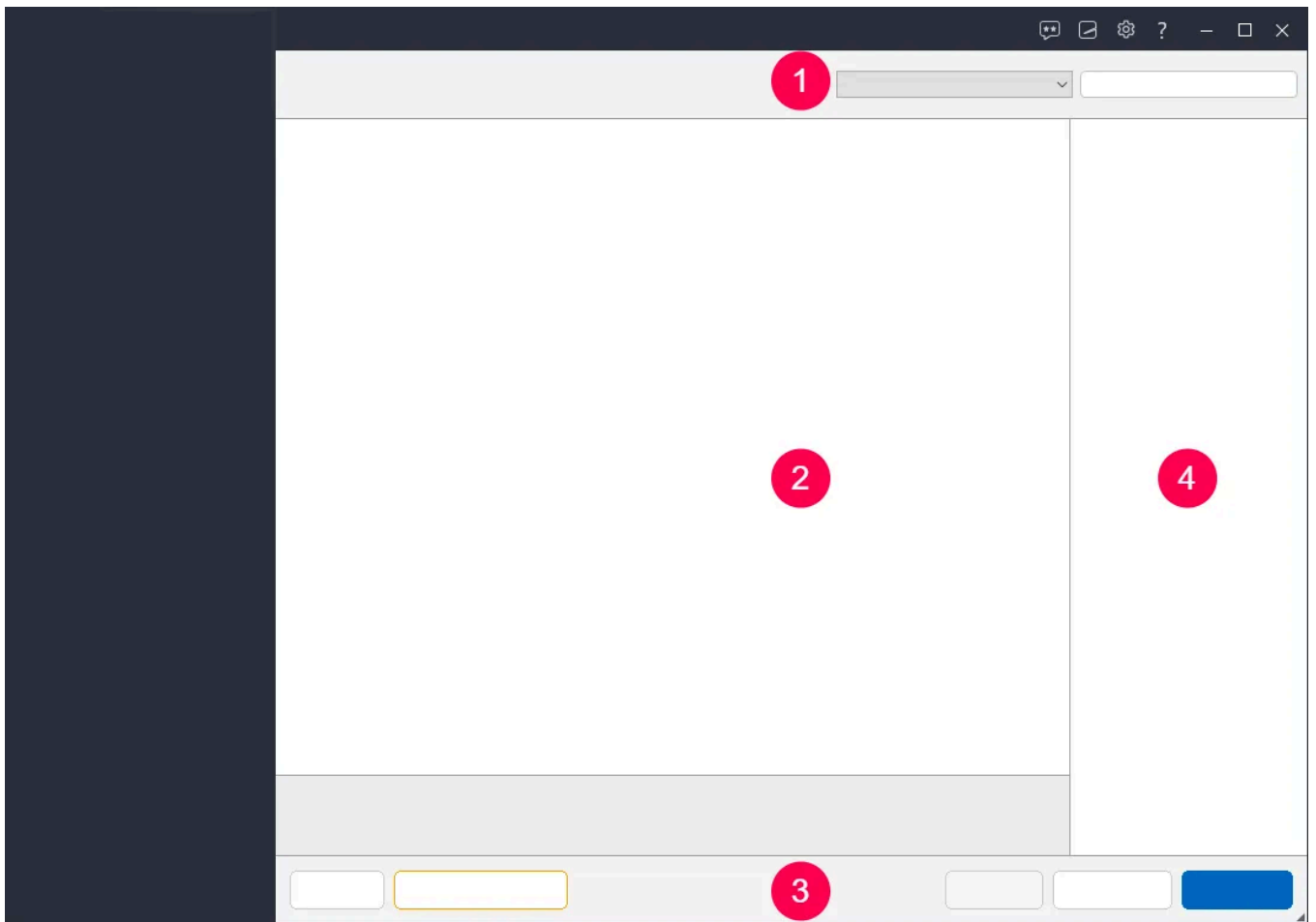
## 1.3 3. Quick feature access

This section provides status information on installed programs, plugins etc. Click the tiles to quickly access the affected program module.

## 1.4 4. History

The most recently installed programs are listed here including uninstall buttons. Tiles for installations that have been monitored with UnInstaller display an additional icon on a blue background.

## 1.5 Program module structure

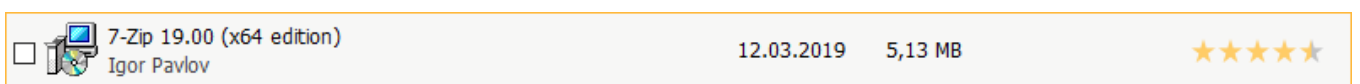


All modules follow a similar structure:

1. A summary of selected entries is displayed at the top along with the ability to filter and search through them.
2. Entries along with details are displayed in the center.
3. Features applicable to said entries are displayed at the bottom.
4. Additional features appear here, if available.

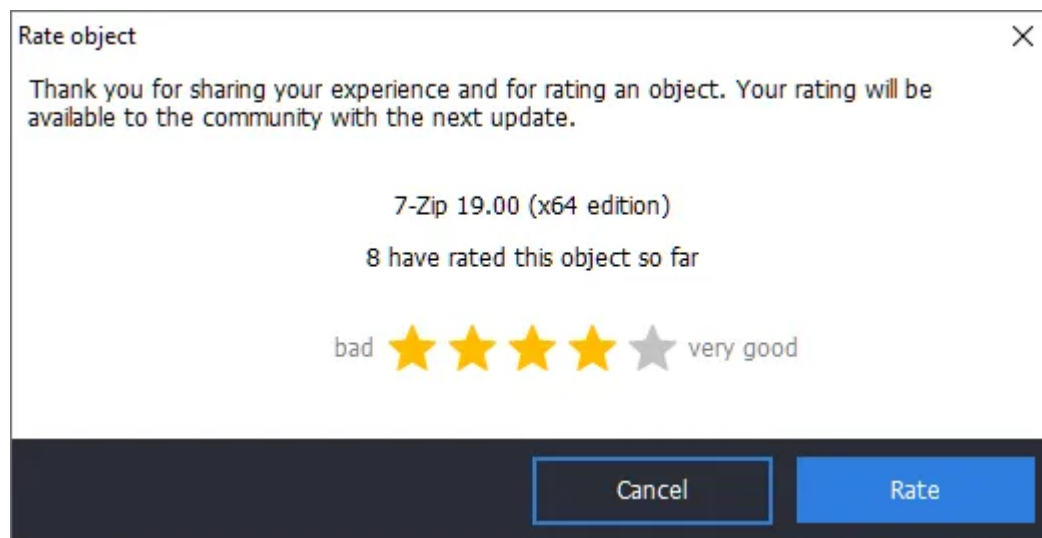
## 1.6 Ratings

Many module support star-based ratings, e.g. to rate the usability of a program.



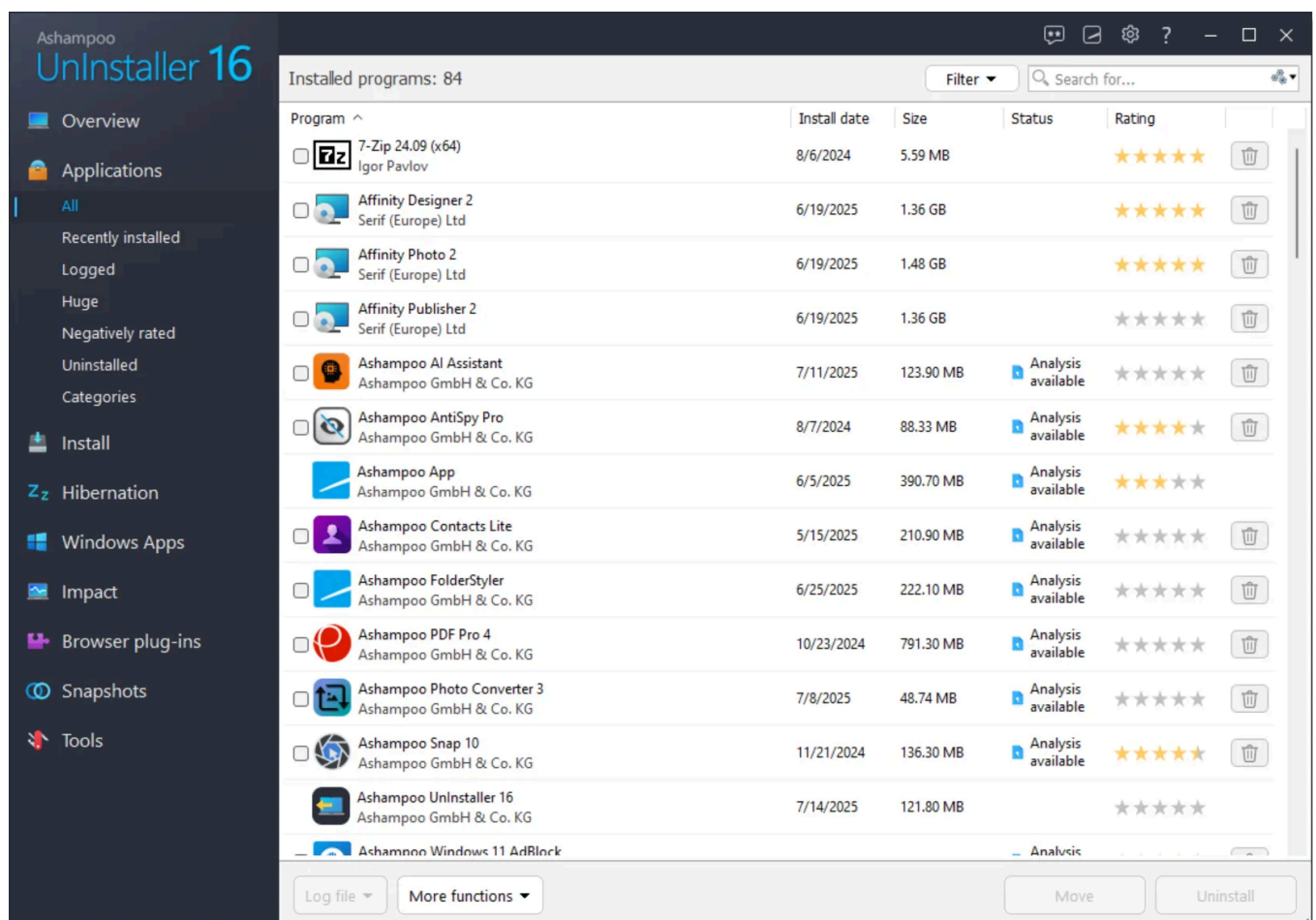
These ratings are based on an online database and are regularly updated through UnInstaller. You can supply your own ratings by clicking the stars to bring up the

corresponding dialog:



Depending on the amount of available ratings, selected stars may appear either blue or yellow.

## 2. Applications



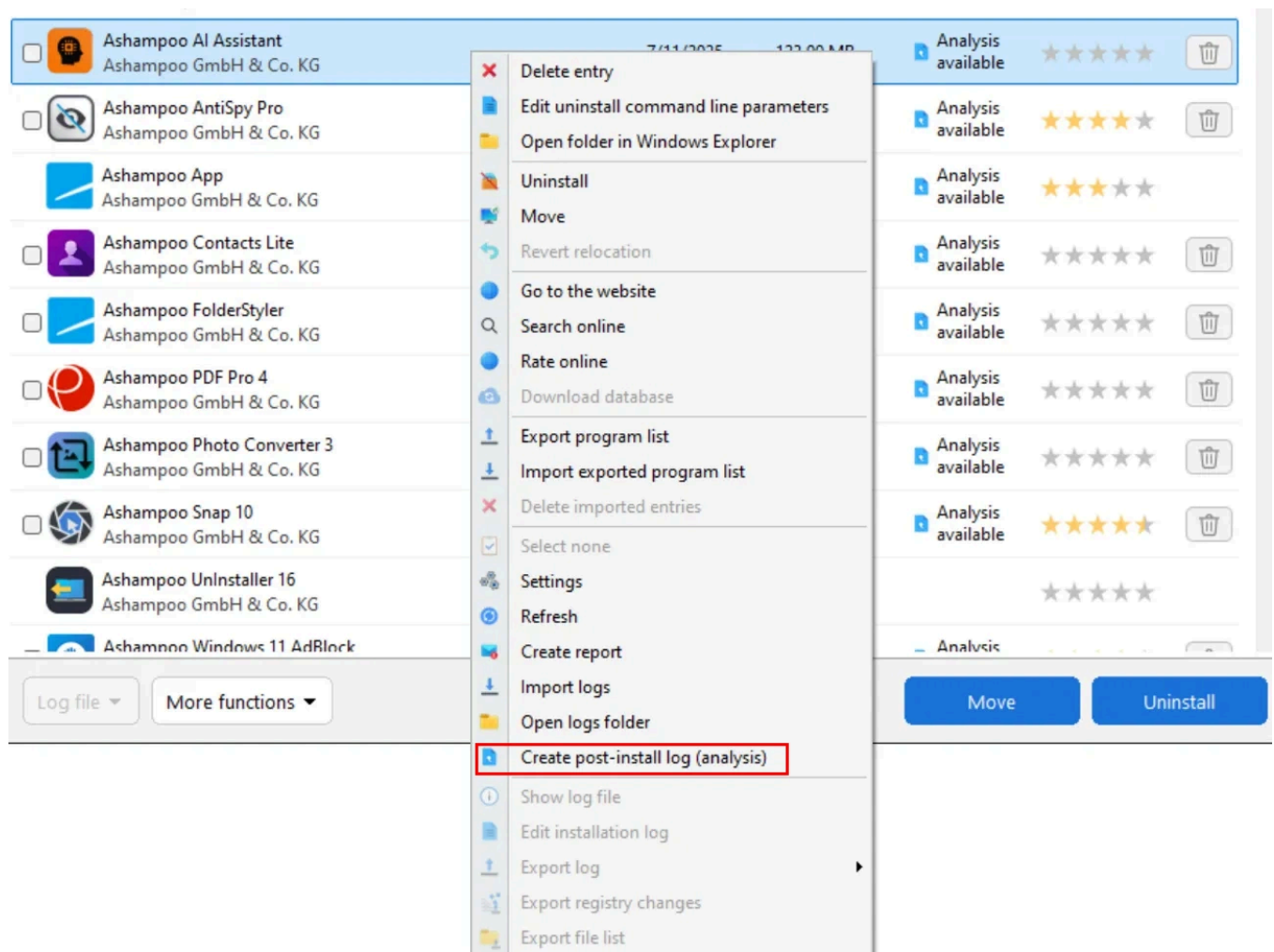
Select "Applications" on the overview page to access the list of applications currently installed on your PC. Use the subtopics to filter the last, e.g. by size. Either click an entry to uninstall the affected program or use the check boxes to uninstall several applications in a row. Click "Uninstall" to remove the selected items from your PC.

You may also uninstall recently installed applications using the corresponding buttons for the list of most recent installations on the overview page.

## 2.1 Post-install logs

Für ohne UnInstaller installierte Programme kannst du durch Analyse, sofern unterstützt, nachträglich ein Installationsprotokoll anlegen lassen. Klicke dafür mit rechts auf ein unterstütztes Programm und wähle "Protokoll nachträglich erstellen" aus.

You can create installation logs for applications that were installed without UnInstaller post-installation by analysis. Right-click a supported application and select "Create post-install log" to analyze it.





## 2.2 Filter

Use the drop-down menu to hide common installation, e.g. the .NET Framework. Use the text field to filter results by specific terms.

## 2.3 Log file

Additional features are availableavailable for log files created with UnInstaller here.

### Show log file

Displays details, e.g. modified registry entries, for the selected installation.

### Export file list

Creates a text file with the paths of all program files for the selected installation.

### Export registry changes

Creates a .reg file with all registry modifications for the selected installation.

### Delete log without uninstalling

Deletes the log file without uninstalling the program. The program can still be uninstalled but will be treated as an "unmonitored" installation.

## 2.4 More functions



## Delete entry

Removes the entry from both the program and the Windows-default overview of installed applications without uninstalling the program.

## Edit uninstall command line parameters

If needed, you can adjust the parameters used with the uninstallation script here.

## Open folder in Windows Explorer

Opens the current program location in Windows Explorer.

## Revert relocation

Moves a relocated program back to its original location.

## Go to the website

Opens the website associated with the program.

## Search online

Performs an online search with the selected entry using your default browser.

## Rate online

You may rate the program on a scale from 1 to 5 stars [here](#). Alternatively, you can also

You may rate the program on a scale from 1 to 5 stars here. Alternatively, you can also click the stars behind a list entry to use this feature.

## Download database

Updates the local ratings database through the Internet.

## Export program list

Exports the list of currently installed programs to a file.

## Import exported program list

Imports a previously exported list of programs. Programs currently not installed on the host system will be marked accordingly. Use this feature on a new PC, or after a Windows reinstallation, to quickly spot programs that have yet to be reinstalled, for example.

## Delete imported entries

Removes all previously imported entries for programs currently not installed on the host system.

## Select none

Deselects all entries.

## Settings

Opens the settings for this program section.

## Refresh

Reloads the list of installed applications.

## Create report

Creates a table view of all installed applications and opens it in the default browser.

## Import logs

Imports UnInstaller 4 log files.

## Open logs folder

Shows the folder containing the log files in Windows Explorer.

## Show log file

Displays the log file created by Ashampoo UnInstaller 16 during the installation of the program.

## Edit installation log

Displays the log file created by Ashampoo UnInstaller 16 during the installation of the program and allows you to manually remove individual entries.

## Export file list

Creates a text file with a list of all file paths created during installation.

## Export Registry changes

Exports all Registry modifications made during installation to a .reg file.

## 2.5 Uninstall

UnInstaller can perform additional in-depth cleaning to remove files created by an application during use. This feature is enabled by default. Usually, UnInstaller detects when the uninstallation process is complete. However, you may have to manually notify the program using the corresponding button in some cases.

### Uninstalled

In the left navigation bar, "Uninstalled" lists all recently uninstalled applications and allows you to either delete the uninstall log file or perform in-depth cleaning, in case you had disabled this feature during the uninstallation.

You can also uninstall programs by dragging their shortcuts onto the "Drag & Drop UnInstall (UI16)" desktop shortcut. UnInstaller will launch automatically in these instances.



## 2.6 Move

Use this feature to move programs to a new location e.g., to free up disk space on the original drive. Associated files will be moved to the new location and a corresponding shortcut will be created in the original folder. This ensures your programs will continue to work as usual.

Relocated programs carry a notification in the "Status" column. Use "Move" on a relocated program, to move it back to its original location.

1

Ashampoo UnInstaller 16

Overview

Applications

All

Recently installed

Logged

Huge

Negatively rated

Uninstalled

Categories

Install

Hibernation

Windows Apps

Impact

Browser plug-ins

Snapshots

Tools

Installed programs: 84

Filter

Search for...

| Program   | Install date | Size      | Status             | Rating |  |
|---|--------------|-----------|--------------------|--------|--|
| <input type="checkbox"/> 7-Zip 24.09 (x64)<br>Igor Pavlov                     | 8/6/2024     | 5.59 MB   |                    | ★★★★★  |  |
| <input type="checkbox"/> Affinity Designer 2<br>Serif (Europe) Ltd            | 6/19/2025    | 1.36 GB   |                    | ★★★★★  |  |
| <input type="checkbox"/> Affinity Photo 2<br>Serif (Europe) Ltd               | 6/19/2025    | 1.48 GB   |                    | ★★★★★  |  |
| <input type="checkbox"/> Affinity Publisher 2<br>Serif (Europe) Ltd           | 6/19/2025    | 1.36 GB   |                    | ★★★★★  |  |
| <input type="checkbox"/> Ashampoo AI Assistant<br>Ashampoo GmbH & Co. KG      | 7/11/2025    | 123.90 MB | Analysis available | ★★★★★  |  |
| <input type="checkbox"/> Ashampoo AntiSpy Pro<br>Ashampoo GmbH & Co. KG       | 8/7/2024     | 88.33 MB  | Analysis available | ★★★★★  |  |
| <input type="checkbox"/> Ashampoo App<br>Ashampoo GmbH & Co. KG               | 6/5/2025     | 390.70 MB | Analysis available | ★★★★★  |  |
| <input type="checkbox"/> Ashampoo Contacts Lite<br>Ashampoo GmbH & Co. KG     | 5/15/2025    | 210.90 MB | Analysis available | ★★★★★  |  |
| <input type="checkbox"/> Ashampoo FolderStyler<br>Ashampoo GmbH & Co. KG      | 6/25/2025    | 222.10 MB | Analysis available | ★★★★★  |  |
| <input type="checkbox"/> Ashampoo PDF Pro 4<br>Ashampoo GmbH & Co. KG         | 10/23/2024   | 791.30 MB | Analysis available | ★★★★★  |  |
| <input type="checkbox"/> Ashampoo Photo Converter 3<br>Ashampoo GmbH & Co. KG | 7/8/2025     | 48.74 MB  | Analysis available | ★★★★★  |  |
| <input type="checkbox"/> Ashampoo Snap 10<br>Ashampoo GmbH & Co. KG           | 11/21/2024   | 136.30 MB | Analysis available | ★★★★★  |  |
| <input type="checkbox"/> Ashampoo UnInstaller 16<br>Ashampoo GmbH & Co. KG    | 7/14/2025    | 121.80 MB |                    | ★★★★★  |  |
| <input type="checkbox"/> Ashampoo Windows 11 AdBlock                          |              |           | Analysis available | ★★★★★  |  |

Log file

More functions

Move

Uninstall

Ashampoo

## UnInstaller 16

Overview

Applications

All

Recently installed

Logged

Huge

Negatively rated

Uninstalled

Categories

Install

Hibernation

Windows Apps

Impact

Browser plug-ins

Snapshots

Tools

Installed programs: 84

Filter

Search for...

| Program ^   | Install date | Size      | Status             | Rating |  |
|---|--------------|-----------|--------------------|--------|--|
| <input type="checkbox"/> 7-Zip 24.09 (x64)<br>Igor Pavlov                     | 8/6/2024     | 5.59 MB   |                    | ★★★★★  |  |
| <input type="checkbox"/> Affinity Designer 2<br>Serif (Europe) Ltd            | 6/19/2025    | 1.36 GB   |                    | ★★★★★  |  |
| <input type="checkbox"/> Affinity Photo 2<br>Serif (Europe) Ltd               | 6/19/2025    | 1.48 GB   |                    | ★★★★★  |  |
| <input type="checkbox"/> Affinity Publisher 2<br>Serif (Europe) Ltd           | 6/19/2025    | 1.36 GB   |                    | ★★★★★  |  |
| <input type="checkbox"/> Ashampoo AI Assistant<br>Ashampoo GmbH & Co. KG      | 7/11/2025    | 123.90 MB | Analysis available | ★★★★★  |  |
| <input type="checkbox"/> Ashampoo AntiSpy Pro<br>Ashampoo GmbH & Co. KG       | 8/7/2024     | 88.33 MB  | Analysis available | ★★★★★  |  |
| <input type="checkbox"/> Ashampoo App<br>Ashampoo GmbH & Co. KG               | 6/5/2025     | 390.70 MB | Analysis available | ★★★★★  |  |
| <input type="checkbox"/> Ashampoo Contacts Lite<br>Ashampoo GmbH & Co. KG     | 5/15/2025    | 210.90 MB | Analysis available | ★★★★★  |  |
| <input type="checkbox"/> Ashampoo FolderStyler<br>Ashampoo GmbH & Co. KG      | 6/25/2025    | 222.10 MB | Analysis available | ★★★★★  |  |
| <input type="checkbox"/> Ashampoo PDF Pro 4<br>Ashampoo GmbH & Co. KG         | 10/23/2024   | 791.30 MB | Analysis available | ★★★★★  |  |
| <input type="checkbox"/> Ashampoo Photo Converter 3<br>Ashampoo GmbH & Co. KG | 7/8/2025     | 48.74 MB  | Analysis available | ★★★★★  |  |
| <input type="checkbox"/> Ashampoo Snap 10<br>Ashampoo GmbH & Co. KG           | 11/21/2024   | 136.30 MB | Analysis available | ★★★★★  |  |
| <input type="checkbox"/> Ashampoo UnInstaller 16<br>Ashampoo GmbH & Co. KG    | 7/14/2025    | 121.80 MB |                    | ★★★★★  |  |
| <input type="checkbox"/> Ashampoo Windows 11 AdBlock                          |              |           | Analysis           |        |  |

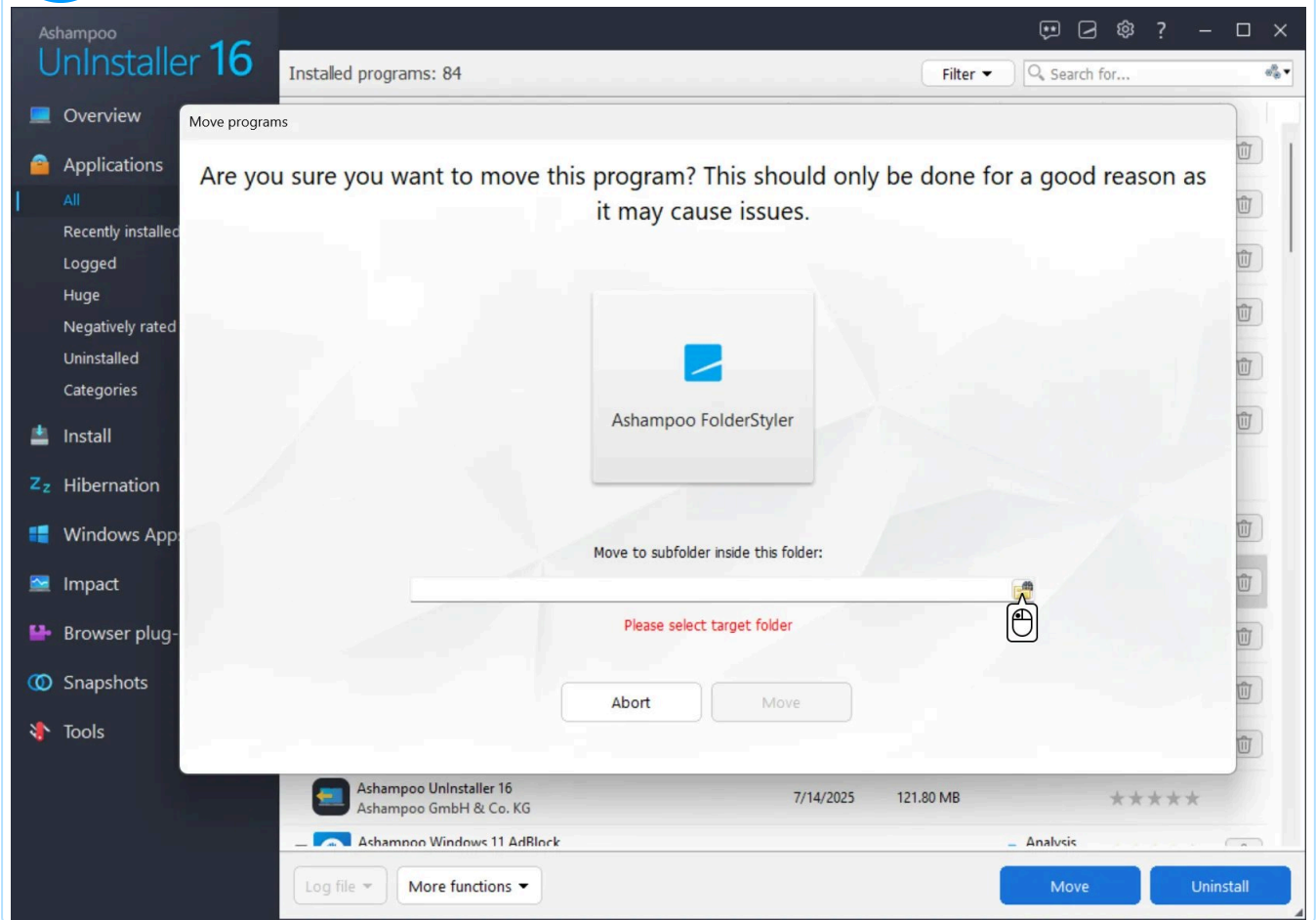
Log file

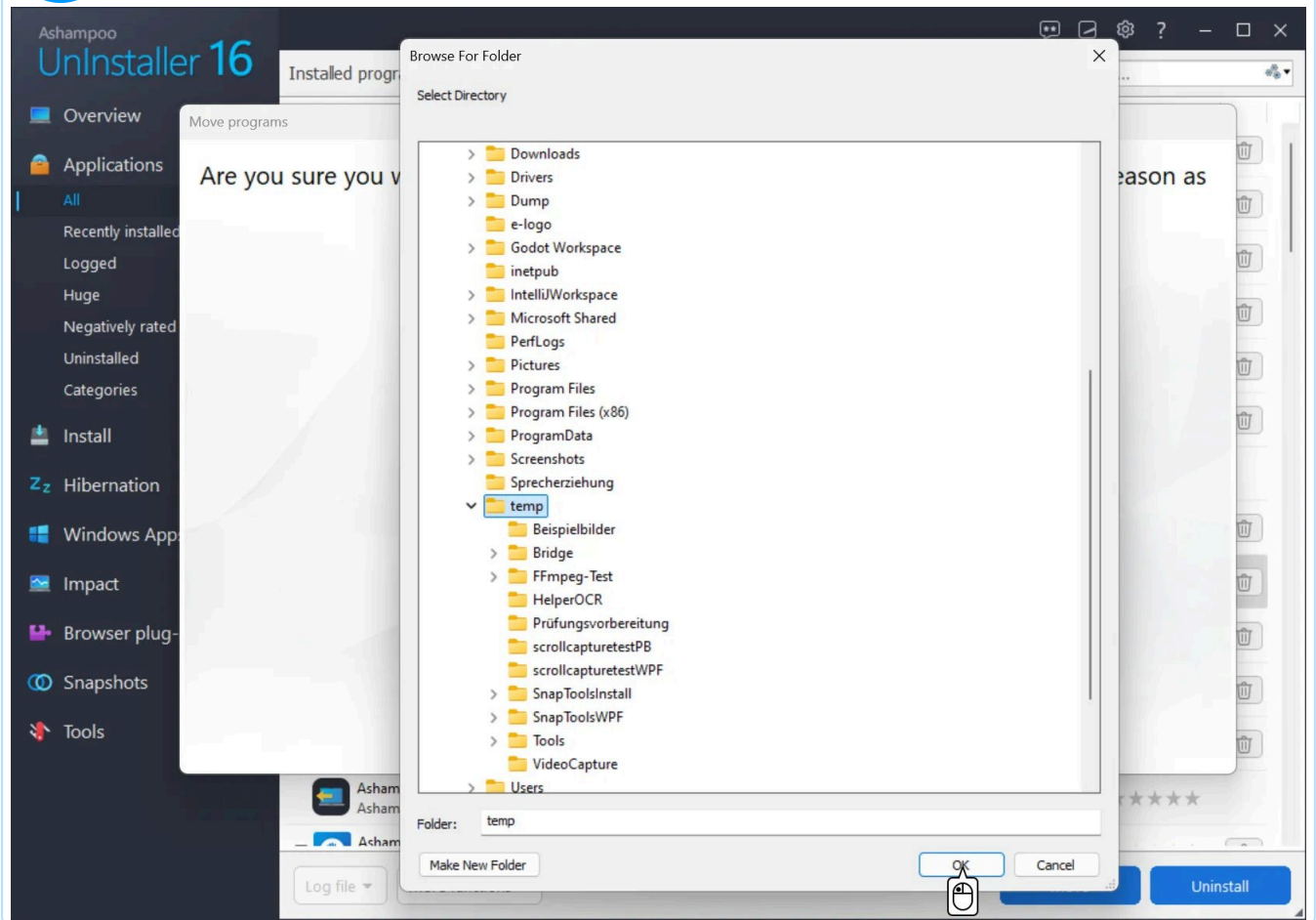
More functions

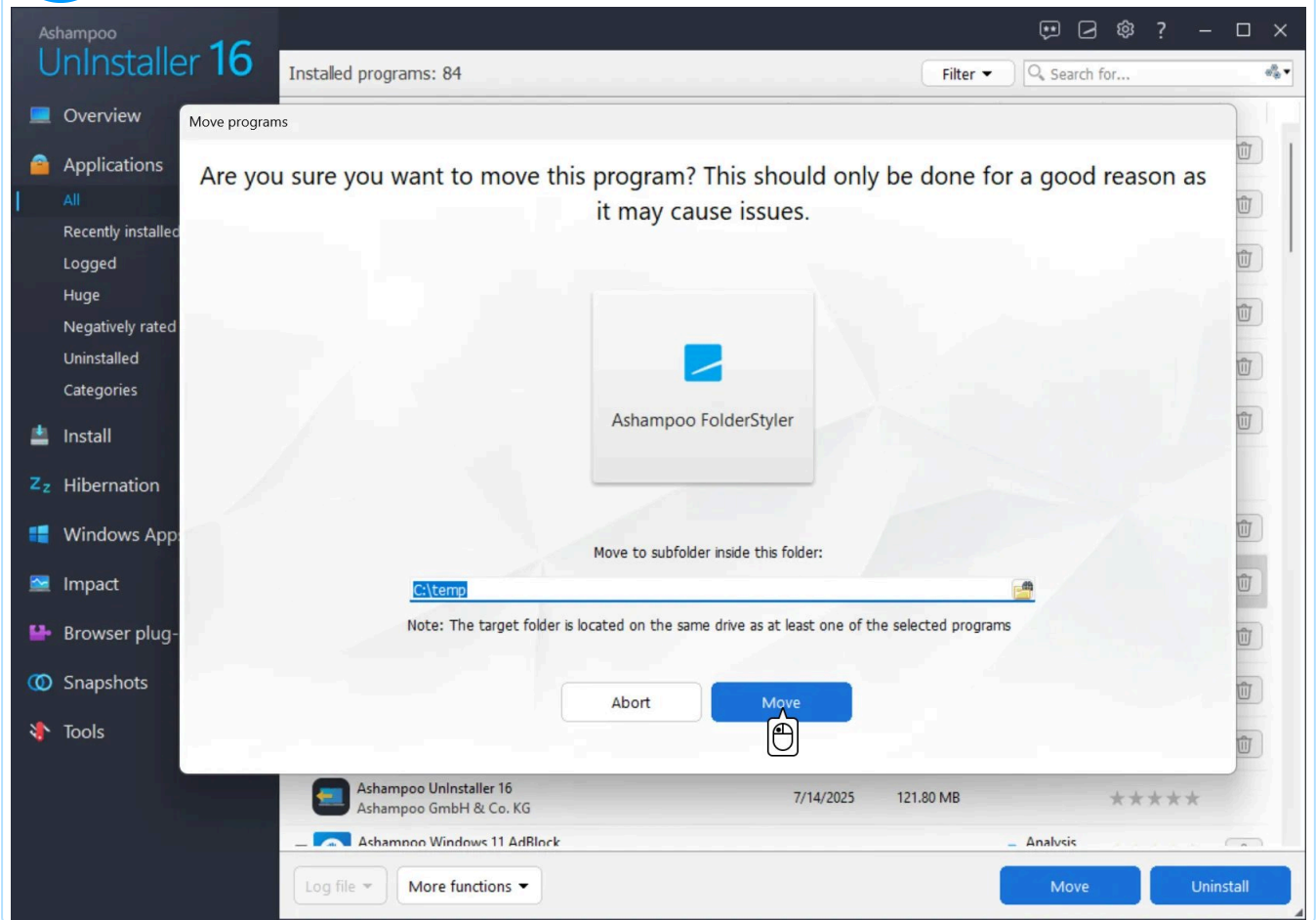
Move

Uninstall

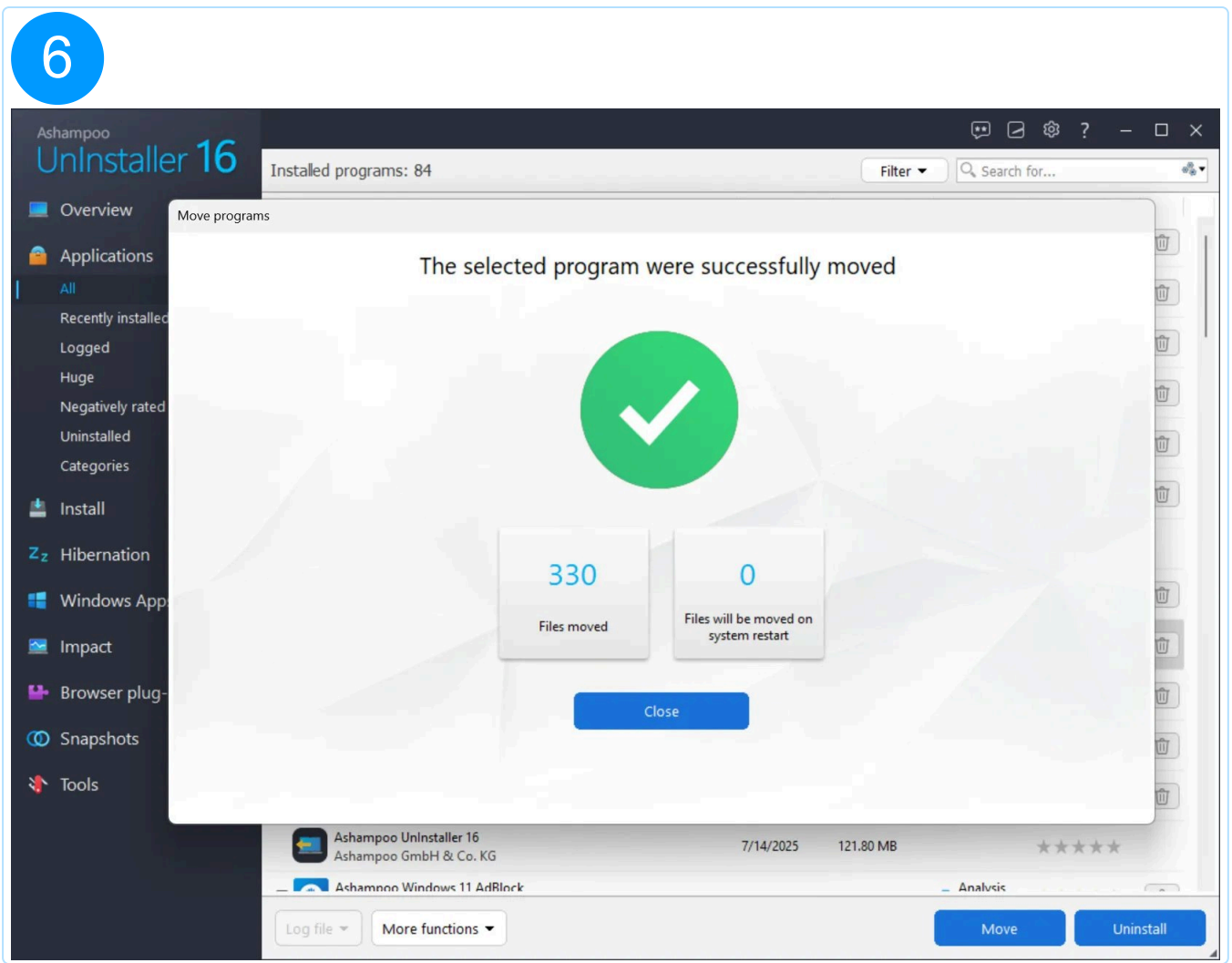




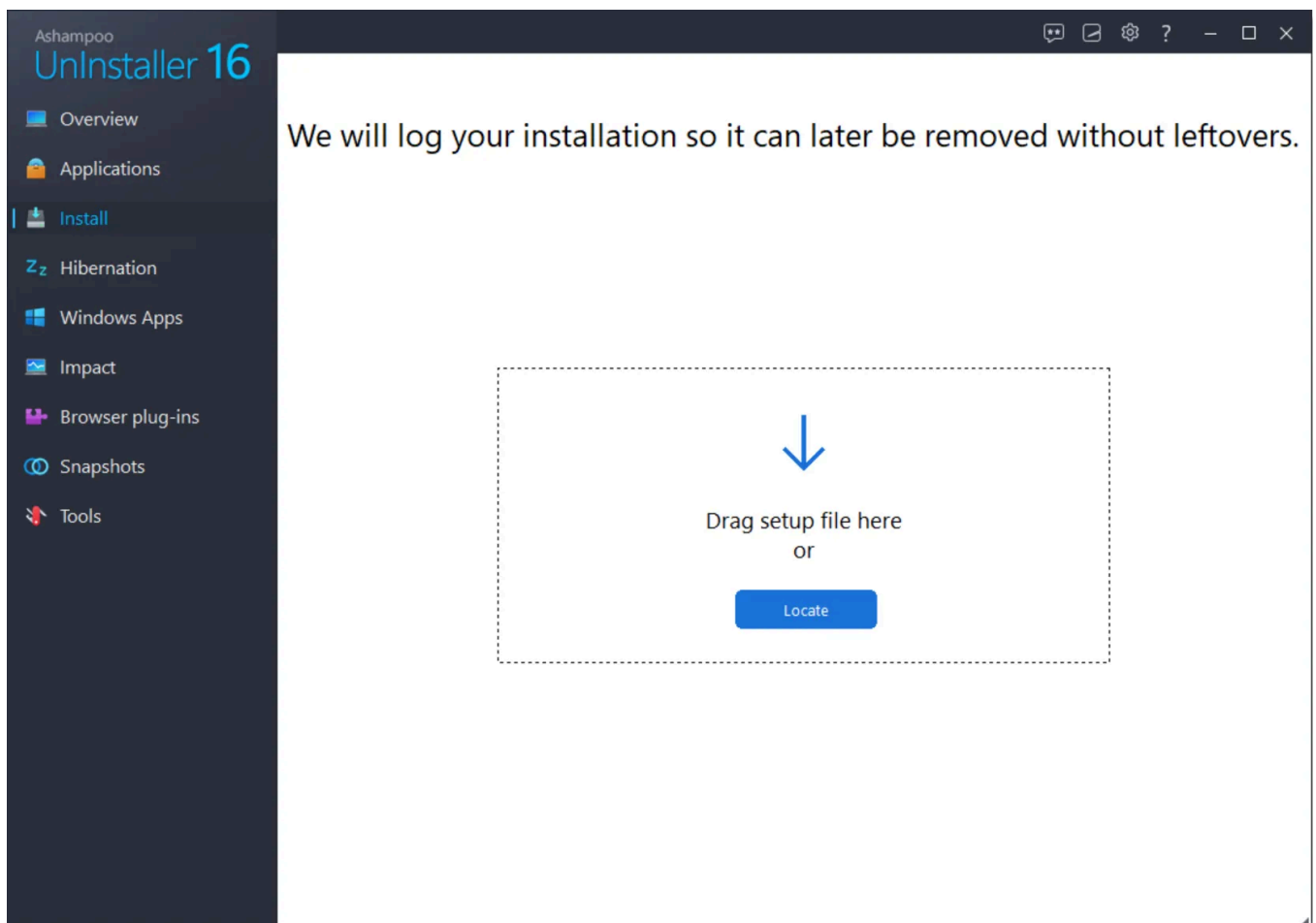




6



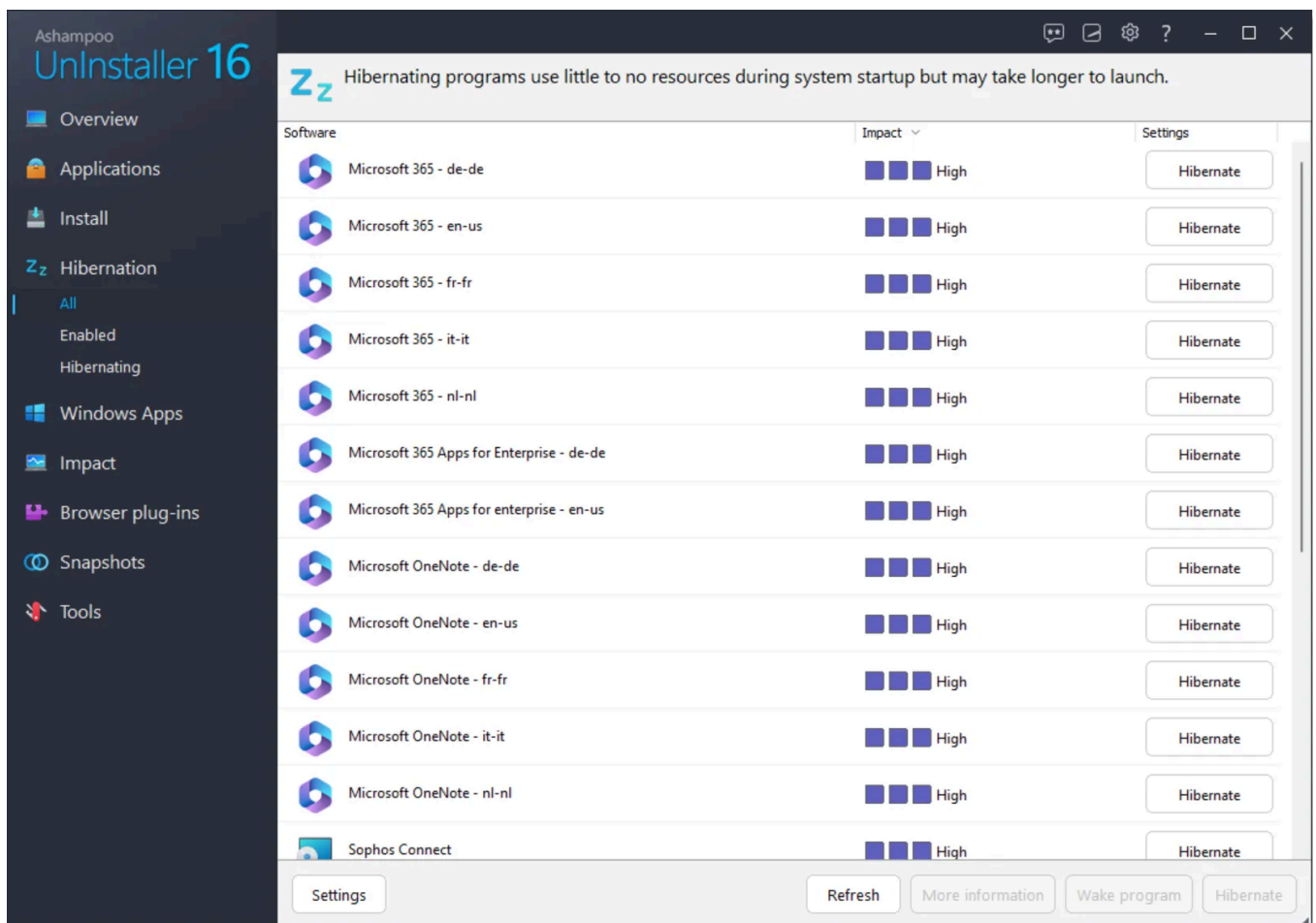
## 3. Install



In case auto-detection fails or if you'd rather trigger installation monitoring yourself, you can also drag the affected setup file into the area under "Install" or use the "Browse" button there to select it manually. If monitoring is enabled, you can also right-click the corresponding icon in the Windows notification area to access the context menu and use "" to manually trigger new installations. Alternatively, you can also left-click the icon.

During installations, you'll see a notification at the top of your screen. Simply follow the steps outlined by the affected setup. Usually, UnInstaller will detect the end of the installation automatically. In some cases, you may have to manually stop the logging process by clicking "Installation completed". You'll then see a brief summary of the changes made during the installation.

## 4. Hibernation

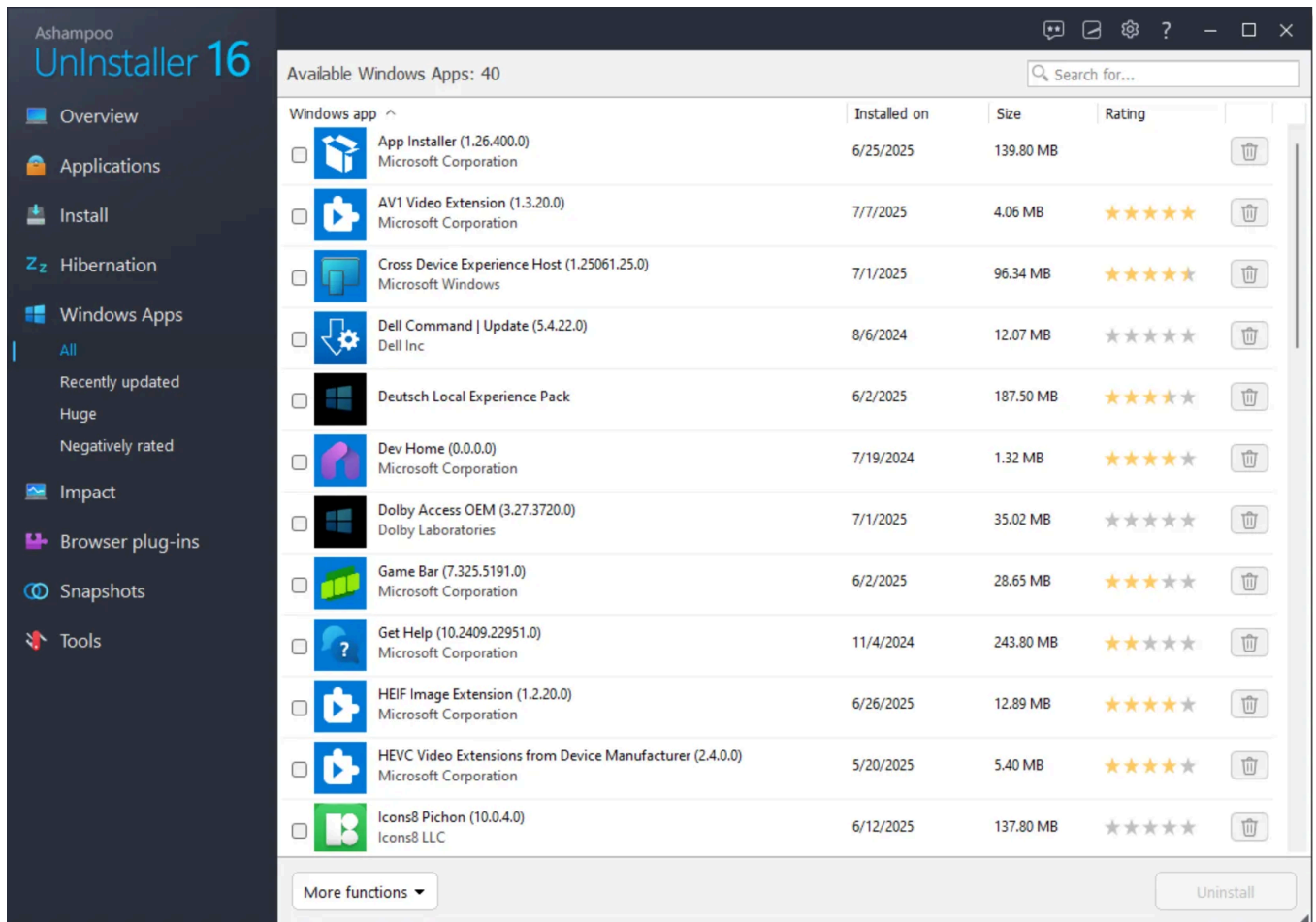


Hibernation allows you to put applications to sleep while also disabling all of their related Autostart entries and background services. It's a quick alternative to application removal that releases system resources while keeping applications available in case of need.

Click "Hibernate" to put individual applications to sleep and "Wake up" to re-enable them. You can also use the bottom buttons to achieve the same results.

Hibernating applications will wake up automatically when you launch them, so you usually don't have to wake up applications manually. If you uninstall Ashampoo UnInstaller 16, all hibernating applications will be woken up before Ashampoo UnInstaller 16 is removed.

## 5. Windows-Apps



This module list all installed Windows apps including system apps and allows you to remove them. Note that Windows-default apps can only be restored by reinstalling Windows.

## 5.1 More functions

## Uninstall

Removes the selected apps from your PC. System apps ("critical apps") can either be partially or completely removed. Partial removal results in the app no longer showing up in the list of apps while retaining the app archive.

## Rate online

You may rate the program on a scale from 1 to 5 stars here. Alternatively, you can also click the stars behind a list entry to use this feature.

## Search online

Performs an online search with the selected entry using your default browser.

## Open folder

Shows the folder containing the app in Windows Explorer.

## Refresh

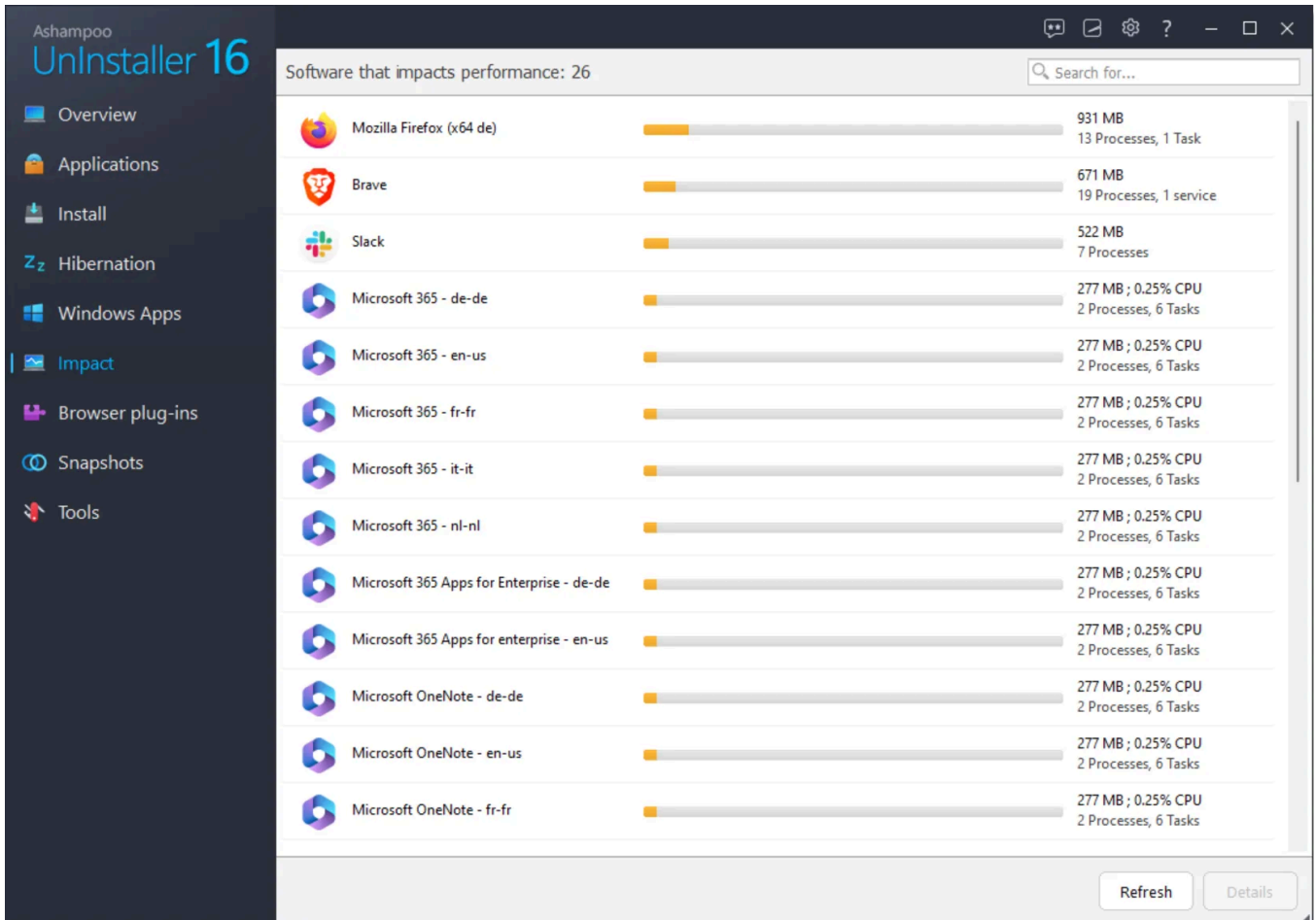
Reloads the list of installed apps.

## Reinstall all default Windows apps

Restores all partially uninstalled system apps.

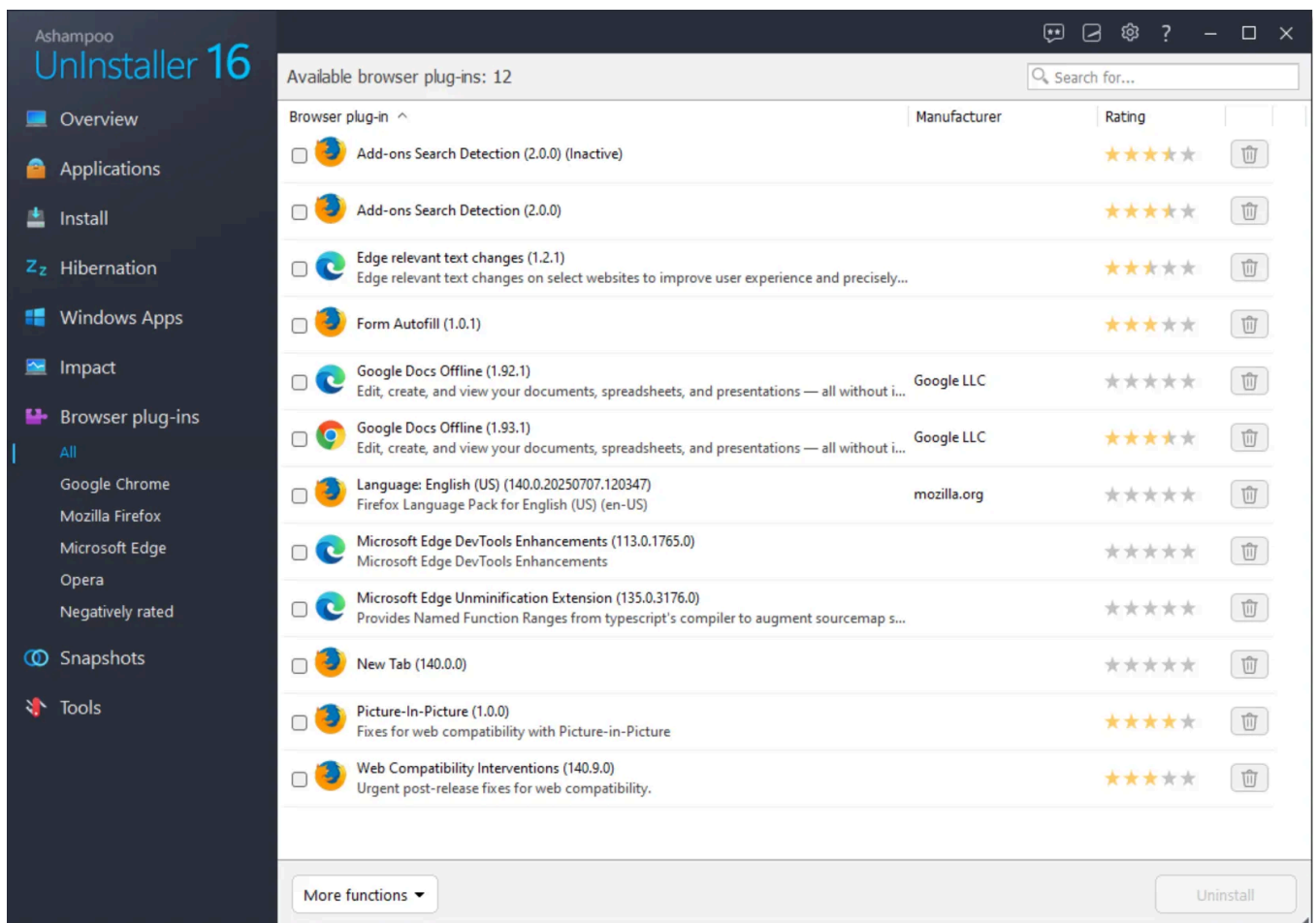


## 6. Impact



This section lists the programs that have the biggest impact on the performance of your PC. Several factors, e.g. CPU and memory load, are factored in to determine the order.

## 7. Browser plug-ins



This module lists all browser plugins for your installed browsers. Use the left categories to filter results by browser manufacturer or the text field to filter by individual terms.

Either click an entry to uninstall the affected plugin or use the check boxes to uninstall several applications in a row. Click "Uninstall" to remove the selected items from your PC.

## 7.1 More functions

## Uninstall

Removes the selected plugin from your PC. We recommend closing the affected browser before you proceed.

## Rate online

You may rate the plugin on a scale from 1 to 5 stars here. Alternatively, you can also click the stars behind a list entry to use this feature.

## Search online

Performs an online search with the selected entry using your default browser.

## Display file properties

Displays the Windows-default file properties for the selected plugin.

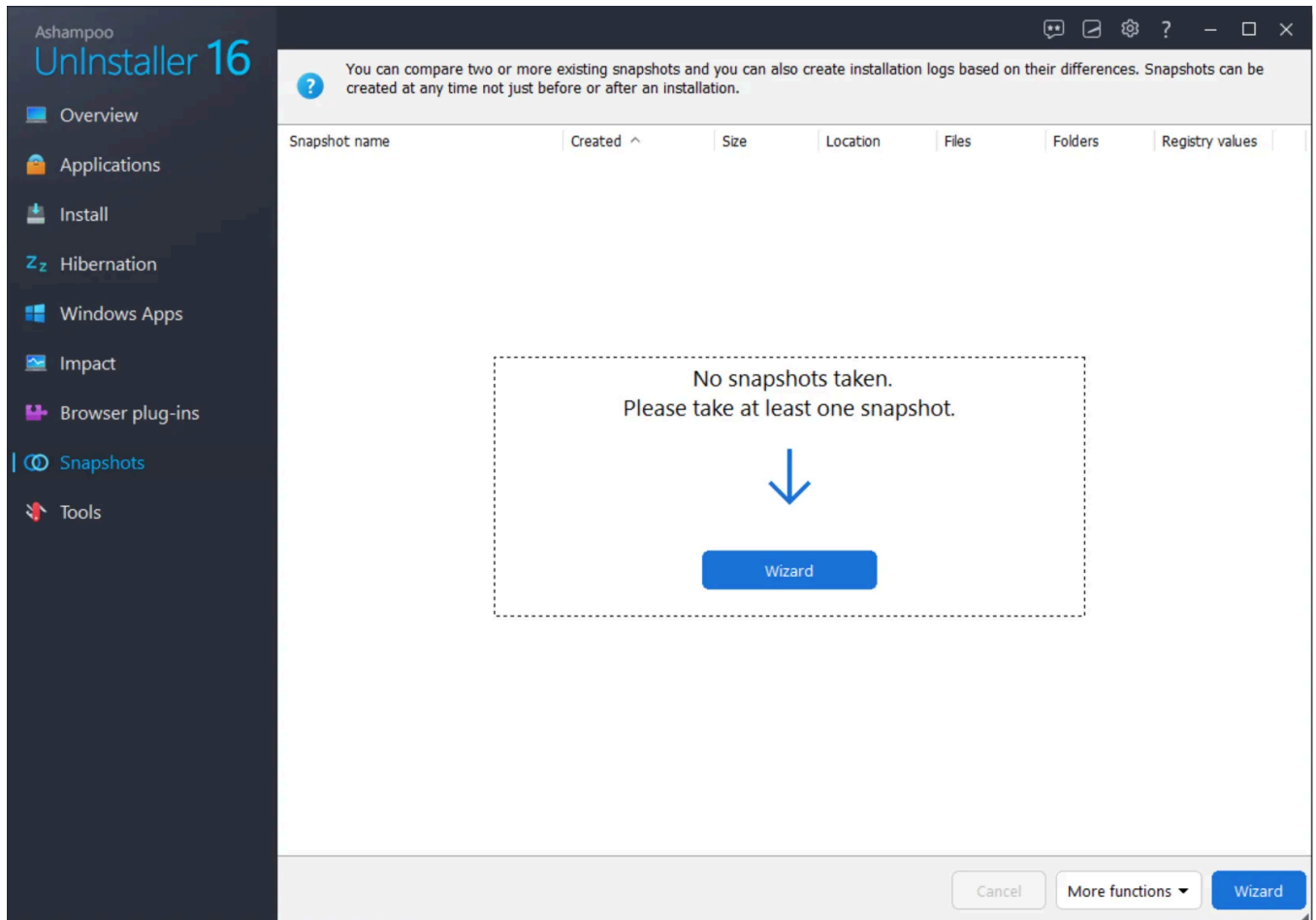
## Open folder

Shows the folder containing the plugin in Windows Explorer.

## Refresh

Reloads the list of installed plugins.

# 8. Snapshots



Snapshots document the current state of your PC system at the time of creation. By comparing two snapshots, you may effectively trace any modifications for the affected time period. This may help diagnose software and hardware issues.

## 8.1 More functions



## Refresh

Reloads the list of existing snapshots.

## Settings

Opens the program settings for this section.

## Open folder

Shows the folder containing the snapshots in Windows Explorer.

## Delete

Deletes the selected snapshots.

## Create new snapshot

Create a snapshot of the current system state using the name you provide.

## Create 2 snapshots now and show changes

Creates a snapshot of the current system state. You'll then be prompted to make the desired modification to your system and confirm the creation of the second snapshot afterwards. Once complete, the differences will be automatically visualized.

## Create installation log

Use this feature to create an installation log based on the differences between two

snapshots. Note that the first snapshot describes the system before the "installation" while the second includes the changes. The program will then scan for newly installed applications and present you with an overview.

You will then have to select changes to include in the log file, followed by a brief summary. Click "Continue" to create the log file.

## Compare this snapshot with

This feature allows you to compare two snapshots and visualize the changes, e.g. to find out what changes were made to your system during an installation. Simply select an existing snapshot and pick this feature, followed by the snapshot to compare against. Depending on the number of system modifications, this process can take a few seconds.

Results will be displayed in different categories. Click "Generate report" to save the currently visible results as a text file to your PC which will be automatically opened in your default text viewer afterwards.

## 8.2 Wizard

Please select a task and click on "Finish".



☒ Create a new snapshot now

Creates a new snapshot. A snapshot will capture your system in full detail right now. Two snapshots of two system states are compared across many functions.



☐ Create and compare 2 snapshots with wizard

If you want to log changes on your computer, this wizard will help you. It takes a snapshot, then waits until, for example, you have finished an installation, and then creates another screenshot. Through a comparison, it displays all changes in the system.



☐ Compare 2 existing snapshots

This function compares two snapshots, that is, two logged system states. A comparison shows all the changes that occurred between the creation of Snapshot 1 and Snapshot 2.



☐ Create installation log from 2 existing snapshots

An installation log shows any changes that have occurred due to software installations on a system. It compares the snapshots of two different system states.

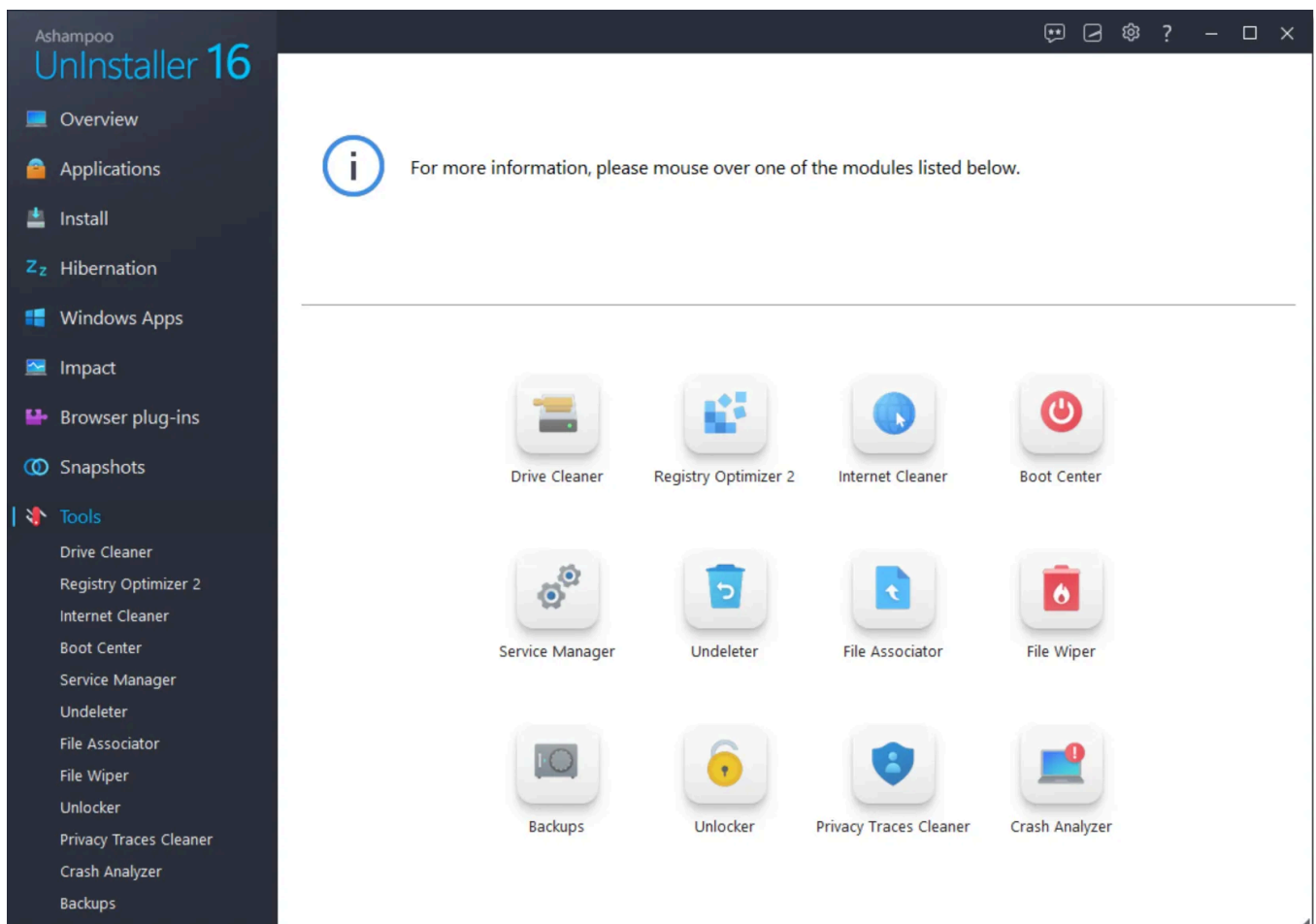
Cancel

Continue

The wizard greatly facilitates working with snapshots by providing a use-case based selection of jobs. Simply pick a job and follow the on-screen instructions. Created snapshots will be named automatically.

## 9. Tools





These tools help you clean your system, remove no longer needed and leftover files and to defragment your drives. Note that some modules that delete files and folders will always move them to the recycle bin first with the exception of File Wiper. This allows you to restore files/folders in the event of malfunctions. However, if you set your recycle bin to always delete files this will also affect these modules in UnInstaller.

Registry Optimizer always creates backup. Should you experience any issues once cleaning is finished you can always revert any changes through [Backups](#).

## 9.1 Drive Cleaner

Drive Cleaner scans your system for no longer needed files and displays results grouped by categories. Click the number of results to display details for each category.

Use the check boxes to select/deselect individual results or use the top buttons to select all/no results from a category. Click "Create report" to save your results as a text file..

## 9.2 Registry Optimizer

Registry Optimizer scans your Windows Registry database for no longer needed entries and displays results grouped by categories. Click the number of results to display details for each category. Use the check boxes to select/deselect individual results or use the top buttons to select all/no results from a category. Click "Write a report" to save your results as a text file. Right click a result to access the context menu. You may then specify the entry as an exception to exclude it from future searches. You can remove exceptions in the settings for this module.

## 9.3 Internet Cleaner

Internet Cleaner scans your system for no longer needed Internet-related files and displays results grouped by categories. Click the number of results to display details for each category.

### Safe cookies

Many websites use cookies to store important data, e.g. login credentials, and use them to automatically fill in the data on your next visit. Since Internet Cleaner deletes all cookies, you'll have to reenter the data manually for each affected site, unless you mark the affected cookies as "secure", excluding them from deletion.

Click "Manage safe cookies" button to whitelist existing cookies or manually input URLs.

## 9.4 Boot Center

### Overview

This page displays a summary for recorded boot times, autorun entries and tasks.

### Autorun

This module lists all applications that launch with Windows. Use the check boxes to enable/disable individual entries.

Red entries refer to missing files, e.g. after an incomplete program uninstallation. Select the entry and click "Edit" to review the file path. Run [Registry Optimizer](#) to remove invalid entries automatically.

## Reload

Updates the list of entries.

## Add/Edit

Allows you to add a program to the Windows startup sequence. Either a name and select the EXE file for the program or manually input a command line sequence.

## Delete

Deletes an entry from the Windows startup sequence.

## Enable/Disable

Allows you to enable/disable individual entries, e.g. to check the impact on your boot time prior to deletion.

## Tasks

Use the dropdown menu to filter the tasks by category.

## Reload

Updates the list of entries.

## Delete

Deletes the selected task.

## Enable/Disable

Allows you to enable/disable individual entries, e.g. to check the impact on your boot time prior to deletion.

# 9.5 Service Manager

Services are background programs required by Windows and other applications to work properly. This module lists all installed services and provides a rating on their usefulness. It also allows you to modify start types individually.

## Refresh

Updates the list.

## Download ratings

Use this button to retrieve current ratings in case you disabled auto-downloads.

## Details

Displays details such as service dependencies.

## Start

Starts a service.

## Stop

Stops a service.

## Start type

Allows you to modify the start type of a service:

### Deactivate

The service is permanently disabled. Use the ratings to ascertain whether a service is vital to the functioning of your system first.

### Manual

The service is inactive and started automatically as soon as it is needed.

### Automatic

The service will start with Windows.

### Automatic (delayed)

The service will start once Windows has finished loading to avoid slow downs.

## Rate online

Allows you to rate a service. Your rating will be shared with the community to make it available to other WinOptimizer users.

## 9.6 Undeleter

Undeleter attempts to recover accidentally deleted files. Simply select a drive and click "Search". Then, select the files to be recovered. Use the search text field to narrow down the list of results and click "Restore" to recover the selected files. Make sure to select a different drive than the source as destination to avoid data loss.

## 9.7 File Associator

File Associator allows you to associate file types with viewer/editor programs. File types that are currently unassociated are marked red. Click an entry to select it or hold down Shift to select multiple entries starting with the first selected entry or Ctrl to select multiple entries individually.

### Settings

Opens the module settings.

### Refresh

Updates the list of available file types.

### Apply changes

Applies your modifications.

## Undo changes

Restores the original program association for the selected file types.

## Edit

You can select the icon to be used on the Desktop and Windows Explorer and the viewer/editor for the selected file type here.

## Delete

Deletes the selected file type from your system.

# 9.8 File Wiper

When Windows deletes a file, the affected disk space is marked as reusable. As long as it isn't used for new data, the original data is still there and can be recovered easily. FileWiper overwrites these areas with data such as zeros so the data can no longer be recovered.

## Settings

Opens the module settings.

## Add

## Folder

Adds a folder to the list that will be permanently erased.

## File(s)

Adds one or more files to the list that will be permanently erased.

## Trashcan contents

Adds the contents of the recycle bin to the list.

## Free disk space

Overwrites free disk space on the selected drive to render previously deleted files/folder unrecoverable.

## Clear list

Deletes all entries from the list.

## Remove from list

Deletes the currently selected entry from the list.

## Abort

Cancels the current operation.

## Wipe data

Overwrites the selected areas permanently.



## 9.9 Unlocker

This module allows you to unlock files that are currently locked/used by Windows, e.g. to delete them. Note that deleting system-critical files may lead to crashes and instabilities.

## 9.10 PrivacyTraces Cleaner

This module find and eliminates data that poses a potential threat to your privacy. Enable "Search for and clear jumplists" under "Settings" to also delete the list of recently opened files/websites that is displayed when you right-click an application in the task bar.

### Refresh

Updates the list of locked files.

### Add selection

Adds the selection in the top panel to the list of objects to be unlocked.

### Objects to unlock

This menu allows you to manually select files/folders or input an object path. You can also delete individual or all entries from the list of objects to unlock.

### Unlock

You can unlock the selected entries and decide what to do with them afterwards here.

Depending on the file/object, it may be necessary to restart Windows Explorer or, in case

of DLLs, unregister the file. The affected process (application) may also have to be terminated. You can make these settings here.

## 9.11 Crash Analyzer

Use this feature to review crash reports for your installed applications. By default, reports are grouped by program name. Use the filter button at the top to adjust the display settings. In group view mode, click the arrow buttons next to the entries to expand them. Double-click a report to open it.

## 9.12 Backups

Use this module to undo changes made by WinOptimizer, e.g. through Registry Optimizer, should the changes have lead to undesired system behavior.

### Delete old backups

Deletes backups that are older than 7, 14 or 30 days. Click the arrow to select a time interval.

### Refresh

Updates the list of available backups.

### Show backup folder

Opens the backup folder in Windows Explorer.

### Restore

Restores the changes of the selected backup.

## Delete

Deletes the selected backup from your system.

## Switch view

Toggles between a quick overview and a detailed list of your backups.

# | 10. Settings

## Basic functions

Use these settings to select a different program language or look.

## UnInstaller

Select whether system components like graphics drivers should be listed under "Applications".

## Installation guard

These settings allow you to determine how the program identifies setups and which file

properties will be used for detection.

## Snapshots

Select drives to be included in the creation of snapshots here and specify folders that will generally be excluded.

## Drive Cleaner

Select what information Drive Cleaner should delete and which drives should be scanned. You may also select files/folders to be excluded from scans.

## Registry Optimizer

Select which elements to include in scans and whether only local drives should be scanned, e.g. to keep shortcuts to network drives that are currently disconnected. You can also remove exceptions you created using the context menu in Registry Optimizer here.

## Internet Cleaner

Select the file types to be deleted for each browser and adjust the list of secure cookies here.

## File Associator

These settings affect the formats that will be listed for each filter category. To include a file type, simply add its extension, e.g. ".bak", to the desired category. Use commas to separate multiple formats.

# Undeleter

These settings influence the presentation of search results and the handling of folder structures during file restoration.

## File Wiper

To render files irrecoverable, they have to be overwritten multiple times as specified by each deletion method.